

CZECHOSLOVAK INDUSTRIAL EXHIBITION OLYMPIA LONDON 16-28 JULY 1962

MODERN CZECHOSLOVAK ART

1916

The Directors of Sevenarts Limited are happy to have had the opportunity of co-operating with the Czechoslovak Ministry of Trade in presenting at Olympia an exhibition of contemporary Czech art which supplements the exhibition of work by two leading Czech painters, Karel Soucek and Ota Janecek, in the Seven Arts Gallery at 30 Old Bond Street.

As Dr Sindelar points out in his Introduction to the present catalogue, the exhibition is not intended to be an exhaustive review of contemporary Czech art, but the Directors of Sevenarts had this objective in mind when visiting Prague, and the facilities which were so readily afforded them for examining the work of artists of many different schools lead them to hope that, in the not too distant future, they will be able to present a full account of present day trends.

Ret 5996

~~Sindelar~~

7 Young Artists

Soucek / Janecek / ...  
~~Vlastislav~~ Kolar  
 Muzina - Milan Jelinek  
 Svedera  
 Hungarian  
 Kurfur / Slener  
 Danec Yugoslavia  
 Todorovic  
 de Ploebus  
 Tutenauer

# Introduction

This exhibition is not, nor indeed can it be, an exhaustive review of contemporary Czech art. What it does do is to present the work of several artists, some belonging to the older and others to the younger generation, artists who are typical of present-day art trends being here exhibited.

The well-informed visitor will naturally miss the work of a number of outstanding painters, especially that of the recently deceased Frantisek Tichy. The organisers hope that this gap will soon be filled in one of the forthcoming exhibitions.

Already before the war, foreign critics—in particular Elie Faure—found Czech art remarkably international, and yet at the same time possessing a strong specifically national accent. This individual quality they considered to consist of a certain elusive melodiousness, a touching emotiveness, a concentration of thought, and even partly a meditative trend. The poetisation of reality by means of warm emotion and careful thought—that is probably one of the features which the foreign spectator finds most striking about Czech art. Spala and Kremlicka drew attention by their being so typically Czech, yet highly contemporary and modern.

This note is not absent from present-day Czech art, either. It may even be said that it has now been given a novel tune. The pictures collected here show beyond doubt that their authors have a good knowledge of world art trends. Nothing positive, no new discovery pointing the way to the future, escapes them. They do not, however, seek these positive features solely in formal aspects, applying more universal criteria—the criteria of the development of the human spirit and life in general.

This is also responsible for the ever-present human touch, common to all the authors, some of whom express it in their very

subject-matter. Their efforts are not aimed at creating an autonomous world which the spectator would enter, depositing his baggage of worldly joys and cares on the threshold. Their pictures are, on the contrary, painted to give expression to everyday life, to add something of their own to it, something positive, to sharpen our perception and clarify both our emotions and our thought.

We shall find among them very different personalities, with unique temperaments and ways of thought: the dramatic personality of Broz, the incisively witty personality of Hoffmeister, the poetical and sarcastic personality of Sklenar. We shall find a variety of themes, dictated by the painter's predilections—whether it be the intimate life of the family, the rhythm of city life, the means of civilisation, and so on. We shall also find a wealth of expressive means which we can compare to the chief trends in contemporary world art.

What we shall, however, find first and foremost is a common denominator of viewpoint, a basic national kinship which alone justifies a claim to the visitor's attention.

And it is with this short introduction that we do so

Dr Dušan Šindelář

## Vlastimil Beněš

Painter, graphic artist, sculptor. He is self-taught and was born in Prague October 3rd, 1919. He is a member of the group of artists 'MAY 57' and first exhibited his work in 1947 at the Hollar Society of Czechoslovak artists in Prague; and since 1956 his work has been exhibited at various Prague salons. He exhibited with the May group in Prague 1957, 1958; 'The City as Seen by Contemporary Painters', Prague 1958; and the Fourth Survey of Czechoslovak Fine Art, 1959/60 etc. One-man shows: D34 Theatre, Prague 1956; Gallery of Czechoslovak Writers, Prague, May 1958.

## Zdeněk Mičoch

Painter and illustrator, art editor of the State Publishing House of Children's Books in Prague since 1951. Born November 18th, 1921, in Nová Dedina in Moravia, he attended the School of Applied Arts in Brno 1940-41 and the Academy of Applied Arts, Prague, 1942-43. In 1945 he returned to his studies under Professor K. Svoboda, becoming his assistant after graduating in 1950. In 1959 he exhibited in Prague with Skala, Rotrekl and Foll at the Gallery of the Czechoslovak Association of Writers; in 1961 with the 'Radar' Group; and he had a one-man show in Prague in 1960.

## Jiří John

Painter, graphic artist and illustrator. Born November 6th, 1923 in Trest. In 1945-46 he studied at the State School of Graphic Art in Prague, under Professor Z. Balas and from 1946 to 1951 at the Academy of Applied Arts in Prague under Professor J. Kaplický. His work includes the murals for the Prague Airport terminal, and the design for the Memorial to Jewish victims of Nazism in Prague, at the Pinkas Synagogue. He has exhibited with the Association of Czechoslovak Fine Art in the Umelecká Beseda since 1951; the 'Realization Exhibition', Prague, 1961 and with the 'ub 12', Group, Prague 1962; and he had a one-man show at the Ales Gallery of the Umelecká Beseda 1960.

## Vladimir Sychra

Painter and illustrator, State Prize Laureate 1957, Professor at the Academy of Fine Arts, Prague. Born January 1st, 1903, in Prague and studied under Professor E. Dite at the Academy of Applied Arts, Prague, 1921-23, and under Professor M. Svabinsky at the Academy of Fine Arts, 1923-27.

He designed the bronze doors and interior of the main hall of Charles' University, Prague; eight large mosaics in the Red Army Hall of the National Liberation Memorial at Vítkov, Prague; and a window for the Czechoslovak exhibit at the Brussels Exhibition 1958. He is a member of the Mánes Society with whom he exhibits, and he has shown with the Association of Czechoslovak Fine Art at home and abroad; in Surveys of Czechoslovak Fine Art; Ten Years of Fine Art in Czechoslovakia 1955; Art Competition on the 15th Anniversary of the Czechoslovak Socialist Republic 1960; the 'Still Life' Exhibition. He had a one-man show in Prague 1957.

## Antonín Pelc

Painter, draughtsman, illustrator and caricaturist. Professor at the Academy of Fine Arts, Prague. Awarded the Order of Labour 1955; the State Prize 1951; and the title Meritorious Artist 1960; and Laureate of the Czechoslovak Peace Prize.

Born January 16th, 1895, in Lisany near Rakovník. He studied at the Academy of Fine Arts under Professors Pirner and Bukovac, graduating in 1916. From 1920 he contributed caricatures to various journals at home and abroad, including the Soviet 'Krokodil'. In 1946 he was appointed Professor of Caricature at the Academy of Applied Arts, Prague, and since 1954 has been in charge of the department of painting at the Academy of Fine Arts.

He designs posters and illustrates books, including 'Penguin Island' by A. France; 'The Rebel' by J. Valles; 'Grapes of Wrath' by J. Steinbeck; 'The Inheritance' by Guy de Maupassant, etc.

His work was shown before 1939 at the Mánes Gallery; and during the war years in the U.S.A. He has exhibited in England with Adolf Hoffmeister; and since 1946 in many exhibitions of the Association of Czechoslovak

Fine Art; Exhibition of Book Illustration, Berlin, 1961; Exhibition of Czechoslovak Art held in the USSR; One-man show Prague, 1950, and another planned for 1962.

## Richard Weisner

Painter and illustrator. Meritorious Artist 1960. He was born July 6th, 1900, in Ruda in Moravia, and from 1920-1929 he studied painting under Professors Obrovsky and V. Nechleba at the Academy of Fine Arts, Prague. Following his graduation he went to Paris to study for two years. He has worked in Prague ever since; and in 1953 he won First Prize for painting in a competition at the V. I. Lenin Museum, Prague. In 1954 he completed the large mural in the main hall of the new railway station Prague-Smíchov.

He has exhibited his work with the Mánes Society and since 1945 he has taken part in exhibitions of the Association of Czechoslovak Fine Art; Surveys of Czechoslovak Fine Art; Ten Years of Fine Art in Czechoslovakia 1955; and the Art Competition on the 15th Anniversary of the Czechoslovak Socialist Republic 1960. In 1957 he had a one-man show in Prague.

## Josef Jíra

Painter and illustrator. Born October 11th, 1929, in Turnov, and studied at the Academy of Fine Arts, Prague, 1947-51, under Professors Miloslav Holy and Vlastimil Rada. During the past five years his work has been shown at exhibitions held at the Gallery of Young Artists, Prague; the Exhibition of Young Artists, Brno, 1958; and in Prague with the 'May 57' Group, 1958, 1960, 1962. One-man show Prague, 1957; his work was represented in the Biennale of Young Artists, Paris, 1961, and in the exhibitions held during Festivals of World Youth in Moscow and Vienna.

## Zdeněk Sklenář

Painter, graphic artist and illustrator. He was born April 14th, 1910, in Lestíná u Zábřeha in Moravia, and studied at the Academy of Applied Arts in Prague from 1929 under Professors A. Hofbauer and Z. Kratochvíl. Until 1954 he was assistant to Professor

F. Muzika at the Academy of Applied Arts.

He has designed a number of posters and has worked for numerous Czechoslovak publishing houses, specialising in book typography. His work has been shown by the Mánes Society of Artists; Exhibition of Paintings by Czechoslovak artists on their Travels in France, Prague 1947; Artists and Books, Prague 1954; Ten Years of Fine Art in Czechoslovakia 1955; Art Competition on the 15th anniversary of the Czechoslovak Socialist Republic 1960; 'Reckoning' 1958; Exhibition of work by Czech artists on their travels in Chinese People's Republic; 'Spring 1962'; and abroad.

## Kamil Lhoták

Painter, graphic artist and illustrator. He is a self-taught artist, born July 25th, 1912, in Prague where he studied law. Since the 1930's he has exhibited his work with the Umelecká Beseda and during the war he was a member of the '1942 Group'. He has exhibited with 'Confrontation II' Prague-Topic Salon; and one-man shows in 1946, 1948, 1949, 1955, 1957 and 1962 in Prague; with the Hollar Society of Graphic Artists, and at exhibitions of the Association of Czechoslovak Fine Art; 'Ten Years of Fine Art in Czechoslovakia', 1955. He took part in the Art Competition on the 15th Anniversary of the Czechoslovak Socialist Republic, 1960 and in Paris, Brussels, Lieges, Antwerp, Copenhagen, Göteborg, Oslo, Stockholm, Warsaw, etc. He has made important contributions to cartoon films, 'Atom at the Crossroads', 'How Man Learned to Fly', 'The Airship and Love', etc.

## Josef Brož

Painter and illustrator; State Prize Laureate 1962. Born August 13th, 1894, in Krásno nad Bečvou. He studied at the Academy of Applied Arts in Prague 1927-34 under Professor A. Hofbauer and in Paris, 1934-35, under Professor Kupka. Exhibitions include The Mánes Society of Artists; Surveys of Czechoslovak Fine Art, Prague; Ten Years of Fine Art in Czechoslovakia, 1955. He took part in the Competition on the 15th Anniversary of the Czechoslovak Socialist Republic, 1960; and his work is included in the '58' Group' Exhibition 'Spring 1962'. His last one-man show was in Prague 1961.

## Karel Souček

Painter and graphic artist, professor of the Fine Arts Academy in Prague. Born 26th September, 1915, at Krocehlavy, lives in Kladno.

Since 1938 has given one-man shows in Prague, Brno, and Kladno, as well as taking part in member exhibitions of various art societies and groups in Czechoslovakia. High acclaim has been won by his murals for Prague Castle, the Prague National Theatre, and the railway station in Pardubice.

In 1946 took part in an exhibition of drawings and graphics organised by UNESCO in Switzerland, Britain, and in Paris. In the years 1959 and 1962 exhibited his paintings in Moscow. In 1960 took part in the Biennale in Venice. Awarded silver medal at 1959 Biennale in Sao Paulo, gold medal at World Exhibition in Brussels in 1958. National prize for his painting *The Town* shown at an exhibition sponsored by UNESCO in the Solomon R. Guggenheim museum in New York in 1961.

Is a member of the Czechoslovak Union of Artists and chairman of the *October* group of artists.

## Ota Janeček

Born August 15th, 1919, has already taken part in numerous exhibitions in Czechoslovakia and abroad. Besides such exhibitions as Art tchéoslovaque in Paris, Brussels, Lièges and Antwerp in 1946 and Czechoslovak Art in Moscow in 1953, these include Salon de Mai in Paris 1949. He has also exhibited drawings in Rio de Janeiro, Sao Paulo, Porto Alegre, Rio Grande, Bello Horizonte, and graphic art, e.g. Czechoslovak Graphic Art in Vienna 1952, International Exhibition of Colour Wood-cuts in Copenhagen, Göteborg, Amsterdam, San Francisco, Washington, Canada, etc. and posters International Exhibition of Posters in Vienna 1948. He has illustrated 40 books. Exhibited at exhibition of Czechoslovak Book Illustrations at Peking 1957, Illustration of Children's Books, Swansea, and many others. He has designed patterns for textiles and jewellery. He has contributed his artistic talents to the Czechoslovak film industry in such films as 'Wolves' Den', 'Awakening', etc. and has created several designs for Czechoslovak postage stamps.

## Ludmila Jiřincová

Painter, graphic artist and illustrator. She also designs jewellery, textiles and porcelain. Born Prague, 9th May, 1912, she studied at Rudolf Vejrych's school of painting from 1924-1934. In 1935 she attended the State School of Ceramics in Prague and 1935-1939 she studied at the Academy of Fine Arts under Professor T. F. Simon.

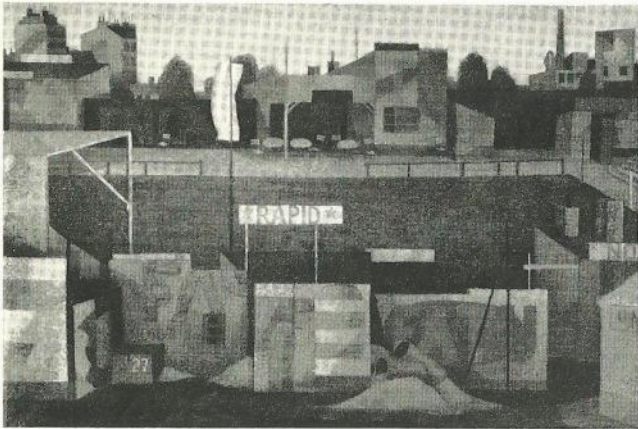
She is a member of the Czechoslovak Hollar Society of Graphic Artists and has exhibited with them regularly since 1931 both in Czechoslovakia and abroad. Her first one-man show was held in Prague 1940 and has been followed by further exhibitions. Her work has also been included in exhibitions of Czechoslovak graphic art held in Moscow, Warsaw, Stockholm, Göteborg, London, etc. She has studied in France, Italy, Switzerland, Yugoslavia, Bulgaria, Germany, Hungary, Austria, Turkey and other countries.

## Adolf Hoffmeister

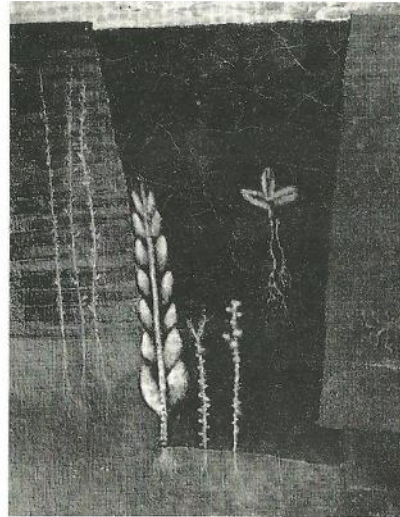
Painter, draughtsman, caricaturist, illustrator and writer. Professor at the Academy of Applied Arts, Prague. Awarded the Order of the Republic, 1960. Born August 15th, 1902, in Prague. He studied law and received his LL.D. He is a self-taught artist and since the 1920's he has contributed his caricatures to various journals in Czechoslovakia and abroad, and his work has been shown at the Mánes Society of Artists.

At the end of World War II he returned to Czechoslovakia where he worked as Departmental Head at the Ministry of Culture whence he departed for France, where he held the post of Czechoslovak Ambassador for several years. On his return he was appointed Professor of Caricature and Cartoon Films at the Academy of Applied Arts, Prague.

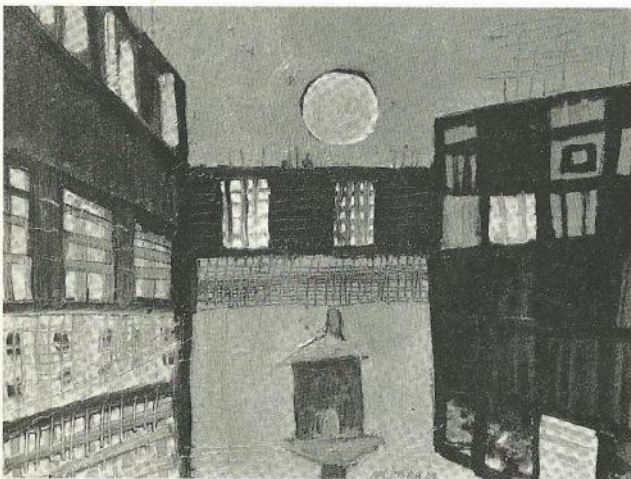
His caricatures, illustrations, collages and other works have been shown in Czechoslovakia and abroad.



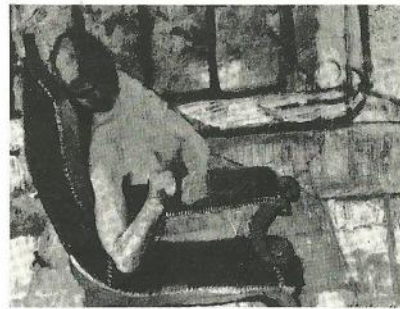
**Vlastimil Benes** Green Playground Oil 100" x 147"



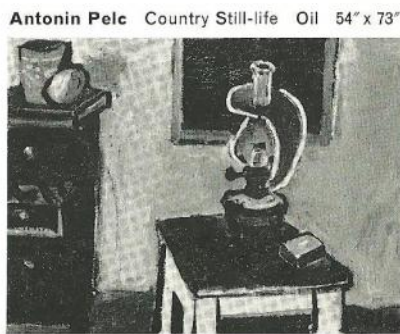
**Jira John** Budding 2 Oil 67" x 40"



**Zdenek Mlcoch** Town 1 Oil 25" x 32"



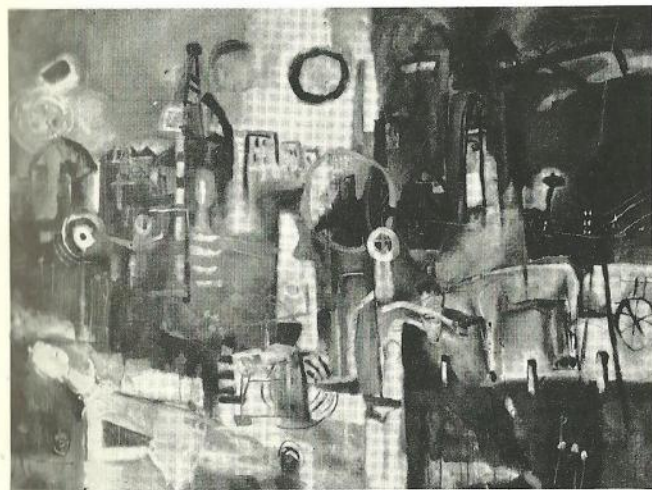
**Vladimir Sychra** Seated Girl Oil 65" x 81"



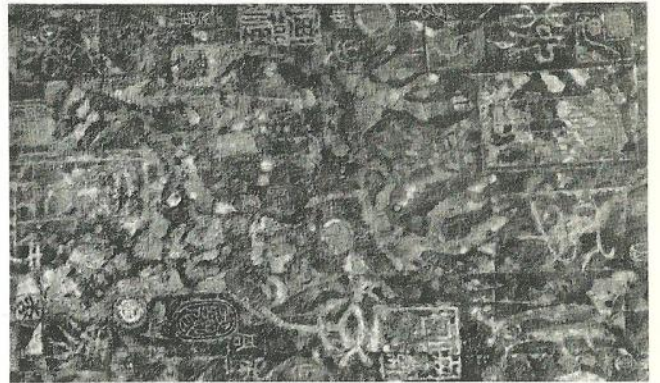
**Antonin Pelc** Country Still-life Oil 54" x 73"



**Richard Weisner** Night and Day  
Oil tempera 190" x 145"

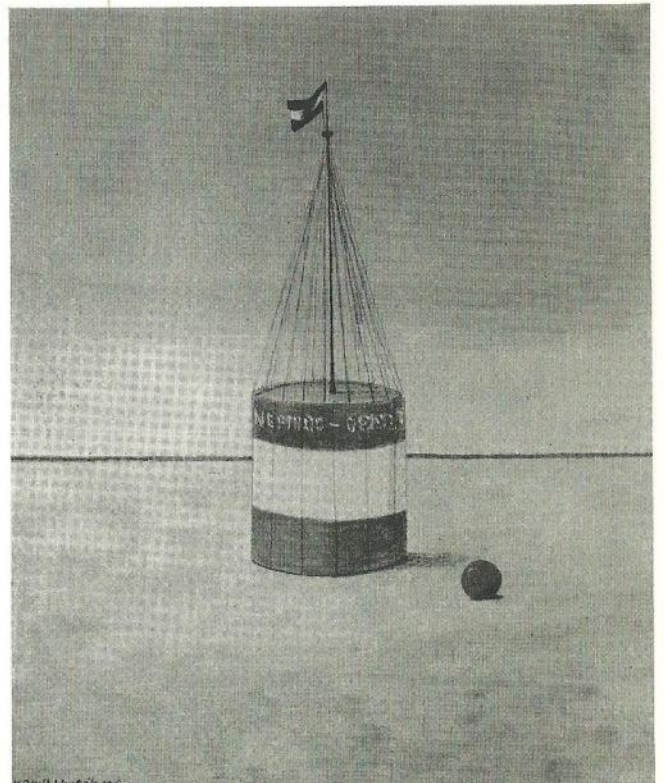


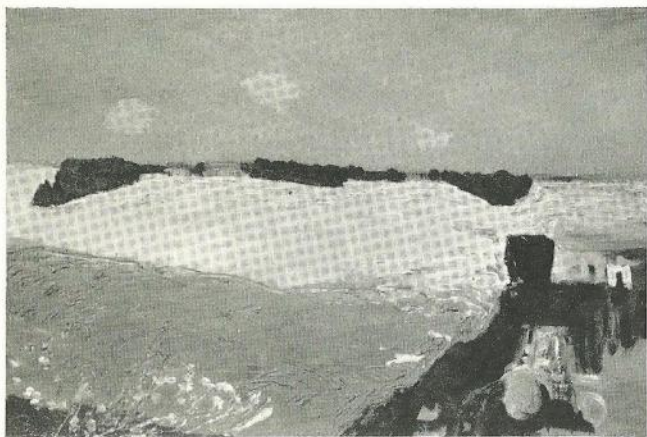
**Josef Jira** Town 2 Oil 80" x 100"



**Zdenek Sklenar** Chinese Calligraphy Oil 90" x 55"

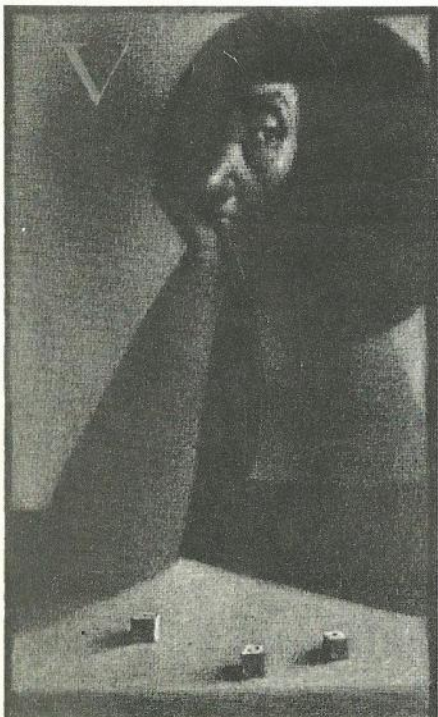
**Kamil Lhotak** Water Toy 1 Gouache 26" x 24"





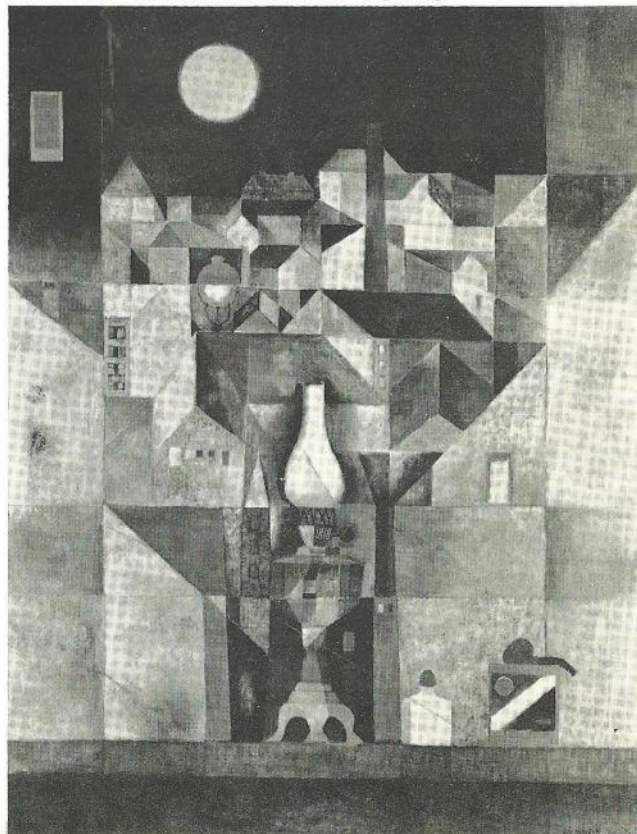
**Josef Broz** Corn fields Oil 78" x 114"

**Ludmila Jirincova** Magician Line Engraving 12" x 10"



**Karel Soucek** Blue Passage oil 41 $\frac{1}{8}$ " x 41 $\frac{1}{8}$ "

**Ota Janecek** View from the Atelier oil 51 $\frac{1}{8}$ " x 38 $\frac{1}{8}$ "





## Vlastimil Beneš

|    |                      |                    |             |
|----|----------------------|--------------------|-------------|
| 1  | Red Playground       | Oil                | 97" x 130"  |
| 2  | Green Playground     | Oil                | 100" x 147" |
| 3  | White Roofs          | Oil                | 77" x 107"  |
| 4  | Playground in Winter | Oil                | 97" x 130"  |
| 5  | Crane 1              | Tempera on plaster | 34½" x 24½" |
| 6  | Crane 2              | Tempera on plaster | 35" x 26½"  |
| 7  | Crane 3              | Tempera on plaster | 32½" x 25"  |
| 8  | Wooden Tower 1       | Tempera on plaster | 33½" x 25½" |
| 9  | Wooden Tower 2       | Tempera on plaster | 24½" x 25½" |
| 10 | Wooden Tower 3       | Tempera on plaster | 32½" x 25"  |

## Zdeněk Mlčoch

|    |                        |     |            |
|----|------------------------|-----|------------|
| 11 | Radar                  | Oil | 23" x 33"  |
| 12 | Prohibited Drive       | Oil | 42" x 57"  |
| 13 | Town 1                 | Oil | 25" x 32"  |
| 14 | Tramway Depot at Night | Oil | 33" x 36"  |
| 15 | Town 2                 | Oil | 82" x 96"  |
| 16 | Radar over the Town    | Oil | 71" x 100" |

## Jiří John

|    |                  |     |             |
|----|------------------|-----|-------------|
| 17 | Laboratory       | Oil | 100" x 110" |
| 18 | Budding 1        | Oil | 97" x 74"   |
| 19 | Laboratory Table | Oil | 67" x 87"   |
| 20 | Budding 2        | Oil | 67" x 40"   |

## Vladimir Sychra

|    |             |     |           |
|----|-------------|-----|-----------|
| 21 | Seated girl | Oil | 65" x 81" |
| 22 | Still-life  | Oil | 50" x 60" |

|    |               |     |           |
|----|---------------|-----|-----------|
| 23 | Portrait      | Oil | 60" x 50" |
| 24 | Black Veil    | Oil | 60" x 50" |
| 25 | In the Studio | Oil | 81" x 65" |

## Antonín Pelc

|    |                    |     |            |
|----|--------------------|-----|------------|
| 26 | Musical Still-life | Oil | 83" x 100" |
| 27 | Studio             | Oil | 81" x 100" |
| 28 | Arabian Girl       | Oil | 58" x 77"  |
| 29 | Merry-go-round     | Oil | 77" x 118" |
| 30 | Country Still-life | Oil | 54" x 73"  |

## Richard Weisner

|    |                           |             |             |
|----|---------------------------|-------------|-------------|
| 31 | Girl in front of a mirror | Oil tempera | 125" x 100" |
| 32 | Still-life on a table     | Oil tempera | 81" x 100"  |
| 33 | In memoriam Lidice        | Oil tempera | 61" x 50"   |
| 34 | Music in Studio           | Oil tempera | 145" x 200" |
| 35 | Night and Day             | Oil tempera | 190" x 145" |

## Josef Jíra

|    |                     |     |             |
|----|---------------------|-----|-------------|
| 36 | Glass Region        | Oil | 75" x 100"  |
| 37 | Easter-reminiscence | Oil | 88" x 117"  |
| 38 | Landscape           | Oil | 64" x 80"   |
| 39 | Town 2              | Oil | 80" x 100"  |
| 40 | Town 1              | Oil | 119" x 150" |

## Zdeněk Sklenář

|    |                   |     |           |
|----|-------------------|-----|-----------|
| 41 | Embroidery        | Oil | 98" x 61" |
| 42 | Chinese Pavilions | Oil | 59" x 50" |

|    |                     |     |           |
|----|---------------------|-----|-----------|
| 43 | Chinese Peacocks    | Oil | 50" x 40" |
| 44 | Chinese Calligraphy | Oil | 90" x 55" |
| 45 | Chinese Tortoise    | Oil | 40" x 30" |

### Kamil Lhoták

|    |                             |             |           |
|----|-----------------------------|-------------|-----------|
| 46 | Motorcycles                 | Tempera     | 20" x 28" |
| 47 | Hut                         | Tempera     | 23" x 31" |
| 48 | Water Toy 1                 | Gouache     | 26" x 24" |
| 49 | Water Toy 2                 | Gouache     | 14" x 21" |
| 50 | Landscape with construction | Gouache     | 8" x 14"  |
| 51 | Green Ireland               | Mixed media | 27" x 41" |
| 52 | Balloon                     | Mixed media | 12" x 20" |

### Josef Brož

|    |                    |     |             |
|----|--------------------|-----|-------------|
| 53 | Tree in Blossom    | Oil | 114" x 145" |
| 54 | Bathing            | Oil | 115" x 146" |
| 55 | Corn fields        | Oil | 78" x 114"  |
| 56 | Garden Restoration | Oil | 114" x 135" |

### Karel Souček

|    |                    |     |   |
|----|--------------------|-----|---|
| 57 | At the Hairdresser | Oil | 130" x 150"                             |
| 58 | Piccadilly         | Oil | 175" x 212"                             |
| 59 | Blue Passage       | Oil | 41 $\frac{1}{8}$ " x 41 $\frac{1}{8}$ " |

### Ota Janeček

|    |                       |     |   |
|----|-----------------------|-----|---|
| 60 | View from the Atelier | Oil | 51 $\frac{1}{8}$ " x 38 $\frac{1}{8}$ " |
| 61 | Grass                 | Oil | 28 $\frac{3}{4}$ " x 39 $\frac{1}{2}$ " |

### Ludmila Jiřincová

|    |          |                |           |
|----|----------|----------------|-----------|
| 62 | Sprite   | Line engraving | 12" x 10" |
| 63 | Magician | Line engraving | 12" x 10" |
| 64 | Witch    | Line engraving | 12" x 10" |
| 65 | Waterman | Line engraving | 12" x 10" |

### Adolf Hofmeister

|    |                                      |         |
|----|--------------------------------------|---------|
| 66 | Misfortunes of Little Sophie         | Collage |
| 67 | Sophie and the Lions                 | Collage |
| 68 | Sunday in London                     | Collage |
| 69 | Labyrinth—Encounter                  | Collage |
| 70 | Labyrinth—Rocket on the Moon         | Collage |
| 71 | Literary Kinds—Comic Opera           | Collage |
| 72 | Literary Kinds—Scientific Literature | Collage |

Also Drawings, Watercolours, Woodcuts, Collage and Engravings by

|             |          |
|-------------|----------|
| GUDERNA     | CHUDOMEL |
| HRUSKA      | DUBAY    |
| BOUDA       | HLOŽNIK  |
| SMETANA     | KLIMO    |
| MELICHAROVA | PADERLIK |

SEVEN ARTS GALLERY

30 Old Bond Street London W1

PAINTINGS

SOUČEK JANEČEK

3-24 July

GROSVENOR GALLERY

15 Davies Street London W1

WLADIMIR FAVORSKY

50 YEARS OF HIS GRAPHIC ART 1912-1960

10 July-18 August