



John Hoskin

sculpture

30 June – 25 July 1964

Grosvenor Gallery

30 Davies Street London w1
telephone
Mayfair 0891
telegrams
Sevenartz London

JOHN HOSKIN was born in Cheltenham in 1921. He trained as an architectural draughtsman and worked for three years from 1947 until 1950 when he started making sculpture and supporting himself with casual labouring jobs. In 1957 he became a part-time teacher at Bath Academy of Art, Corsham.

One of the most noted younger British sculptors, Hoskin's work is in the Tate Gallery, the Victoria and Albert Museum, the Arts Council Collection, the British Council Collection, the National Gallery of South Australia, Adelaide, the Art Gallery New South Wales, Australia, the Birmingham City Art Gallery, and the Leicester County Council collection. His sculpture has been included in the following exhibitions:

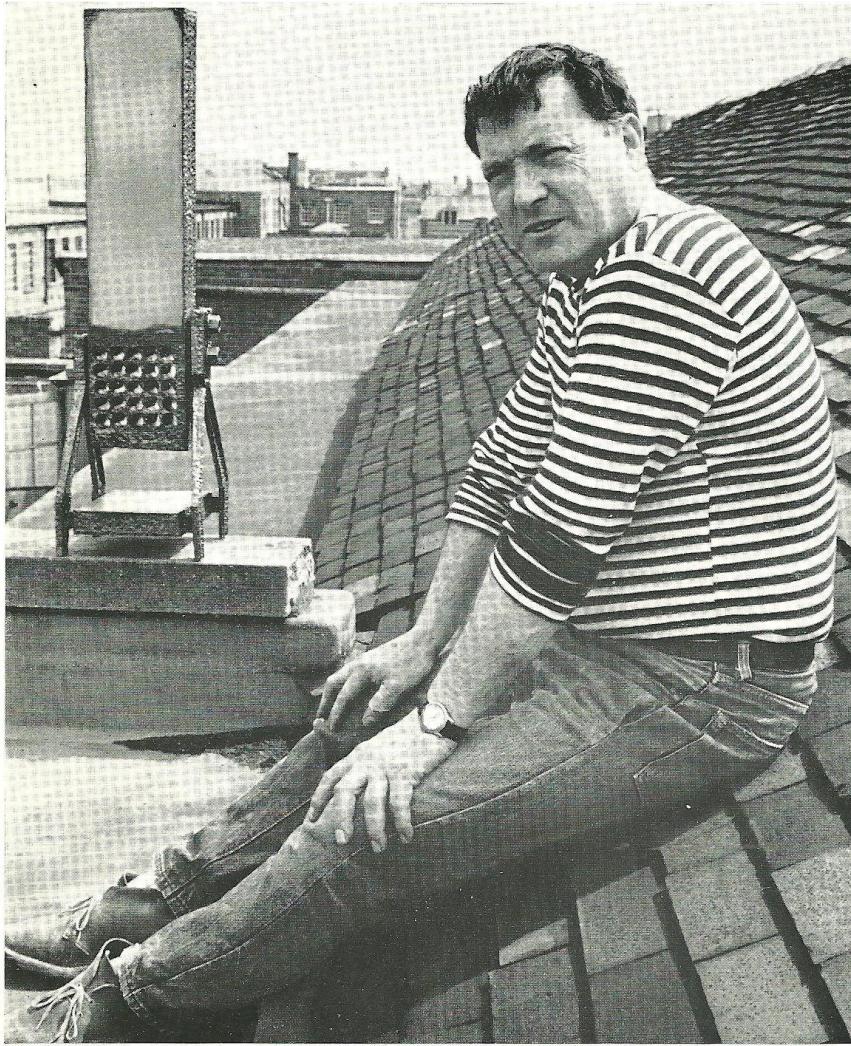
- 1954 London Group.
- 1956 Aldeburgh Festival.
Arts Council Travelling Exhibition.
- 1957 Lords Gallery.
Open-Air Sculpture Exhibition Holland Park.
Arts Council Travelling Exhibition.
- 1958 Arts Council Travelling Exhibition.
London Group.
Artists of Fame and Promise. Leicester Gallery.
- 1959 International Open Air Sculpture Exhibition, Middleheim Park, Antwerp.
Rome New York Art Foundation, Rome.

- 1960 Arts Council Travelling Exhibition.
- 1961 Matthiesen Gallery. One man show.
Arts Council Travelling Exhibition.
John Moores Exhibition, Liverpool.
Taynton Festival.
- 1962 Arts Council Travelling Exhibition.
Ashgate Gallery, Farnham.
- 1963 VII Tokyo Biennale.
Open Air Sculpture Exhibition Battersea Park.
Arts Council Travelling Exhibition.
Bear Lane Gallery, Oxford.
Midland Group, Nottingham.
Stone Gallery, Newcastle.
- 1964 Painting and Sculpture of a Decade, Tate Gallery.

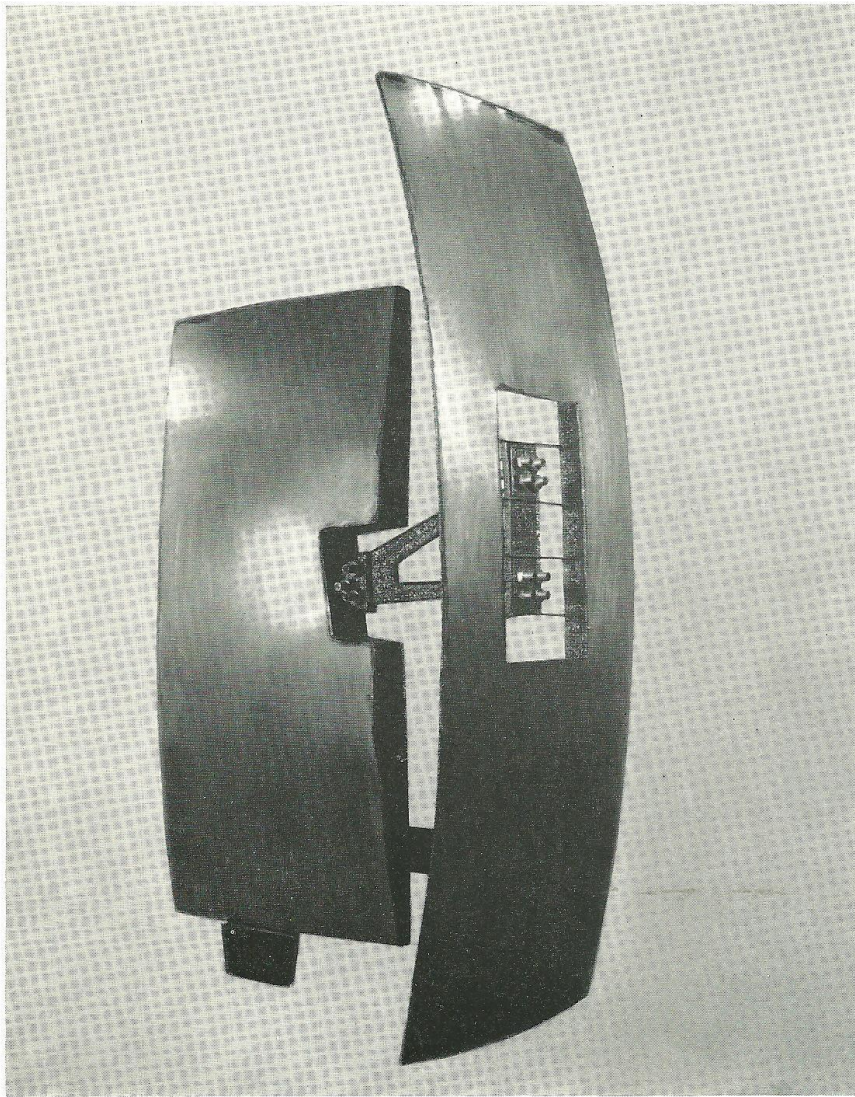
Commissions: "Exalted Christ" St. Stephens, Southmead, Bristol
Reredos, Nuffield College Chapel, Oxford.

- Bibliography:
- Art Now—Sir Herbert Read.
 - Quadrum II.
 - Motif 5.
 - A Concise History of Modern Sculpture—Sir Herbert Read.
 - Studio International—Charles S. Spencer.

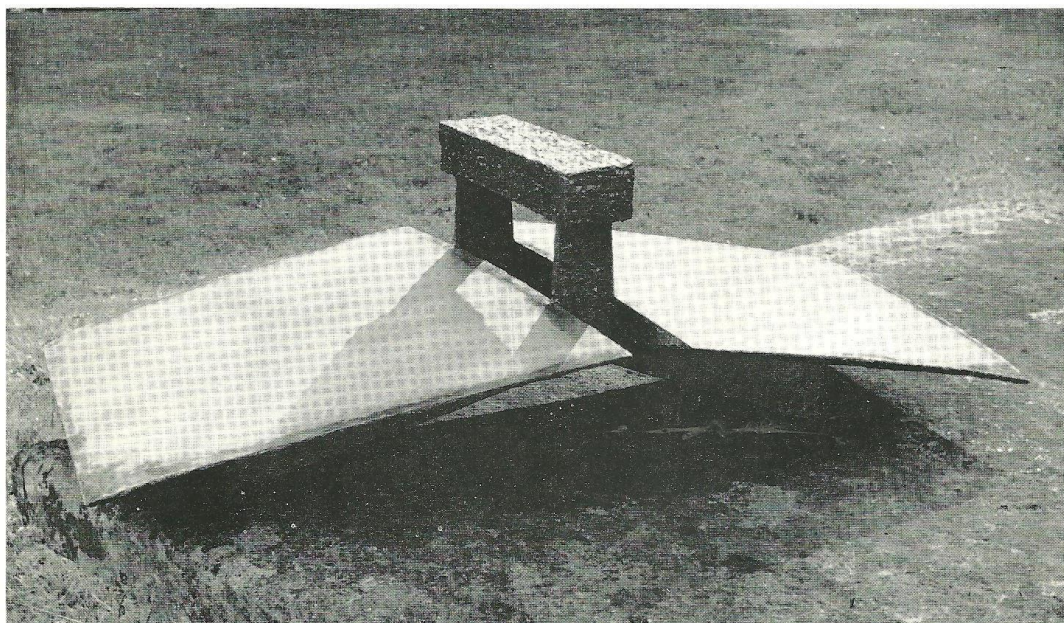
All photographs by David Farrell.

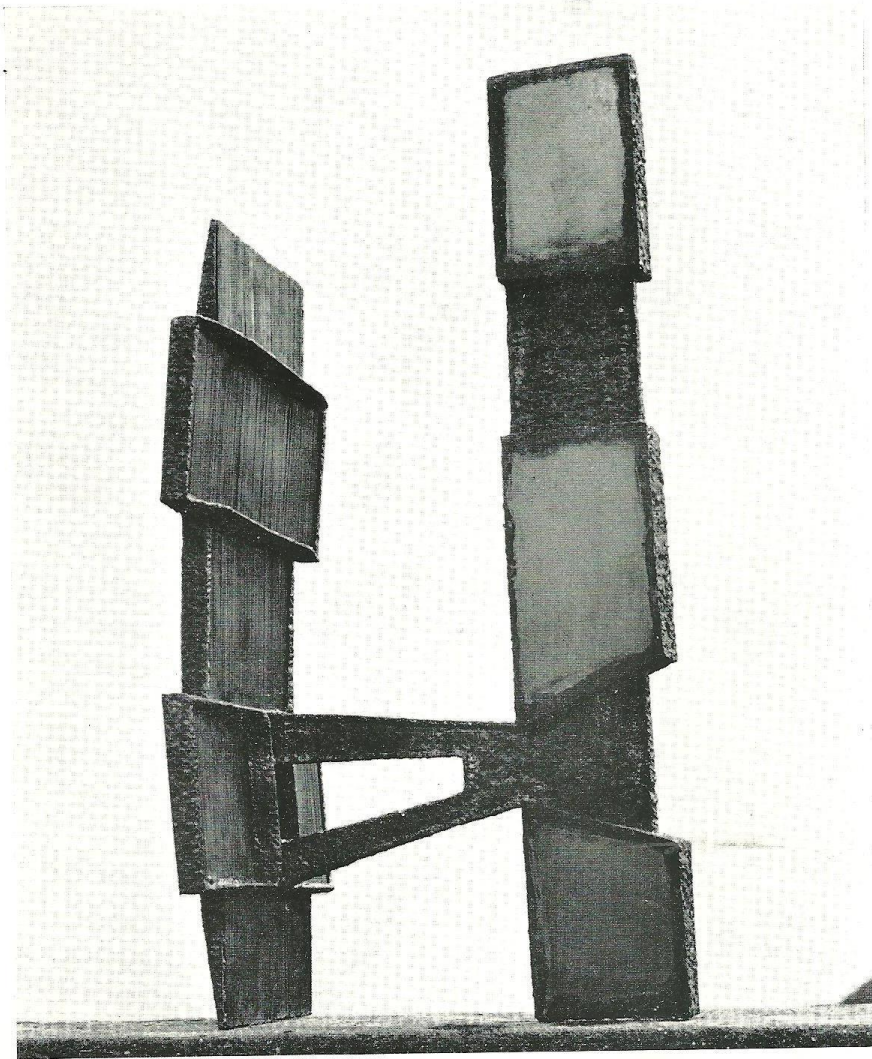


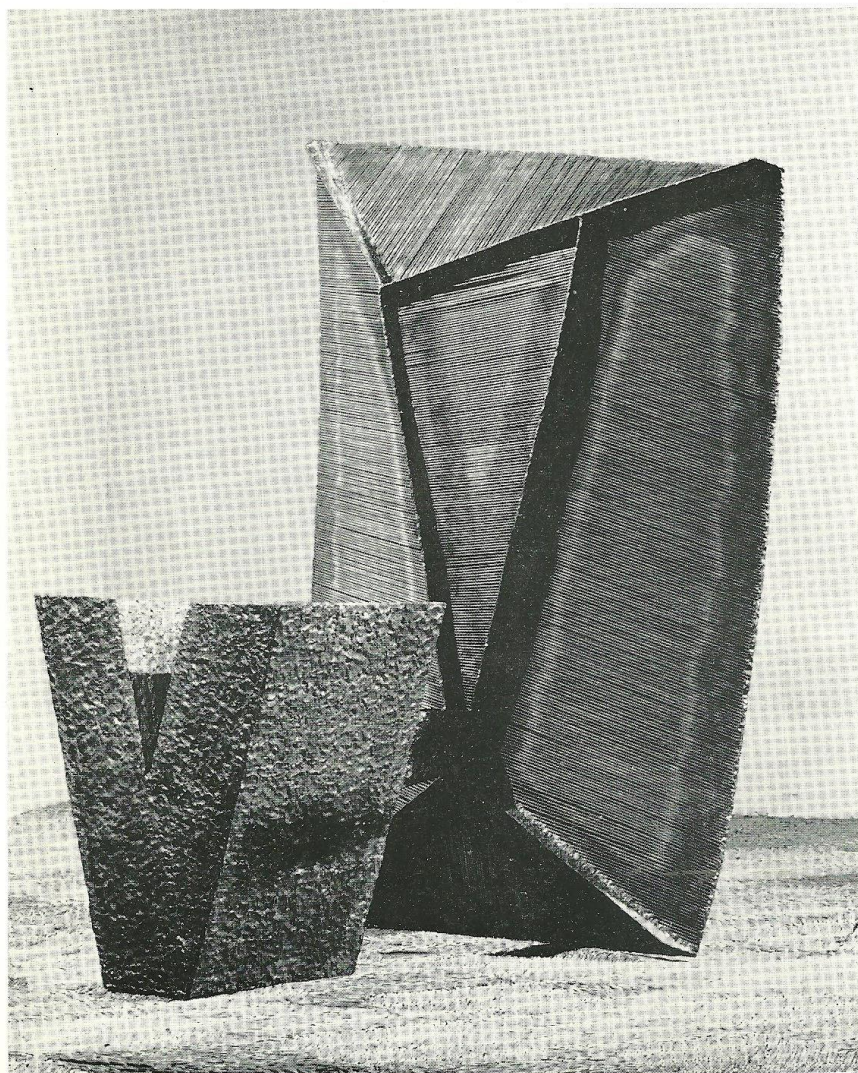
John Hoskins



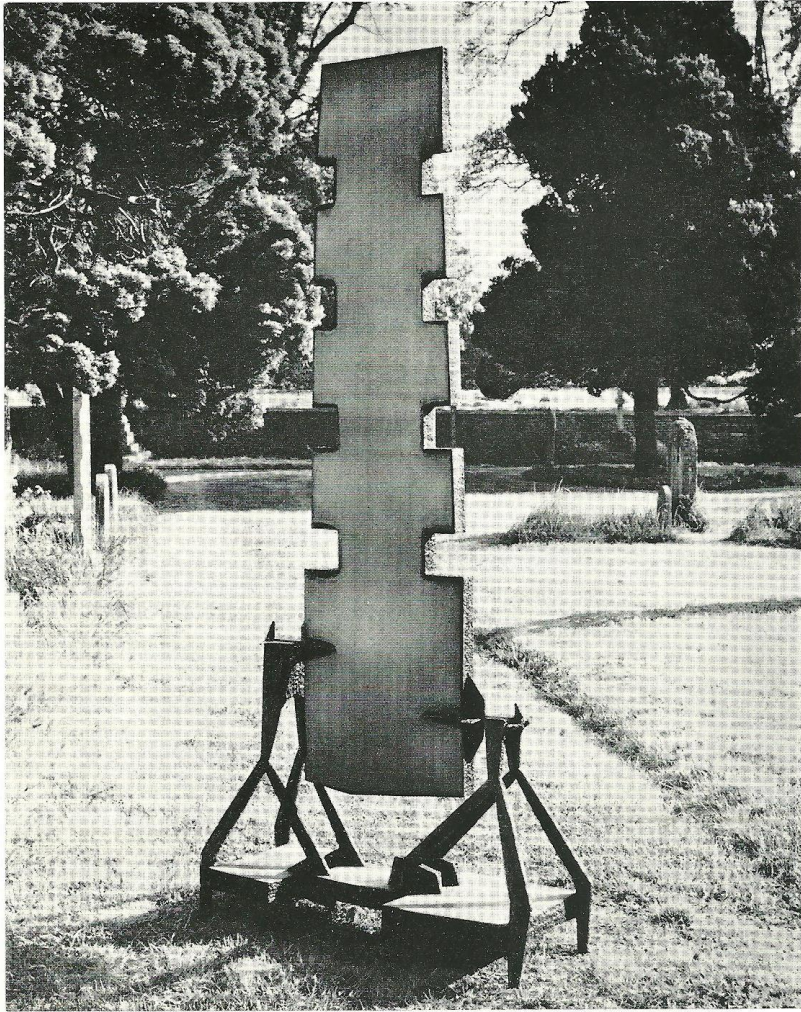
1 Big Flat



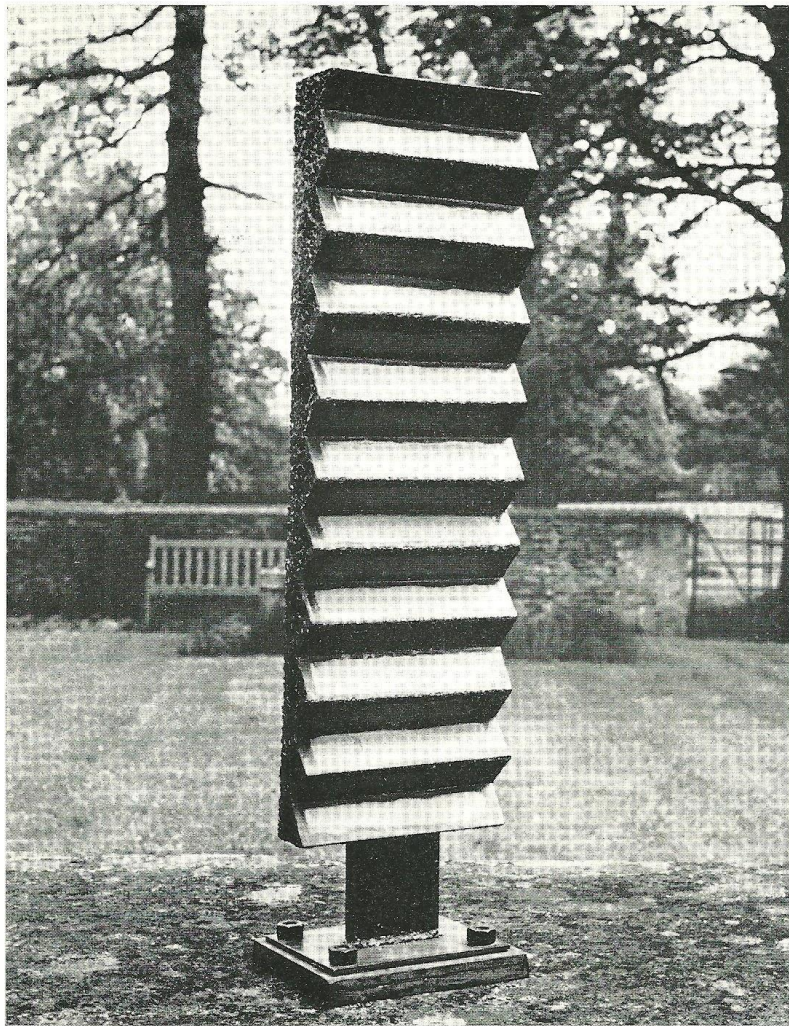




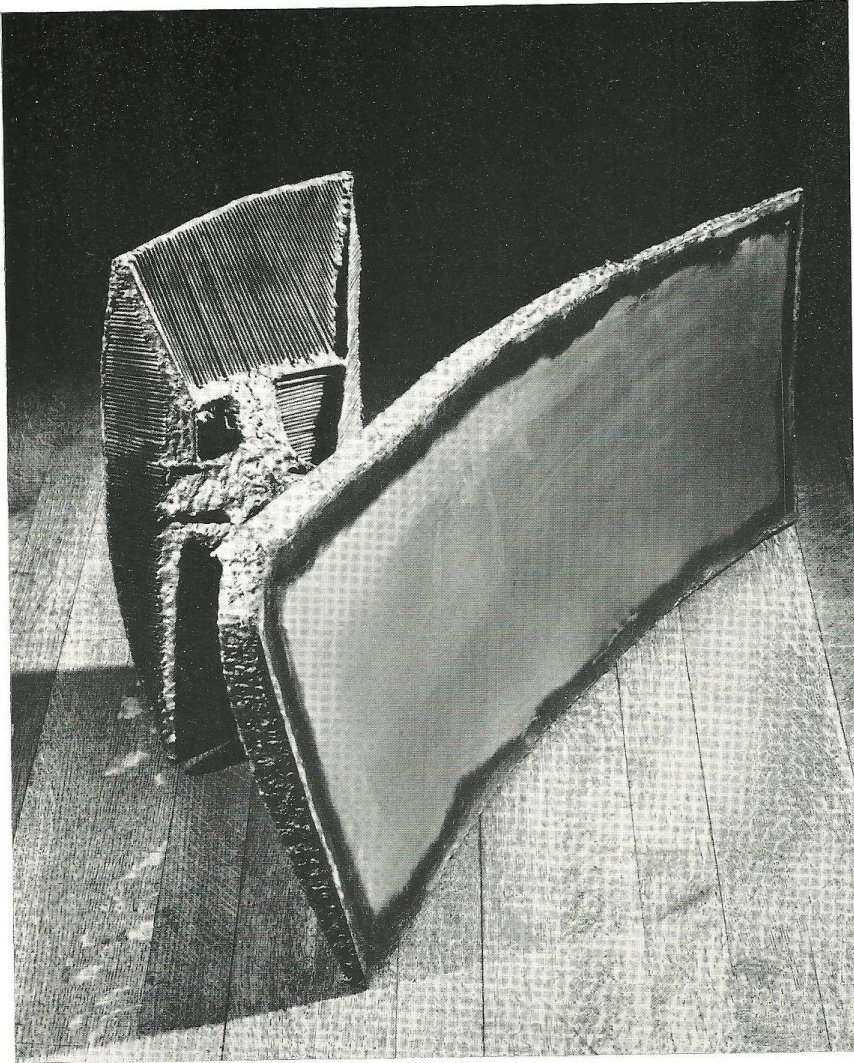
5 Big V



2 The Duke



12 Concertina Royale



next exhibition

20th Century Paintings and Sculpture

Printed by Graphis Press Limited London N1