



First image

Grosvenor Gallery



First image

painting and sculpture by artists
of the gallery

22 November to 4 January 1964

Grosvenor Gallery

30 Davies Street London w1
telephone
Mayfair 0891
telegrams
Sevenartz London

FIRST IMAGE, the Grosvenor Gallery's Opening Exhibition in its new and enlarged quarters, is devoted to fifteen artists of the Gallery. Nine of them live and work in this country, three in Italy, two in Hungary, and one in Czechoslovakia. Artists from The United States and the Soviet Union who would have been shown at this time, have not been included because we are planning large group exhibitions from both these countries during 1964.

FIRST IMAGE, therefore, is only a beginning—a springboard from which we hope to extend the range of our interests and continue our established policy of exhibiting Twentieth Century Modern Masters and developing the talents of young artists, wherever they may be found.

ERIC ESTORICK
JOHN SYNGE

November, 1963.



Born in 1921. First exhibition at Zwemmer's in 1939. Between 1943 and 1949 he had biennial exhibitions at the Redfern Gallery. Since then in addition to many group shows, he has had one-man exhibitions in Milan, Rome, Zurich and Paris. In London he had a Retrospective at the Whitechapel in 1955 and a one-man show at the Matthiesen Gallery in 1961. His work may be seen in the Tate Gallery, and numerous public and private collections both in this country and abroad. He began to

make sculpture in 1953 and, in addition to two exhibitions at the Leicester Galleries in 1957 and 1959, he had a one-man show in 1960 at the Main Street Gallery, Chicago.

Michael Ayrton

Sculpture

1	Minotaur	1962	bronze	52 × 33 × 22 ins
2	Daedalus winged	1959.60	bronze	16 × 17 × 14 ins
3	Slender sentinel	1962	bronze	24 × 5 ³ / ₄ × 5 ¹ / ₂ ins

each bronze is cast in an edition of six

Collages

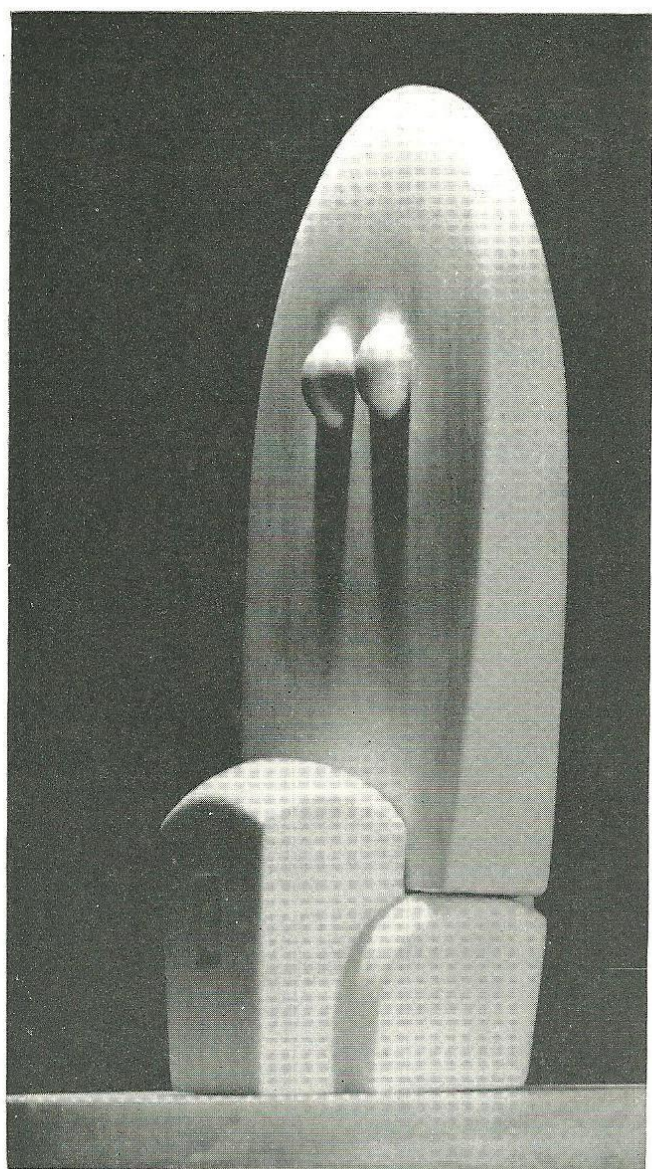
4	Study for oracle	1962		40 × 30 ins
5	Crow's feather landscape	1962		20 ¹ / ₄ × 24 ¹ / ₄ ins
6	Landscape in smoke	1962		20 × 24 ins



Born in Milan, 1924. Studied at the Brera Academy and at the same time graduated in law. In 1951 he pioneered the Nuclear Movement and in 1952 published in Brussels the first Nuclear Manifesto. He has had numerous one-man exhibitions in London, Europe, the United States and the Far East. His first and second one-man shows were held at Gallery One in 1957 and 1959. He last exhibited in London at the Seven Arts Gallery in 1962.

Enrico Baj

7	General Mechant et decore	Collage	51 × 38 ins
8	Enfant aux miroirs	Collage	19½ × 25½ ins
9	Furniture with three drawers	Collage	38 × 51 ins



Born in Pescara, Italy, 1920. Began to study sculpture with Domenico Rambelli and worked for many years with his brother Pietro on architectural ceramics. His first one-man show was held at the Obelisk Gallery (Rome) in 1949. He later exhibited at the Cavallino (Venice), the Naviglio (Milan), and the Selecta (Rome). In 1958 he was a winner in the international competition for the Auschwitz Memorial. In addition to inclusion in a mixed exhibition at the Grosvenor Gallery in 1960 Cascella

had a one-man show there in 1962. He now lives and works in Milan.

Andrea Cascella

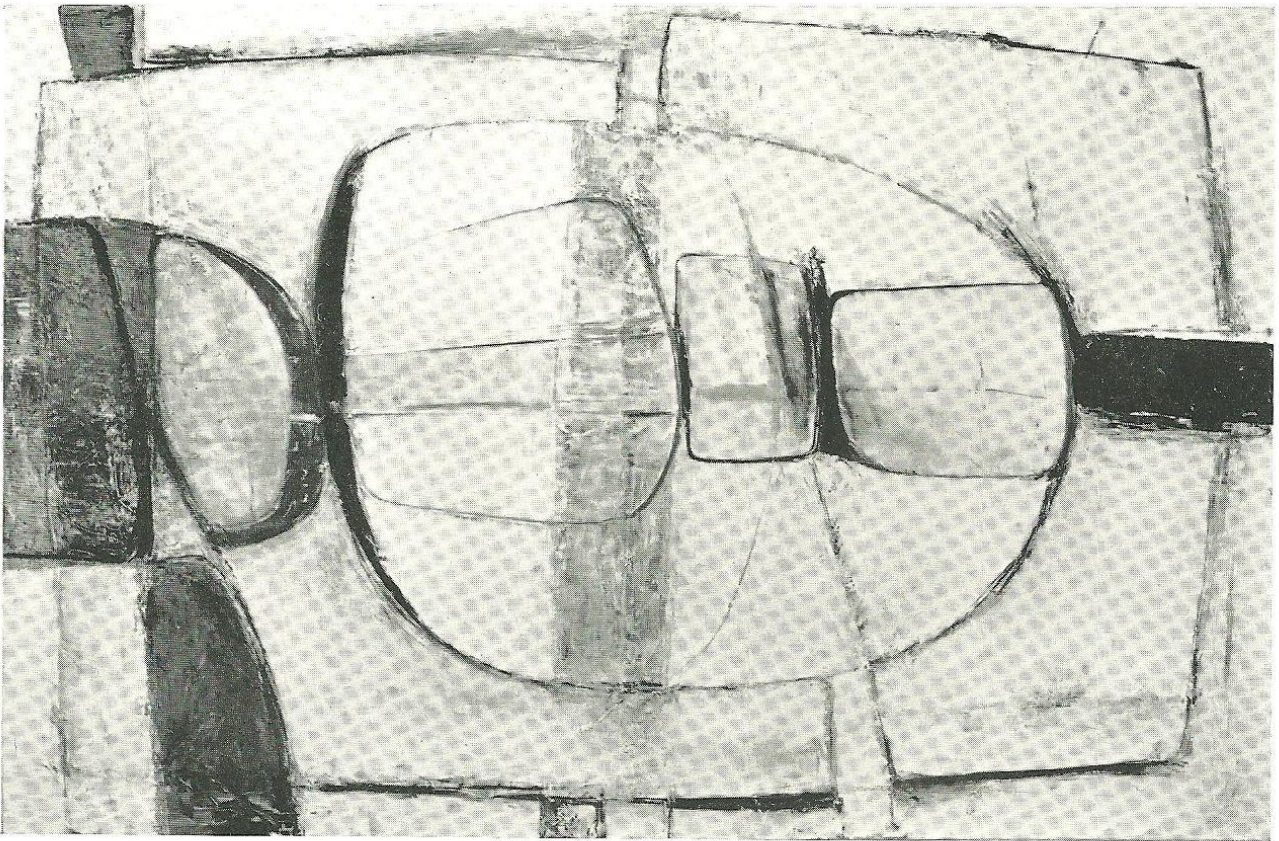
10	La sposa bianca	white marble	$24 \times 14\frac{1}{2}$ ins
11	Cariatide di chiampo	stone	$32 \times 14\frac{1}{2}$ ins
12	Pietra bianca	marble	$4\frac{1}{2} \times 8\frac{1}{2}$ ins
13	Marmo bianco	white marble	$5\frac{1}{4} \times 10\frac{3}{4}$ ins



Prunella Clough

Born in 1919. Studied at the Chelsea School of Art from 1938 to 1939. She had her first one-man exhibition at the Leger Gallery in 1947, followed by shows at Roland Browse and Delbanco (1949) and the Leicester Galleries (1953). In the autumn of 1960 she had a Retrospective at the Whitechapel. Her work may be seen in the Tate Gallery, and numerous public and private collections both in this country and abroad.

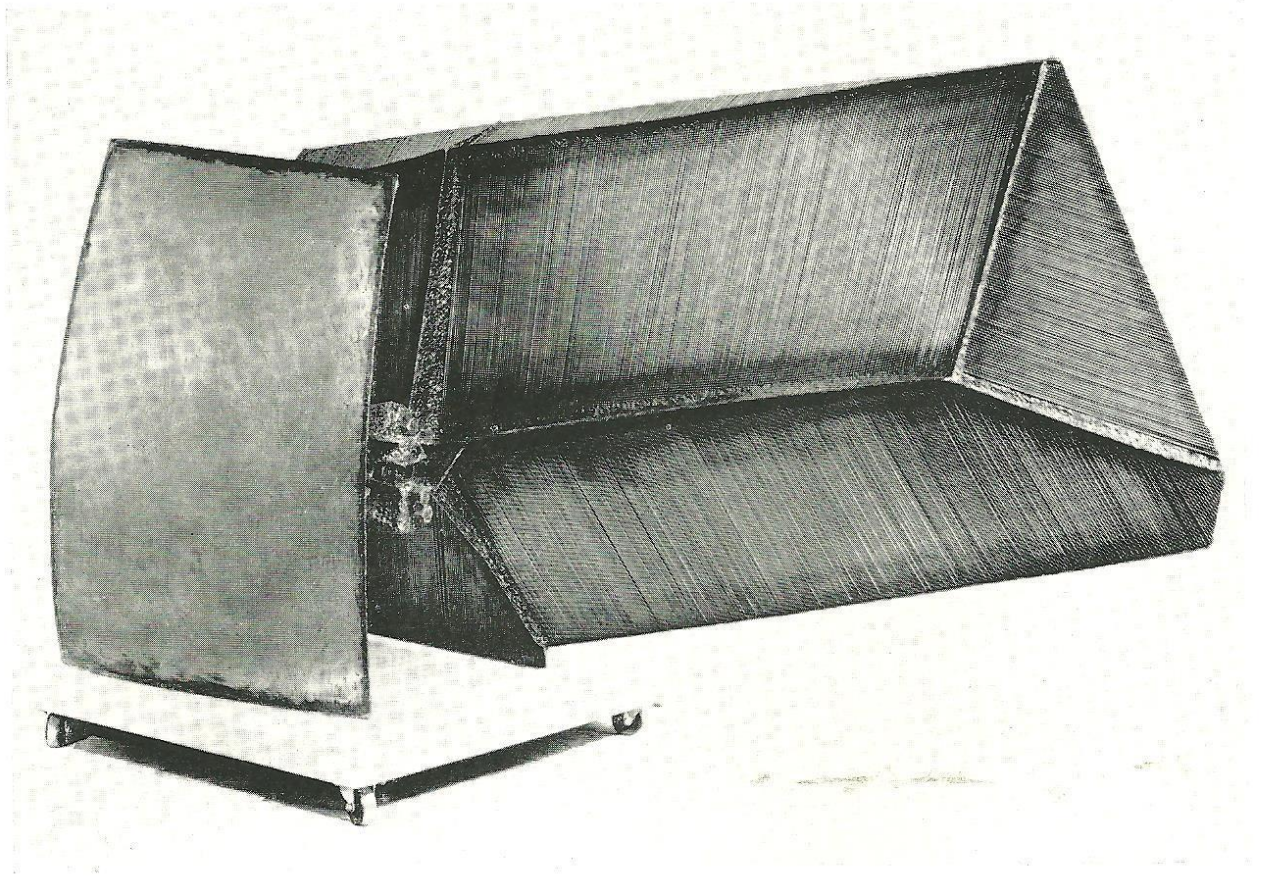
14	Fence: bindweed	1961	oil on canvas	27 × 22 ins
15	Suburban landscape	1961	oil on canvas	26 × 21½ ins
16	Figure and plant II	1962	oil on canvas	24 × 21 ins
17	Wasteground	1962	oil on canvas	36 × 45 ins
18	Figure in landscape I	1933	oil on canvas	26½ × 31 ins



Born in 1918. Studied at the Slade from 1937 to 1940. In 1953 he had his first one-man show at the Redfern Gallery—and again in 1956, 1958 and 1959. He has also had one-man shows at the Obelisk Gallery, Washington (1954 and 1958) and a Retrospective at the Arnolfini Gallery, Bristol, in 1961. His last exhibition was at the Grosvenor Gallery in 1962. Earlier this year he was included in the Contemporary Art Society survey of contemporary British Painting at the Tate Gallery.

Paul Feiler

19	Porthcadjack VI	1963	oil on canvas	48 × 72 ins
20	White, blue and black	1963	oil on canvas	36 × 48 ins
21	Penberth, blue	1963	oil on canvas	32 × 36 ins

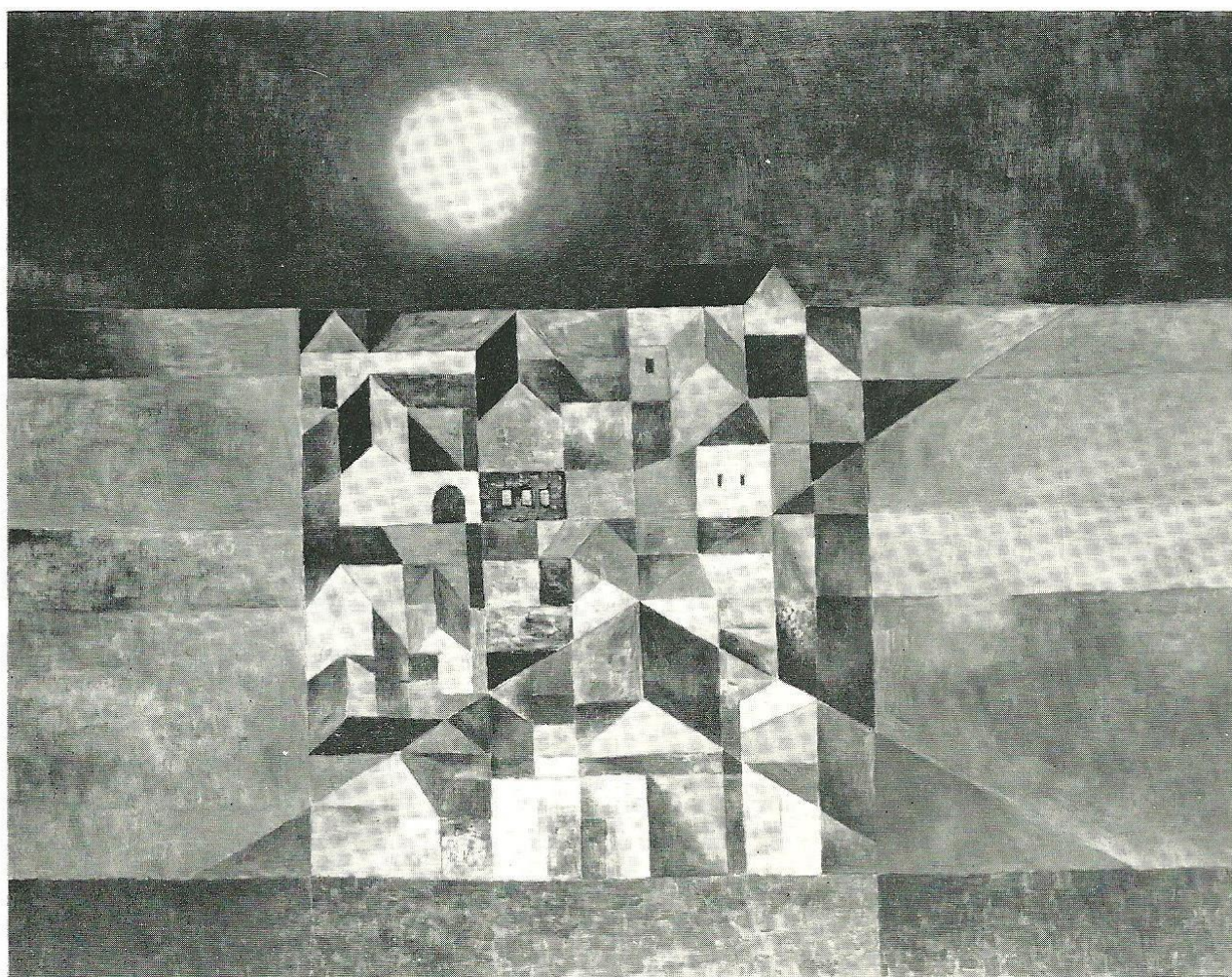


Born in 1921. Trained as an architectural draughtsman, he has been teaching at the Bath Academy of Art since 1957. He had his first one-man exhibition at the Matthiesen Gallery in the Spring of 1961. His work may be seen in the Tate Gallery and in many public and private collections both in this country and abroad. In 1962 he completed a commission for the Reredos of the Chapel of Nuffield College, Oxford. This year he has been represented at the seventh Tokyo Biennale and the London

County Council Sculpture
Exhibition at Battersea.

John Hoskin

22	Bolted flat	1963	mild steel	54 × 96 ins
23	Split column	1963	mild steel	53 × 15 ins

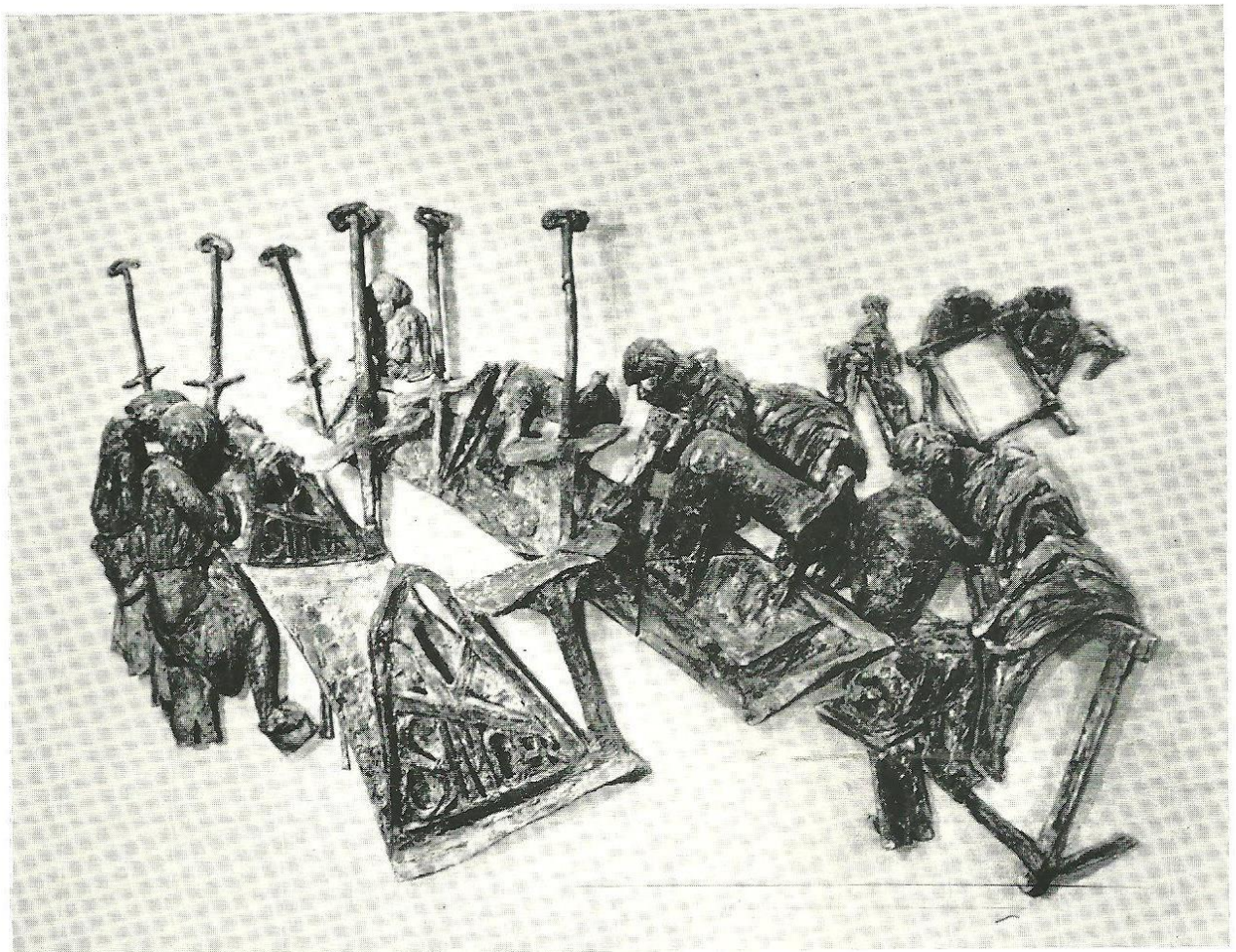


Born in Czechoslovakia, 1919. Has exhibited in numerous exhibitions in Czechoslovakia and abroad—Paris, Brussels, Lieges, Antwerp and Moscow; also Rio de Janiero and Sao Paolo. His coloured woodcuts have been shown in Copenhagen, Göteborg, Amsterdam as well as in Canada and the United States. In addition to his painting, drawing and graphic work Janecek has illustrated some forty books and has designed textiles, jewellery and postage stamps. His work has been seen in

London in mixed exhibitions at the Grosvenor, Seven Arts and Arthur Jeffress' Galleries.

Ota Janecek

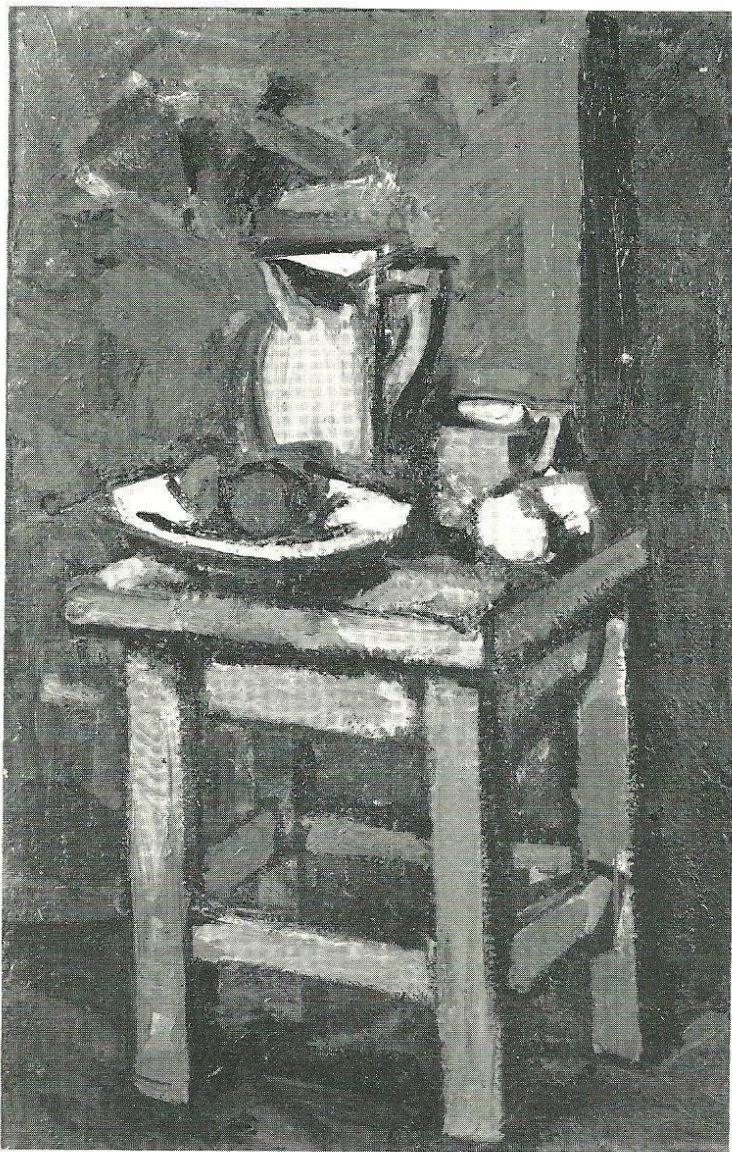
24	Venice village	1955	oil on canvas	$31\frac{1}{4} \times 39\frac{1}{2}$ ins
25	View from the studio	1955	oil on canvas	$51\frac{1}{2} \times 39$ ins
26	Travy grass	1960	oil on canvas	$28\frac{1}{2} \times 39$ ins
27	Organisms	1960	oil on canvas	$39 \times 51\frac{1}{2}$ ins



Born in England, 1922. Studied at the Slade. Exhibited at the Whitechapel Exhibition of Jewish Artists, 1960; and has been included in mixed shows at the Grosvenor Gallery. In 1961 she was commissioned to make a Crucifixion for the altar of St. John's, Southwark; and in 1962 she designed and executed a trophy for Centre '42.

Ghisha Koenig

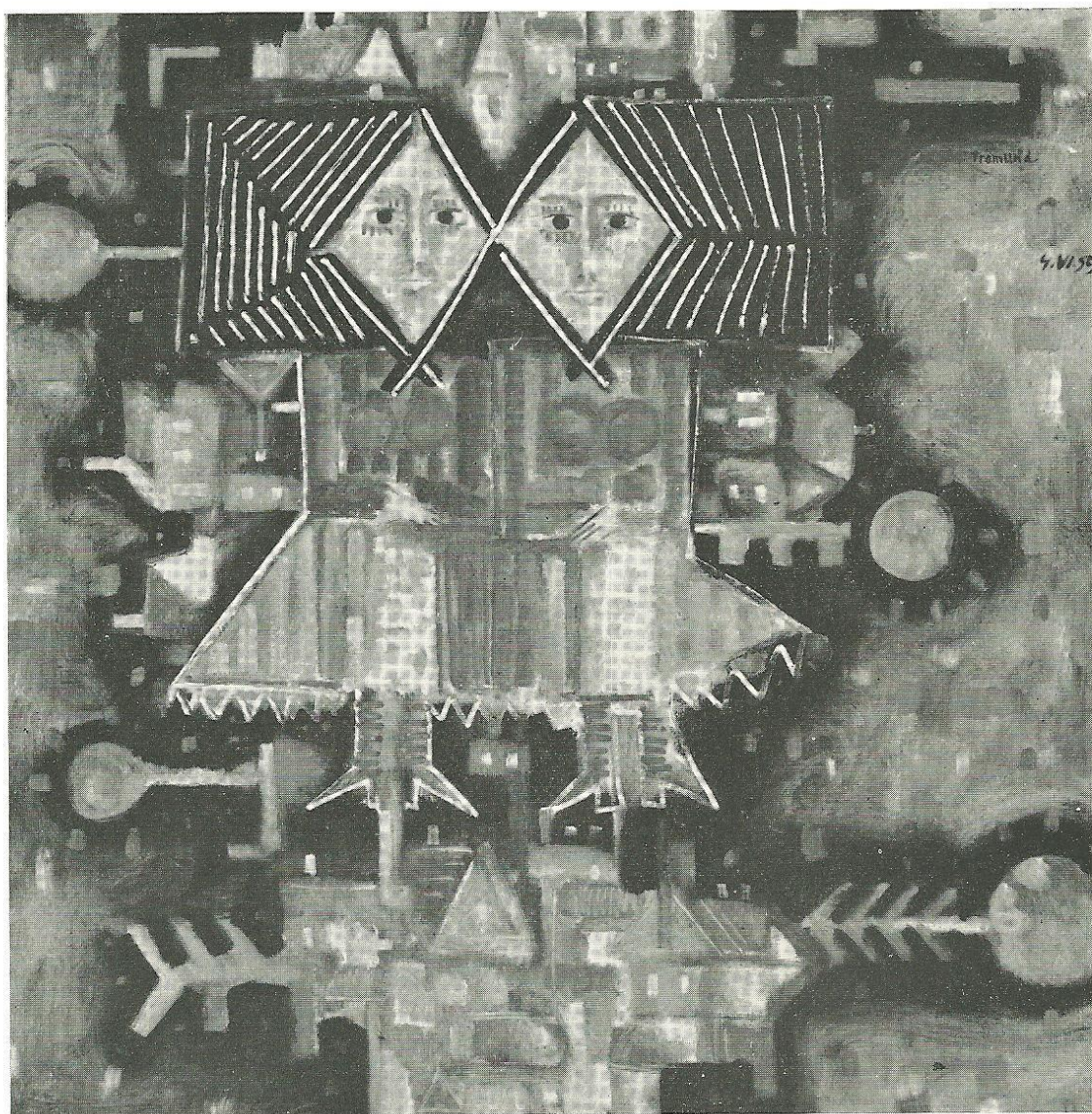
27a	Rag Trade V	1963	bronze	42 × 54 ins
28	Rag Trade VII	1963	terracotta	32 × 24 ins
28a	Rag Trade VIII	1963	terracotta	30 × 18 ins



Gyula Konfar

Born in Budapest, 1933. Studied first under Domanovsky, and in 1950 joined the Academy of Fine Arts in Budapest. He had his first one-man show there in 1958, when he won the Lenin Prize. He has since exhibited in New Delhi, Berlin, Warsaw, Moscow and Sofia. In 1959 he won the Gyula Derkovits Prize in Budapest. This is the first time his work has been seen in London.

29	Still life	1961	oil on board	54½ × 35 ins
30	Portrait of a young man	1963	oil on board	50½ × 41½ ins



Born in Prague, 1928.
Studied at the Academy of Arts.
Since 1957 he has had one-man
exhibitions in Prague, Brno and
Hollar. His work has also been
shown in the Soviet Union and
Poland. This is the first occasion
that his paintings have been
exhibited in this country.

Richard Fremund

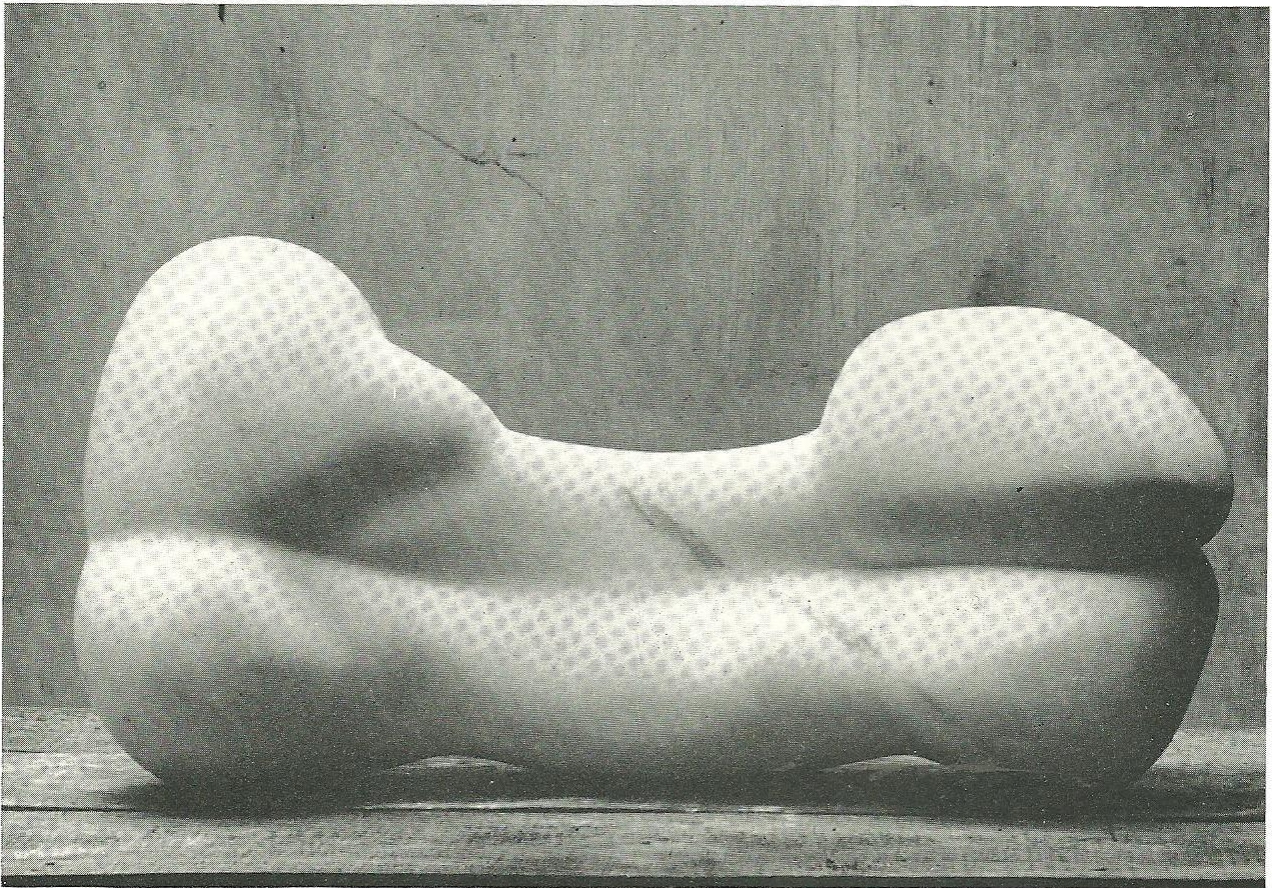
37	Village	1957	oil on canvas	37 × 51 ins
38	Sunday in a village in Bohemia	1959	oil on canvas	39½ × 39¼ ins



Born in Hungary, 1923. Studied in Budapest at the Hungarian Academy of Fine Arts. His first one-man show was held in 1962 in Budapest. This is the first time his work has been seen in London.

Mihaly Schener

40	The artist and his wife	1963	oil on board	27 × 39 ins
41	Still life	1963	oil on board	27 × 39 ins
42	Peasant women	1963	oil on board	27 × 39 ins
43	Peasant resting	1963	oil on board	27 × 39 ins



Born in Italy, 1929. Studied sculpture in the Brera Academy, Milan, with Marino Marini; and later became a teacher at the Bath Academy of Art, Corsham. In addition to numerous group shows Silvestri has had one-man exhibitions in Milan, New York and Hongkong. She has exhibited in London, in mixed shows, at both the Grosvenor and Jeffress' Galleries. She was represented at the Venice Biennale in 1956—and she has collaborated in the architectural decoration of

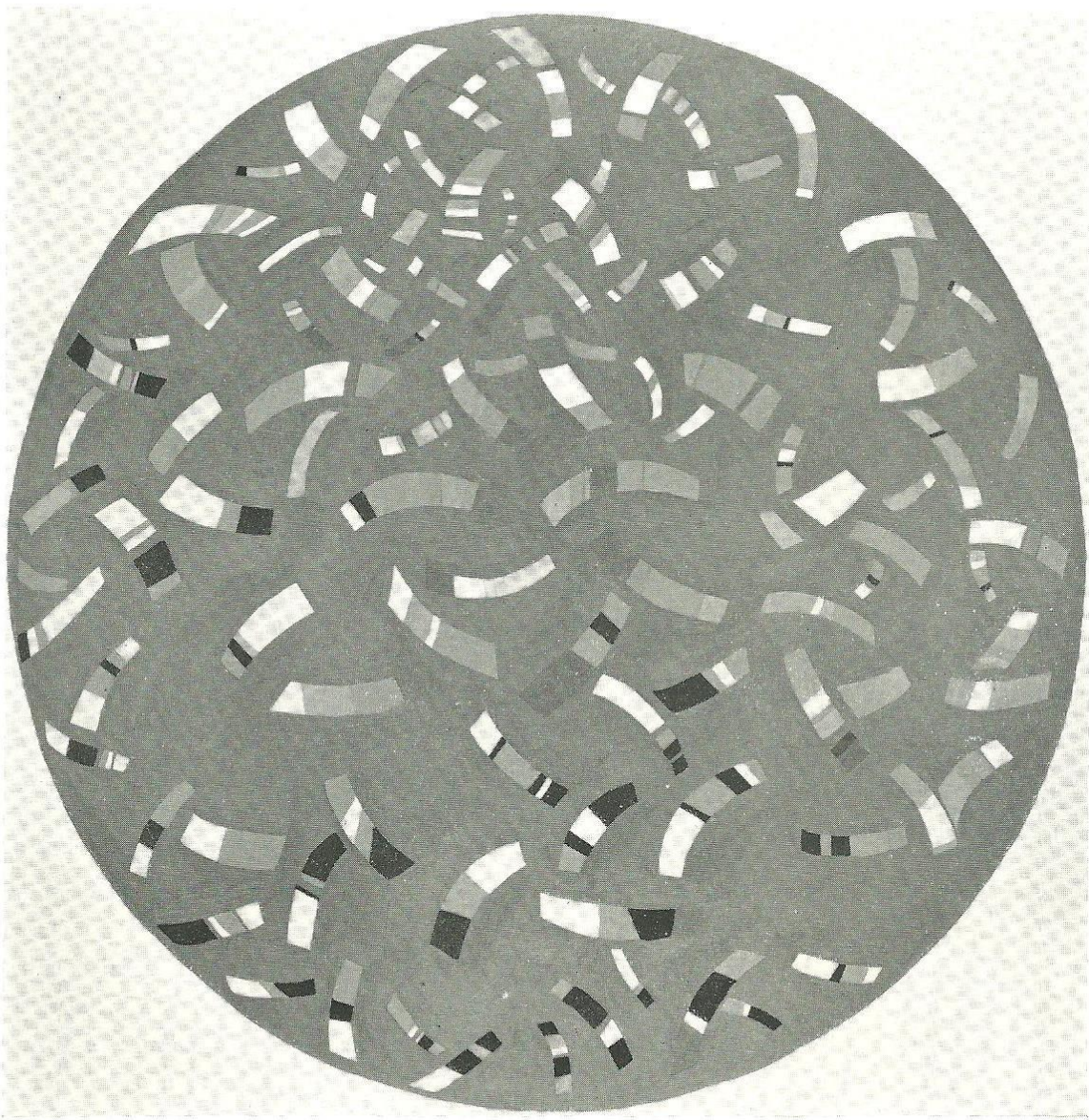
buildings in Italy, Japan, Hongkong and the United States.

Lydia Silvestri

44	Torso	1963	white marble	10 × 25 × 13½ ins
45	Torso	1963	black marble	16 × 12 ins
46	Torso	1963	grey marble	8 × 24 × 5 ins
47	Torso	1963	saltrio marble	13½ × 17 ins

Jack Smith

50 Red, yellow, and green
movement 1962



Born in 1928. Since exhibiting at the Beaux Arts Gallery between 1952 and 1958 he has had, in addition to numerous mixed exhibitions, the following one-man shows: Catherine Viviano Gallery, New York (1958, 1962); a Retrospective at the Whitechapel (1959); the Matthiesen Gallery (1960, 1963); and the Midland Group Gallery, Nottingham (1961). Earlier this year he was included in the Contemporary Art Society Survey of contemporary British painting at the Tate Gallery. His work may be

seen in the Tate Gallery, and in numerous public and private collections both in this country and abroad.

Jack Smith

48	Coming and going II	1962	oil on canvas	42 × 42 ins
49	Up and down	1962	oil on canvas	36 × 36 ins
50	Red, yellow and green movement	1962	oil on canvas	42 × 42 ins
51	First and second movement II	1962	painted relief	22 × 18½ ins



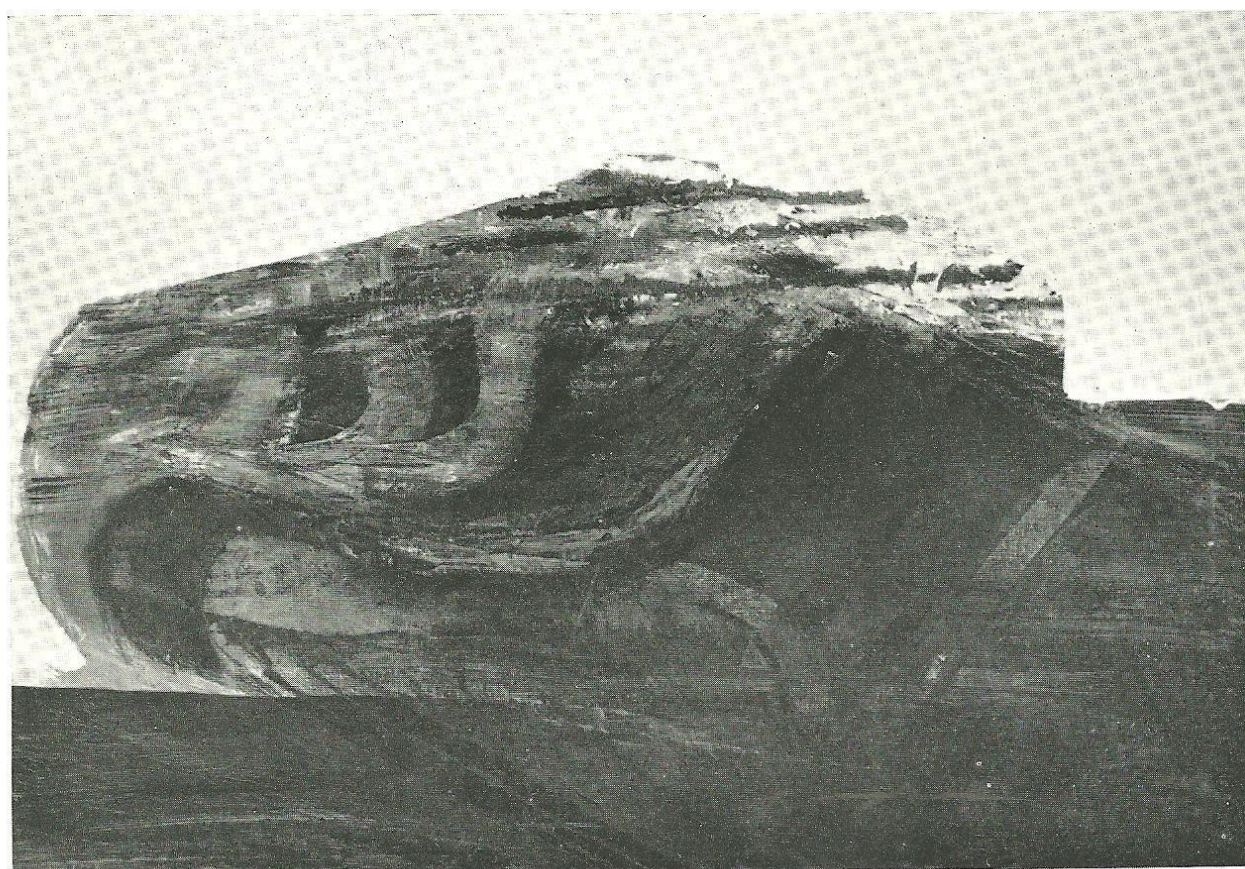
Born in Goa, 1924. After studying and exhibiting in India between 1940 and 1949 he arrived in London, where he now lives and works. In addition to many group exhibitions both in this country and abroad, Souza has had one-man shows in the Galerie R. Creuze, Paris (1954), the Gallery St Nikolaus, Stockholm (1959), the Gallery Franck, Frankfurt (1959), Das Institut für Auslandsbeziehungen, Stuttgart (1960), the Galerie Lambert, Paris (1960), the Kumar Gallery, New Delhi (1962),

the Stone Gallery, Newcastle-upon-Tyne (1962).

In London Souza has had one-man exhibitions at Gallery One in 1955, 1956, 1959, 1960, 1961 and 1962.

F N Souza

52	The Deposition	1963	oil on canvas	68½ × 80 ins
53	Large landscape	1963	oil on canvas	72 × 51 ins
54	Small landscape	1963	oil on canvas	33½ × 33½ ins
55	Still life in red	1963	oil on canvas	33½ × 40 ins



Born in 1925. Weschke, who is mainly self-taught as a painter, now lives and works in Cornwall. He has had one-man shows in London at the New Vision Centre (1958), the Woodstock Gallery (1959) and the Matthiesen Gallery (1960). Earlier this year, he was included in the Contemporary Art Society survey of Contemporary British Painting at the Tate Gallery. He has contributed to many mixed exhibitions, and his work is included in the Museum of Modern Art, New York; the Art Museum,

Baltimore; and the Art Gallery of New South Wales.

Karl Weschke

56	Cloud	1963	oil on canvas	60 × 66 ins
57	Overcast	1963	oil on canvas	28 × 66 ins
58	Sudden view	1963	oil on canvas	32 × 48 ins

next exhibition

recent paintings and drawings
by KARL WESCHKE
6 – 25 January 1964