



# Fifty Years of Sculpture

Some aspects 1914-1964

9 February - 11 March 1965

## Grosvenor Gallery

28/30 Davies Street London w1  
telephone  
Mayfair 0891  
telegrams  
Sevenartz London

**ARCHIPENKO Alexander (1887-1964)**

Born Kiev, Ukraine. Later worked in Paris and Berlin.  
Settled in the United States in 1923.

- 1 **Boxers 1914** *illustrated* **Bronze** 24½ ins. h.

**ARP Jean**

Born Strasbourg 1887.

- 2 **Head** *illustrated* **Brass** 15¼ ins. h.

**GUTFREUND Oto (1889-1927)**

Born in Bohemia. Studied Academy of Fine Arts,  
Prague and at the Grande Chaumiere, Paris under  
Bourdelle.

- 3 **Lovers 1925** *illustrated* **Cast Tin** 4¾ ins. h.  
4 **Lovers 1925** **Cast Tin** 5¾ ins. h.  
5 **Fighters 1924** **Cast Tin** 6½ ins. h.  
6 **Sitting Woman 1927** **Cast Tin** 7 ins. l.  
7 **Reclining Woman 1927** **Cast Tin** 5¾ ins. l.  
8 **Head 1919** **Cast Tin** 11 ins. h.

**MOORE Henry**

Born Castleford, Yorkshire 1898.

- 9 **Animal Head 1951** **Bronze** 10½ ins. h.  
10 **Mother and Child** **Bronze** 15 ins. h.

**UHLMANN Hans**

Born Berlin 1900

- 11 **Construction** **Aluminium** 35 ins. h.

**VIANI Alberto**

Born Quistello, Italy 1906

- 12 **Torso** **White Marble** 52¾ ins. h.

**KALLEM Herbert**

Born Philadelphia 1909

- 13 **Figure** **Bronze** 14¾ ins. h.  
14 **Embryo 1953** **Bronze** 13½ ins. h.  
15 **The Virgin 1952** **Bronze** 14½ ins. h.

**MASTROIANNI Umberto**

Born Fontana Liri, near Rome, 1910.

- 16 **Head** **Bronze** 13¼ ins. h.

**SERRANO Pablo**

Born Crivillen, Spain 1910.

Studied in Barcelona, lives in Madrid.

- 17 **Ojo Óptico** **Bronze** 15 ins. h.  
18 **Ombigo Oecumenico** **Bronze** 20 ins. h.

**HOFLEHNER Rudolf**

Born Linz, Austria 1916.

- 19 **Homage à Camus** *illustrated* **Iron** 88½ ins. h.  
20 **Standing Figure** **Bronze** 43¼ ins. h.  
21 **Standing Figure** **Bronze** 38½ ins. h.

**SURSOCK Serge**

Born Alexandria, Egypt 1917 of Lebanese and  
Italian origin. Studied in Alexandria and later under  
Zadkine.  
Lives in Rome.

- 22 **Nascita I** **Bronze** 14 ins. h.  
23 **Mother and Child** **Bronze** 18 ins. h.

**PENALBA Alicia**

Born Buenos Aires 1918. Lives Paris.

- 24 **Entincella** *illustrated* **Bronze** 16¼ ins. h.  
25 **Sculpture** **Bronze** 15½ ins. h.

**WARREN DAVIS John**

Born England 1919. Teaches at the Central School  
of Arts and Crafts.

- 26 **Ergo** *illustrated* **Plaster painted, wood base**  
62 ins. h.  
27 **Mykonos** **Wood painted** 30 ins. diameter  
28 **Nucleus I. A.** **Wood** 17 ins. h.

**COLLA Ettore**

Lives Rome.

- 29 **Sculpture** **Iron** 39¼ ins. h.

**CASCELLA Andrea**

Born Pescara, Italy 1920. Lives Milan.

- 30 La Sposa Bianca White Marble 3-part 24 ins. h.  
 31 Marmo Bianco II Marble 3-part 39 ins. h.

**ELOUL Kosso**

Born Maurom, Russia 1920. In Israel since 1924.  
 Lives Tel Aviv.

- 32 Duality 1964 Stone 55 ins. h.

**CONSAGRA Pietro**

Born Mazara, Sicily 1920. Lives in Rome.

- 33 Leaf Abstraction I 1957 *illustrated* Bronze  
 24 ins. h. × 32 ins. l.

**YAMEY Helen**

Born South Africa 1920. Studied St. Martin's  
 School of Art.

- 34 Sculpture 1964 Mahogany 48 ins. l.  
 35 Sculpture 1964 *illustrated* Lime 36 ins. h.

**CRIPPA Roberto**

Born Milan 1921.

- 36 Standing Figure *illustrated* Iron 59½ ins. h.

**AYRTON Michael**

Born London 1921. Included in *British Sculpture of the  
 Sixties at the Tate Gallery*.

- 37 Icarus Rising 1961 variant 1963 Bronze 60 ins. h.  
 38 Slender Sentinel 1963 Bronze 24 ins. h.  
 39 Daedalus Winged 1959-60 *illustrated* Bronze  
 16½ ins. h.  
 40 Sentinel Fetish 1963 Bronze 20 ins. h.

**HOSKIN John**

Born Cheltenham 1921. Teaches at Bath Academy  
 of Art, Corsham. Included in *British Sculpture of the  
 Sixties at the Tate Gallery*.

- 41 Standing Figure 1964 Mild Steel 41 ins. h.  
 42 Standing Figure 1964 Mild Steel 34½ ins. h.  
 43 Dozer 1964 Mild Steel 22 ins. h.

**STARTUP Peter**

Born London 1921. Included in *British Sculpture of the  
 Sixties at the Tate Gallery*.

- 44 Horizontal Figure 1962 Ash, Pine and Plane  
 48 ins. h.  
 45 Staggered Cannon 1963 Ebony, Teak and Pine  
 89 ins. h.

**KOENIG Ghisha**

Born London 1922. Studied at the Slade School of  
 Art.

- 46 Machine Punchers 1961 Terracotta 15 ins. h.  
 47 Tea Break III 1964 Terracotta 6 ins. h.  
 48 Tea Break V 1964 Terracotta 3½ ins. h.

**GABINO Amedeo**

Born Valencia, Spain 1922. Studied Academy of Fine  
 Arts, Valencia. Lives Madrid.

- 49 Icaro Iron 19 ins. h.  
 50 Germinal Iron 35 ins. h.  
 51 Armadura No. 13 Iron 28 ins. h.

**CHAVIGNIER Louis**

Born Montboudif, France 1922. Lives Paris.

- 52 Sculpture *illustrated* Brass 26 ins. h.  
 53 Le Miroir aux Alouettes Bronze 72 ins. h.

**TAJIRI Shinkichi**

Born Los Angeles, U.S.A. 1923. Lives in Holland.

- 54 Angel I 1960 Welded Bronze 27½ ins. h.  
 55 Angel II 1960 Welded Bronze 23¼ ins. h.  
 56 Abstract 1960 Welded Bronze 19 ins. h.

**AZAZ Nechemia**

Born Berlin 1923. Resident in Israel since 1924.  
 At present resident artist, Carmel College, England.

- 57 Tower of Words 1964 Bronze 27 ins. h.  
 58 Precarious Balance 1964 Bronze 21 ins. h.  
 59 Man - The Signal 1964 Bronze 19 ins. h.





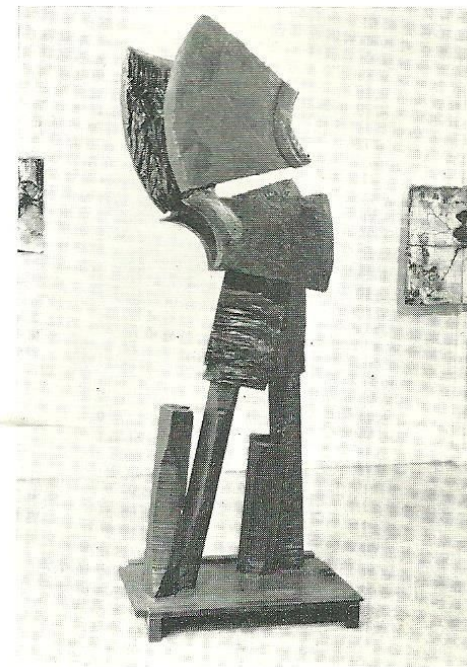
1 ARCHIPENKO Boxers 1914



2 ARP Head



3 GUTFREUND The Lovers 1925

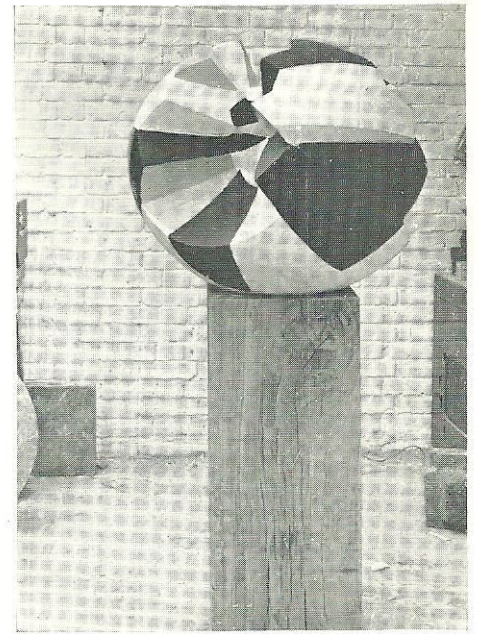


19 HOFLEHNER Homage à Camus





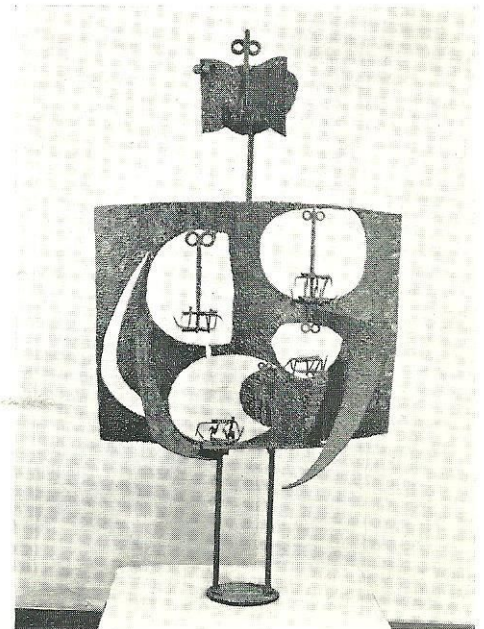
24 PENALBA Entincella



26 WARREN DAVIS Ergo

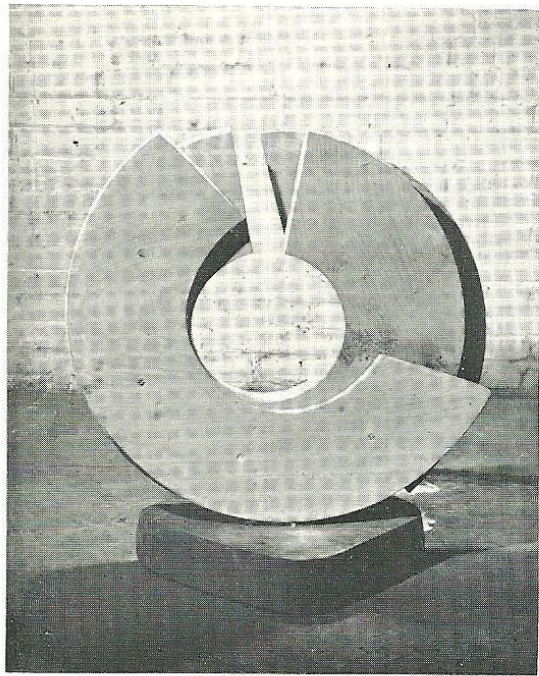


33 CONSAGRA Leaf Abstraction I 1957



36 CRIPPA Standing Figure

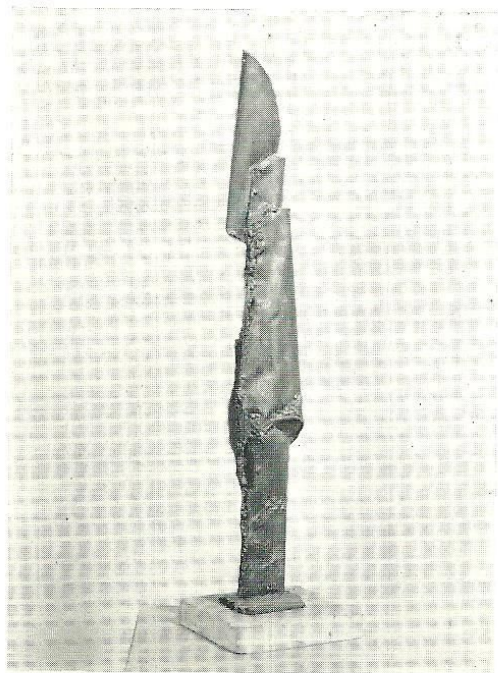




35 YAMEY Sculpture 1964



39 AYRTON Daedalus Winged 1959-60

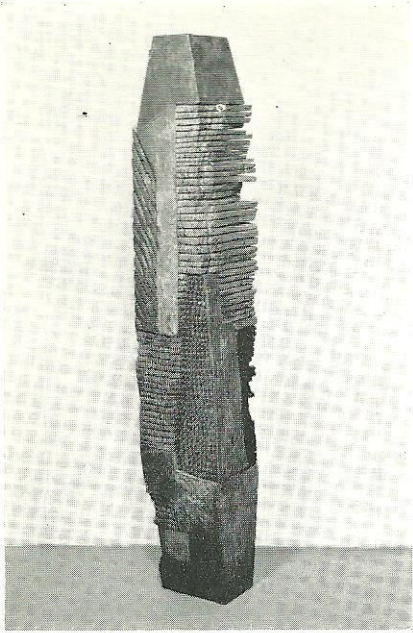


52 CHAVIGNIER Sculpture

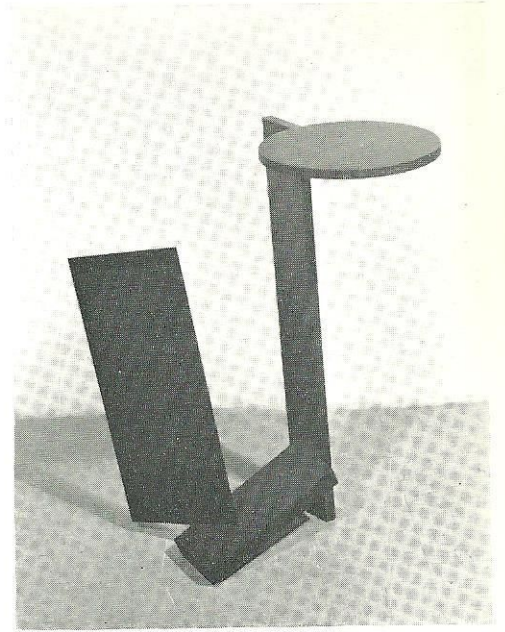


60 EVENSEN Crucified 1964

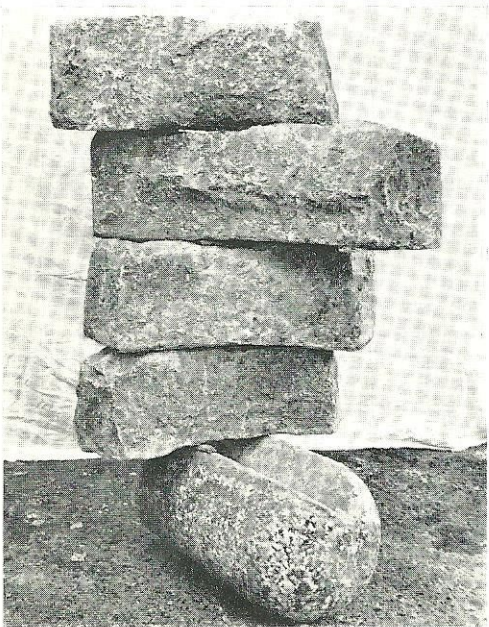




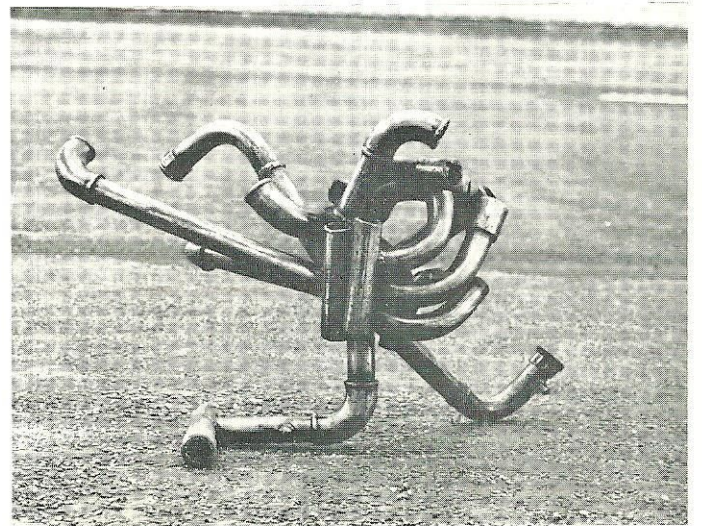
80 CERVELLI Totem



91 WALL Black Sculpture 1964



92 KADISHMAN The Negev 1964



106 PERLMAN Go II 1964



**EVENSEN Bjorn**

Born Stockholm 1924.

- 60 Crucified 1964 *illustrated* Welded Steel and wood  
69 ins. h.
- 61 Libera II 1964 Bronze 36 ins. h.
- 62 Libera III 1963 Wood 80 ins. h.
- 63 Crucifixion 1964 Bronze and wood 45 ins. h.
- 64 Crucifix 1962 Wood 84 ins. h.

**WILLIS Richard**

Born 1924. Studied Reading School of Art.

- 65 Sculpture Mild Steel and glass 1964 26 ins. h.
- 66 Sculpture Mild Steel and glass 1964 50 ins. h.
- 67 Sculpture Stainless Steel 1964 19 ins. h.

**CARRUTHERS R. A.**

Born Cumberland 1925. Studied Cheltenham School of Art and Royal College. Teaches Oxford School of Art.

- 68 Samurai 1964 Bronze 11 ins. h.
- 69 Growth 1964 Bronze 11 ins. h.
- 70 Head 1964 Brass and Copper 15 ins. h.

**LEIGH Roger**

Born Broadwell, Gloucestershire 1925. Studied architecture at Liverpool University and worked in studio of Barbara Hepworth.

- 71 Winged Idol 1963 Bronze and Yew 19½ ins. h.
- 72 Pagoda 1964 Bronze 22 ins. h.
- 73 Corona 1962 Stained Pine and Concrete 42 ins. h.

**KINLEY Peter**

Born Vienna 1926. Resident in England since 1938. Studied St. Martins School of Art. Teaches Wimbledon School of Art.

- 74 Study for a Monument to a Pharaoh Painted Steel  
19½ ins. h.

**STEPHENSON George**

Born London 1926. Studied at Willesden College of Art and Hornsey College of Art. Head of Ceramics Department Rochdale School of Art.

- 75 Extended Figure 1964 Steel 42 ins. l.
- 76 Extended Figure 1964 Steel 30 ins. l.
- 77 Standing Figure 1964 Steel 36 ins. h.

**RUTHERFORD Ann**

Born Australia

- 78 Horse's Head Bronze 17½ ins. h.

**CERVELLI Enrico (1927-1960)**

Born Rome.

- 79 Totem Copper and Painted Wood 52½ ins. h.
- 80 Totem *illustrated* Copper and Painted Wood  
53 ins. h.

**BODEN Neville**

Born South Africa 1929. Studied Chelsea School of Art. Awarded Gregory Fellowship, Leeds University 1965.

- 81 Sculpture 1964 Steel and colour 67 ins. h.
- 82 Sculpture 1964 Copper and colour 12 ins. h.

**DENNING Antony**

Born 1929. Studied at Horsham School of Art. Teaches at Cranborne Chase School.

- 83 Warrior in Chains 1963 Steel 31 ins. h.
- 84 Construction 1962 Steel 21 ins. h.

**SYLVESTRI Lydia**

Born Italy 1929. Studied Brera Academy, Milan. Coaches at Bath Academy of Art, Corsham.

- 85 Torso of R.R.M. 1963 Bronze 32 ins. h.
- 86 Torso of P.R. 1962 Marmo Olivo Chiaro 17 ins. h.



**THURSBY Peter**

Born Salisbury 1930. Studied at Exeter College of Art.

- 87 Pipe 1964 Bronze 9 ins. h.
- 88 Table Tower 1964 Bronze 12½ ins. h.
- 89 Funnel Box 1964 Aluminium 14½ ins. h.

**WALL Brian**

Born 1931 London. Studied Luton School of Art. Head of Sculpture Department, Central School of Arts and Crafts. Included in *British Sculpture of the Sixties* at the Tate Gallery.

- 90 Three Circles 1964 Steel 54 ins. h.
- 91 Black Sculpture 1964 *illustrated* Steel 26 ins. h.

**KADISHMAN Manasche**

Born Israel 1932. Studied Jerusalem, Slade School of Art and St. Martin's School of Art. Now teaches Wimbledon School of Art.

- 92 The Negev 1964 *illustrated* Granite 49 ins. h.
- 93 Altar 1963 Bronze 10 ins. h.
- 94 Two Torsos 1963 Bronze 5 ins. h.

**ROGERS Thomas**

Born 1933. Studied in Canada, Paris and Leiden. Head of Art Department, Salesian College, Farnborough, Hampshire.

- 95 Totem Welded Steel 28 ins. h.
- 96 Reclining Figure Welded Steel 31 ins. l.

**ORION Ezra**

Born Israel 1934. Studied Bezalel School of Art, Jerusalem. At present at St. Martin's School of Art, London, under scholarship from the American Israel Cultural Foundation.

- 97 Space and Iron I 1964 24 ins. h.
- 98 Space and Iron II 1964 24 ins. h.
- 99 Space and Iron III 1964 18 ins. h.

**TYSOE Peter**

Born Bedford 1935.

- 100 Horizontal Form 1964 Steel and Glass 19½ ins. h.
- 101 Vertical Form I 1964 Steel and Glass 24½ ins. h.
- 102 Vertical Form II 1964 Steel and Glass 23 ins. h.

**KUMALO Sam**

Born South Africa 1936. Studied Polly Street Art Centre, Johannesburg.

- 103 Reclining Nude 1964 Bronze 12 ins. l.
- 104 Reclining Nude 1964 Terracotta 12 ins. l.

**PERLMAN Joel**

Born New York 1943. Studied at Cornell College and Central School of Arts and Crafts, London, since September 1964.

- 105 Go! I 1964 Welded Steel 24 ins. h.
- 106 Go! II 1964 *illustrated* Welded Steel 14 ins. h.
- 107 Three Maquettes for a Monument 1964 Bronze  
5½ ins. : 4 ins. : 4 ins. h.

until  
11 March     GIARDELLI relief constructions

Forthcoming Exhibition

16 March     JACK SMITH paintings  
                 PATRICK HAYMAN paintings

Works always available by

Archipenko	Hoffmeister	Moore
Ayrton	Hoskin	Mucha
Baj	Janecek	Nikitch
Bauchant	Kandinsky	Rabin
Calder	Kaplan	Schener
Campigli	Kinley	Severini
Cascella	Koenig	Sironi
Chagall	Konfar	Soucek
Clough	Lissitsky	Spyropolous
Dolenec	Lundquist	Jack Smith
Evensen	Magritte	Souza
Feiler	Miro	Vivin