



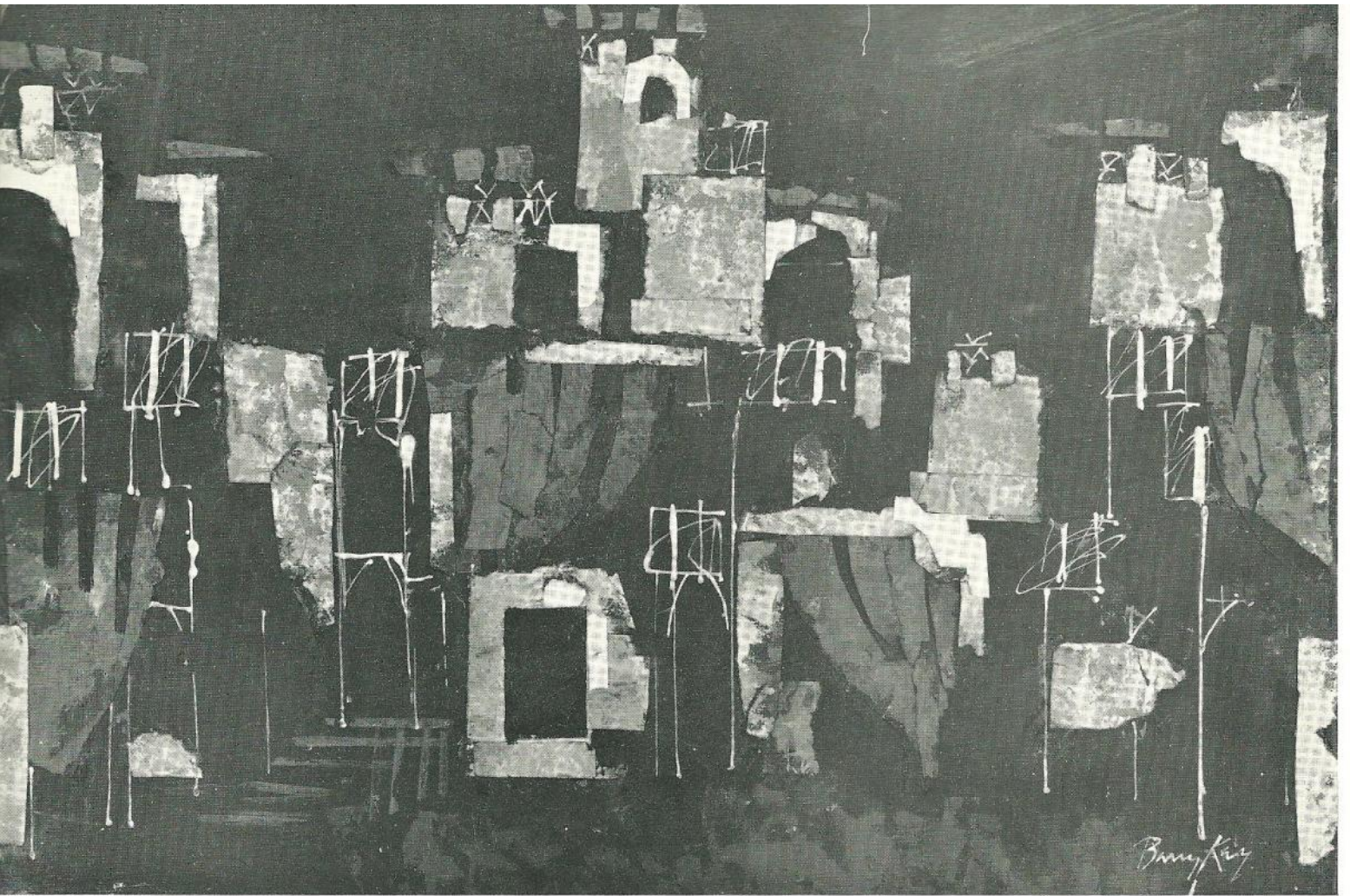
Barry Kay

stage designs

13 – 24 December 1965

Grosvenor Gallery

28/30 Davies Street London w1
telephone
Mayfair 0891
telegrams
Sevenartz London



No 8 Don Quixote: The Tavern

BARRY KAY

- 1932 Born Melbourne, Australia
Worked briefly in theatre
- 1951-3 Studied at the Academie Julian, Paris
- 1953- Returned to Australia and designed for the
Walter Gore Company
Held exhibitions in Melbourne, Perth and
Sydney
- 1956 Came to England
One of the principal designers for Western
Theatre Ballet for which his ballets include *The
Prisoners* and *Chiaroscuro*

Principal Productions

Old Vic: *Measure for Measure*

Sadlers Wells Opera: *The Cunning Little Vixen* (Janacek)

Royal Shakespeare Company, Aldwych Theatre: *Victor*
(Vitrac)

Royal Ballet Company: *Images of Love* (Macmillan)

Also designs for the Royal Swedish Ballet, Brussels
Opera House; and the Edinburgh, Aldeburgh, Bath and
City of London Festivals

Forthcoming Productions

~~Australian Ballet Company: *Don Quixote* (Nureyev)~~

Vienna State Opera: *Tancredi* (Nureyev)

DON QUIXOTE

Models

- | | | | |
|---|-------|-----------|----------------------|
| 1 | Act 1 | Scene I | Prologue |
| 2 | Act 2 | Scene I | The Gypsy Encampment |
| 3 | Act 2 | Scene III | The Tavern |

Set Designs

- | | | | |
|------|-----------------|-----------|----------------------|
| 4 | Act 1 | Scene I | Prologue |
| 5 | Act 1 | Scene II | Dulcinea's Garden |
| 6 | Act 1 | Scene III | The Port |
| 7 | Act 2 | Scene I | The Gypsy Encampment |
| 8 | Act 2 | Scene III | The Tavern |
| 9-22 | Costume Designs | | |

TANCREDI

23/24 Projects for Set

IMAGES OF LOVE

- | | |
|-------|-----------------|
| 25 | Model of Set |
| 26 | Set Design |
| 27/32 | Costume Designs |

VICTOR

- | | |
|-------|-----------------|
| 33 | Act Drop |
| 34-39 | Costume Designs |

NO WHY

- | | |
|----|------------|
| 40 | Set Design |
|----|------------|

until 15 January ART NOUVEAU

Opening 6 January BRANDSTATTER paintings

18 January CERVELLI sculpture and paintings

Always available:

Archipenko	Fremund	Magritte
Ayrton	Giardelli	Miro
Baj	Goncharova	Moore
Biasi	Gutfreund	Mucha
Calder	Hoffmeister	Neizvestny
Campigli	Janecek	Rabin
Cascella	Kandinsky	Brian Robins
Chagall	Kaplan	Schener
Chang Dia-Chien	Kinley	Severini
Chi Pai-shih	Koenig	Silvestri
Clough	Konfar	Sironi
Dolenec	Larionov	Jack Smith
Evensen	Lies	Souza
Favorsky	Lissitsky	Wall
Feiler	Lorri	Weschke