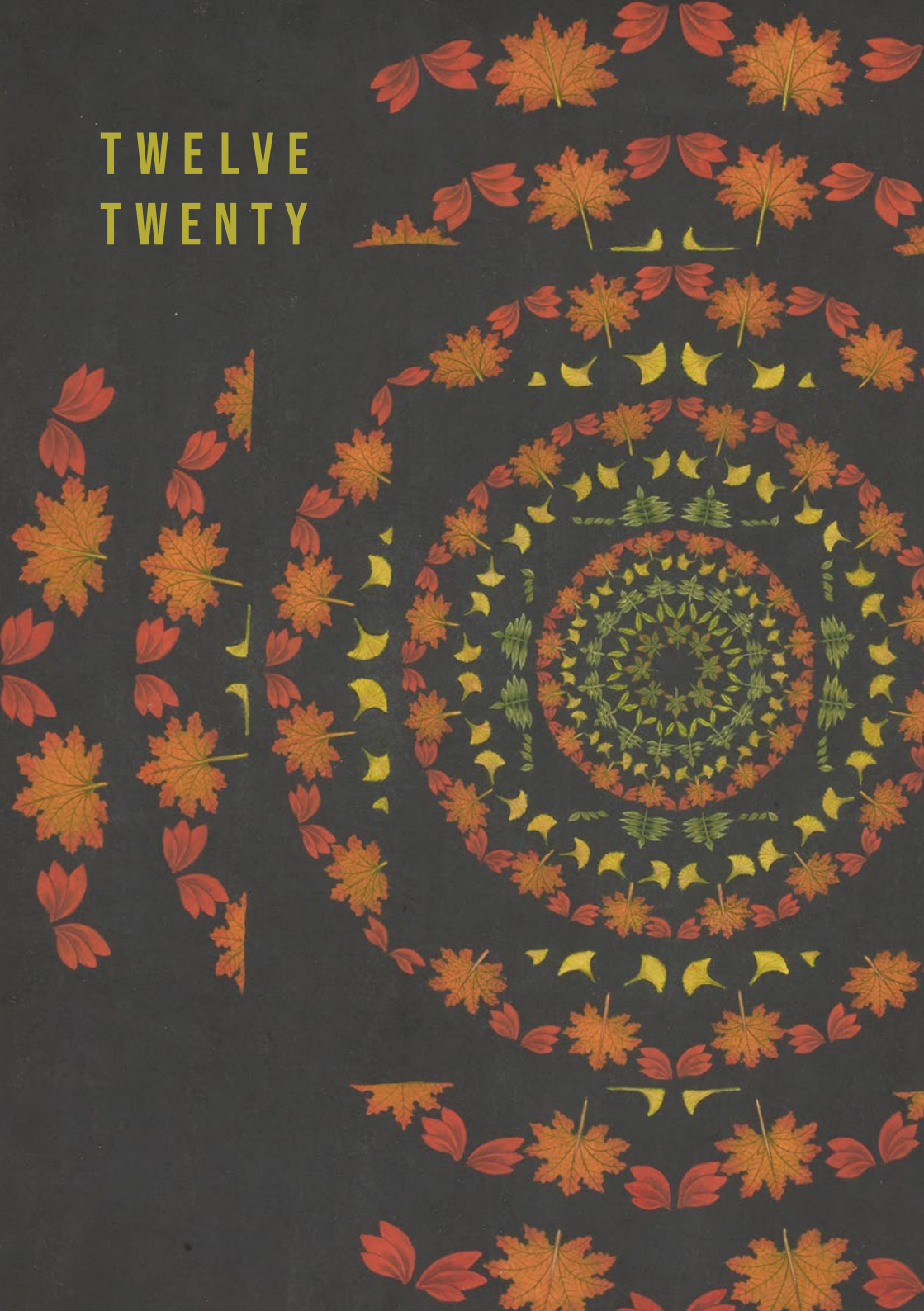


TWELVE  
TWENTY





# TWELVE TWENTY

11 - 19 DECEMBER

## HOURS

Friday 11th: 10am-7pm

Saturday 12th & 19th: 12-4pm

Monday – Friday 14th-18th: 10am-5pm

## ENQUIRIES

[art@grosvenorgallery.com](mailto:art@grosvenorgallery.com)

+44(0)207 484 7979

**Grosvenor  
Gallery**

[grosvenorgallery.com](http://grosvenorgallery.com)



*Montage/Instrumental - Satyajit Ray*

*When I leave Berlin – Wizz Jones*

*Umaningi Bona – Hugh Masekela*

*The Swimming Song – Loudon Wainwright*

*Synthesizer – Faithless*

*The Way You Dream – Michael Stipe, Asha Bhosle*

*Hong Kong – Gorillaz*

*Aai Mausam Bada Beimaan Hai – Mohammed Rafi*

*Satellite of Love – Lou Reed*

*Symphony No.3, Op.36, Symfonia piesni zalosnych, II, Lento e Largo –*

*Henryk Górecki*

*Desaparecido – Manu Chao*

*Boreal Forest – Mammal Hands*

*Feliz Navidad – José Feliciano*

*Funky Kingston – Toots & The Maytals*

*We Wish You a Merry Christmas – John Denver and The Muppets*

**SCAN THE CODE IN SPOTIFY**

**TO DOWNLOAD OUR FESTIVE PLAYLIST**



**INTRODUCTION**

To close out this bizarre year we're holding one more show, featuring paintings, works on paper, sculpture and editions by some of the artists we work with. Works will be available to view at the gallery, with a few exceptions, which are available to view in Park Royal by appointment. These are marked in the catalogue.

Now that lockdown 2 is behind us, we look forward to welcoming you back to the gallery in the coming weeks and months. A few exhibitions from our 2021 programme are listed at the back of the catalogue, with more to be confirmed. Opposite you'll see a playlist, which has been compiled with the help of some of the artists in the show. Some of these songs have been on repeat in their studios and some are the soundtrack to our lockdown. Scan the code opposite in Spotify or find the link on the exhibition page of our website. It's eclectic. We hope you enjoy it...

Happy holidays from all of us at Grosvenor Gallery, and here's to a bright 2021.



**I. RASHEED ARAEEN**

**b. 1935**

*Multi-Red*, 1968-2018

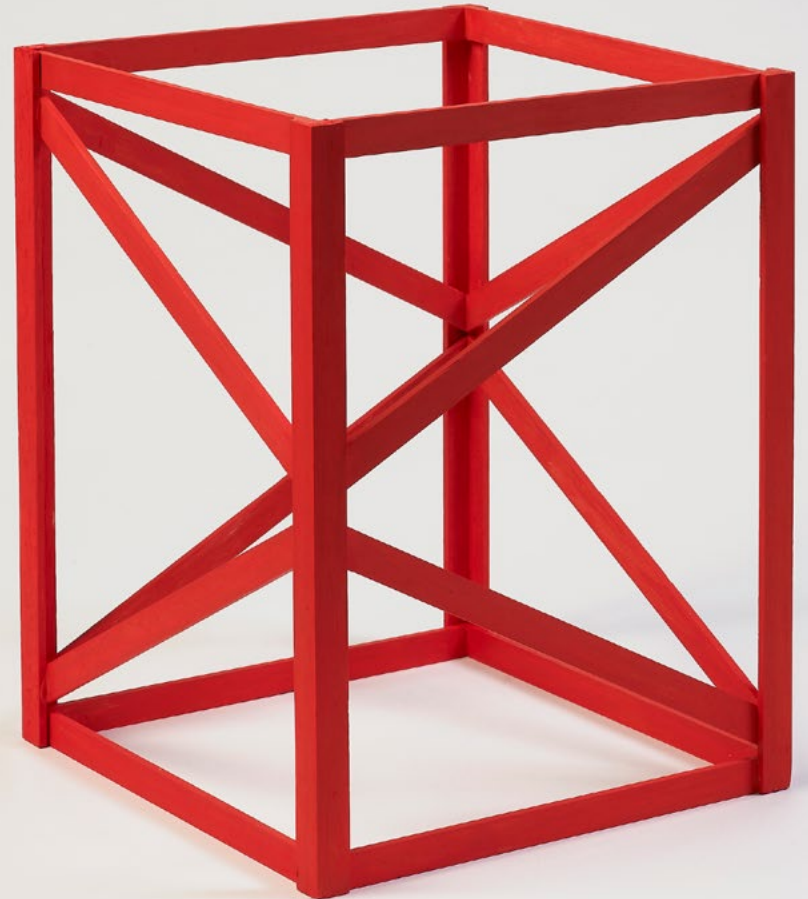
Acrylic on wood

30 x 23 x 23 cm

11 3/4 x 9 1/8 x 9 1/8 in

Edition of 50

£ 4,500.00



Previous page: Portrait of Rasheed during the 1975 exhibition 'Artists for Democracy'

**2. FAIZA BUTT**

**b. 1973**

*Morphosis I*, 2016

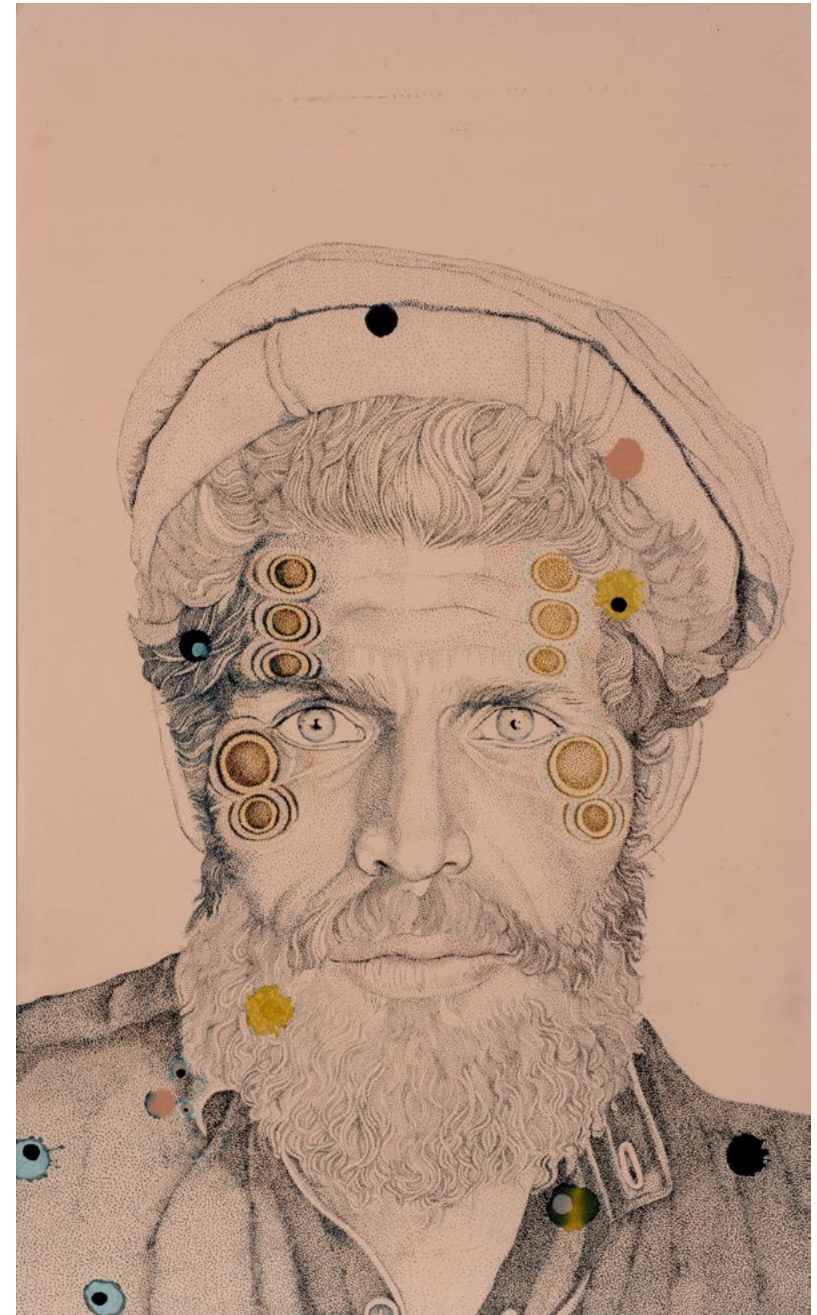
Ink on polyester coated paper

51 x 31 cm

20 1/8 x 12 1/4 in

£ 3,500.00

Below: Nos. 2 & 3 in Faiza's studio, 2017



**3. FAIZA BUTT**

**b. 1973**

*Morphosis III*, 2016

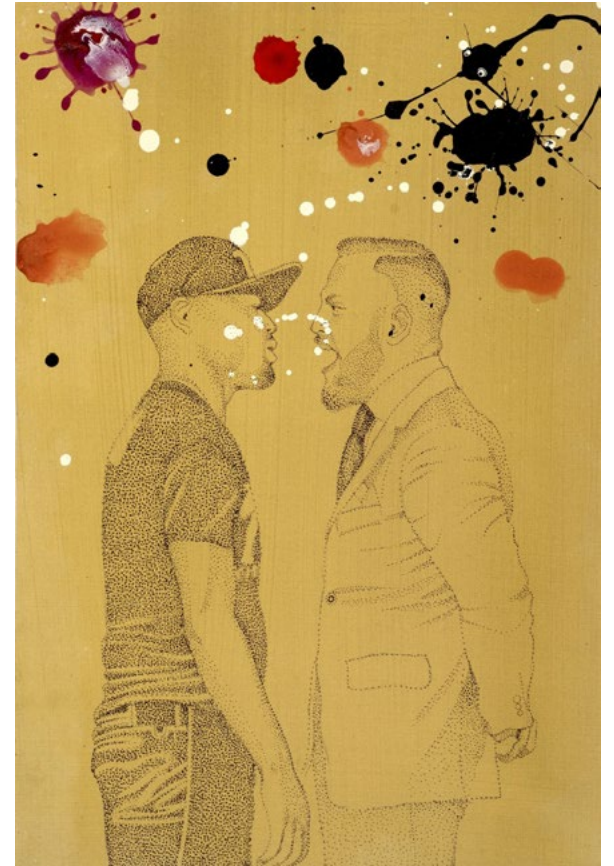
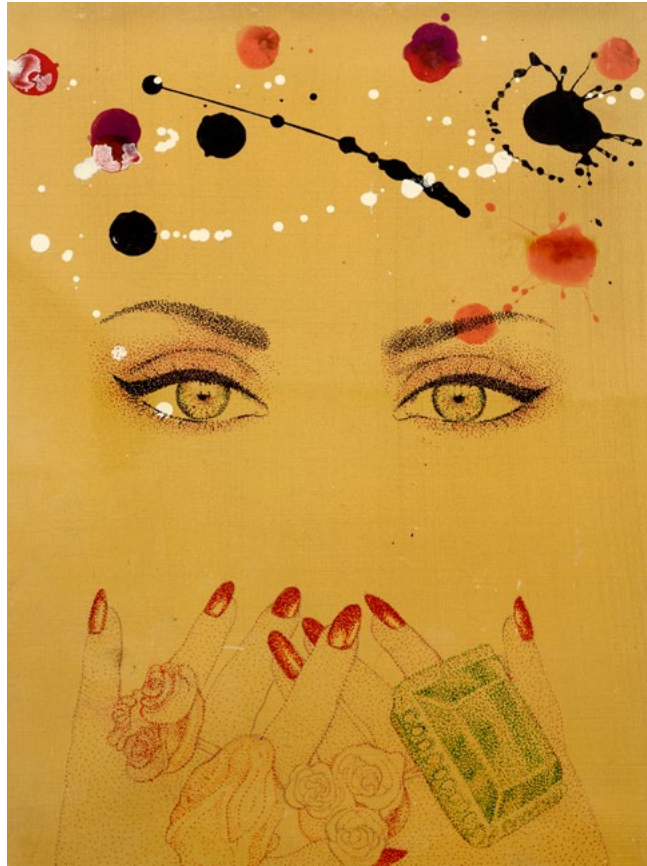
Ink on polyester coated paper

51 x 31 cm

20 1/8 x 12 1/4 in

£ 3,500.00





**4. FAIZA BUTT**

**b. 1973**

*Closer to God on Gold, Triptych, 2017*

Ink on polyester film

30 x 20 cm (each)

11 3/4 x 7 7/8 in

£ 3,500.00



**5. NOOR ALI CHAGANI**

**b. 1982**

*Untitled, 2017*

Miniature hand-made bricks, cement and  
acrylic paint

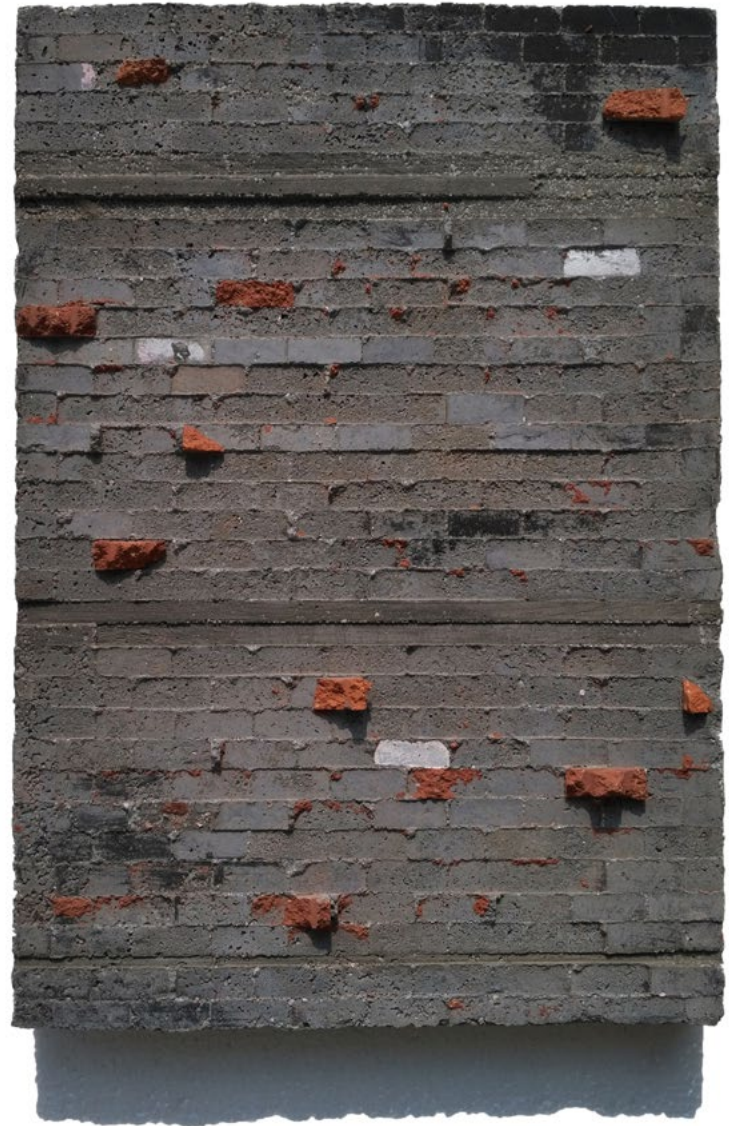
38.1 x 26.7 x 1.3 cm

15 x 10 1/2 x 1/2 in

**EXHIBITIONS**

*Multiple Narratives, 8 Contemporary Artists  
from Pakistan, Grosvenor Gallery, London,  
29 January - 16 February 2018*

£ 3,000.00



## 6. SUNOJ D

b.1979

*Urban Farmland Project, 2009*

Acrylic, pencil and pen on acid free paper

Signed on the reverse

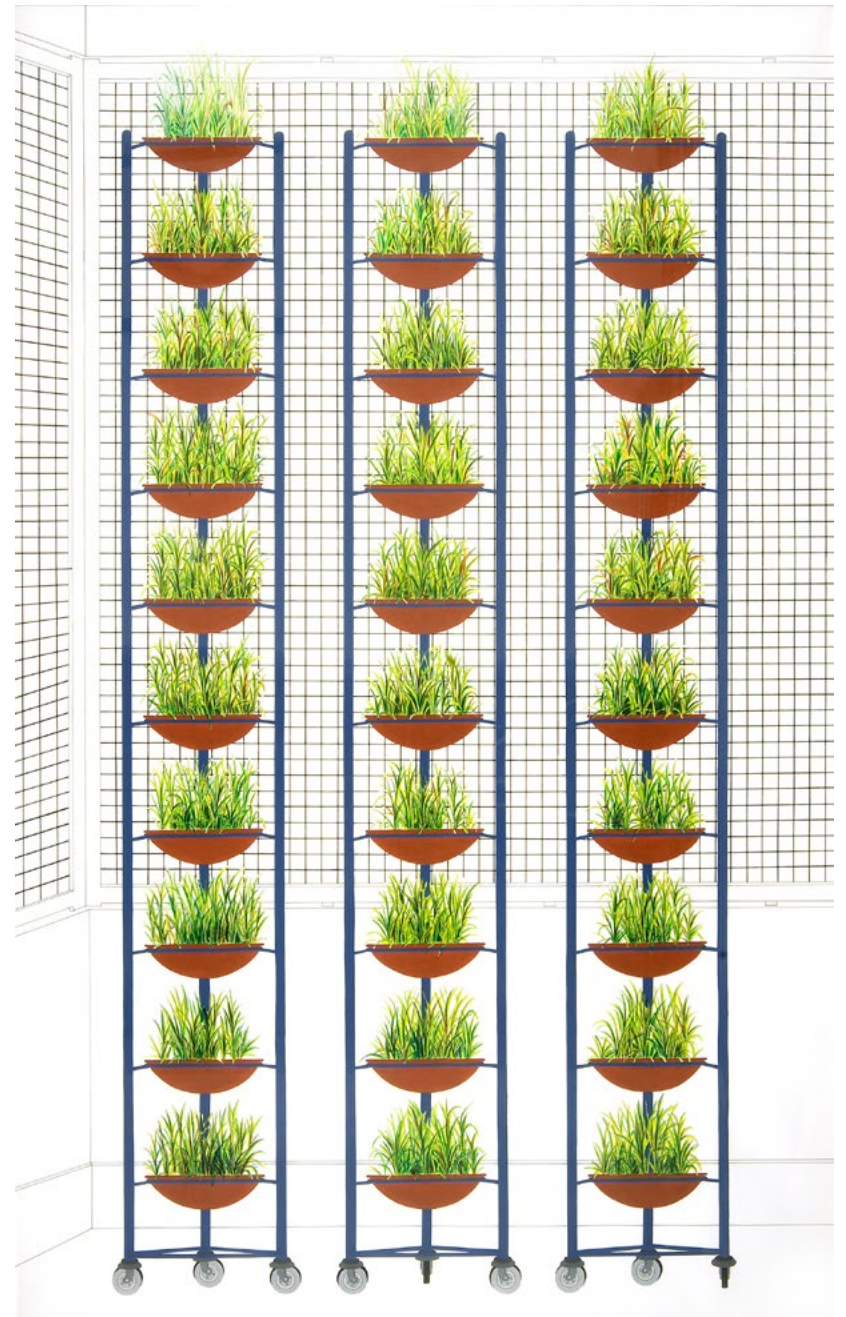
215.9 x 134.6 cm

85 x 53 in

### EXHIBITIONS

*Between Land and Sky*, Grosvenor Gallery,  
London, 14 July - 14 August 2009, No. 1

£ 1,500.00



Viewing by appointment in Park Royal

**7. SUNOJ D**

**b.1979**

*Urban Farmland Project, 2009*

Watercolour and pencil on paper

Signed on the reverse

127 x 86 cm

50 x 33 7/8 in

£ 1,000.00



Viewing by appointment in Park Royal

## 8. SUNOJ D

b.1979

*Fountain, 2009*

Acrylic on linen

Signed on the reverse

152.4 x 116.8 cm

60 x 46 in

### EXHIBITIONS

*Between Land and Sky*, Grosvenor Gallery,  
London, 14 July - 14 August 2009, No. 11

£ 2,600.00



Viewing by appointment in Park Royal

**9. OLIVIA FRASER**

**b. 1965**

*Autumn Yantra I*, 2020

Stone pigments, Arabic gum and Gold  
leaf on handmade Sanganer paper

26 x 26 cm

10 1/4 x 10 1/4 in

£ 2,600.00



**10. OLIVIA FRASER**

**b. 1965**

*Autumn Yantra II*, 2020

Stone pigments, Arabic gum and Gold  
leaf on handmade Sanganer paper

26 x 26 cm

10 1/4 x 10 1/4 in

£ 2,600.00



II. OLIVIA FRASER

b. 1965

*Hamsa*, 2020

Stone pigments, Arabic gum and Gold  
leaf on handmade Sanganer paper

26 x 26 cm

10 1/4 x 10 1/4 in

£ 2,800.00



**12. OLIVIA FRASER**

**b. 1965**

*Breath*, 2020

Triptych

Stone pigments and Arabic  
gum on handmade Sanganeer  
paper

Centre: 26 x 26 cm

(10 1/4 x 10 1/4 in)

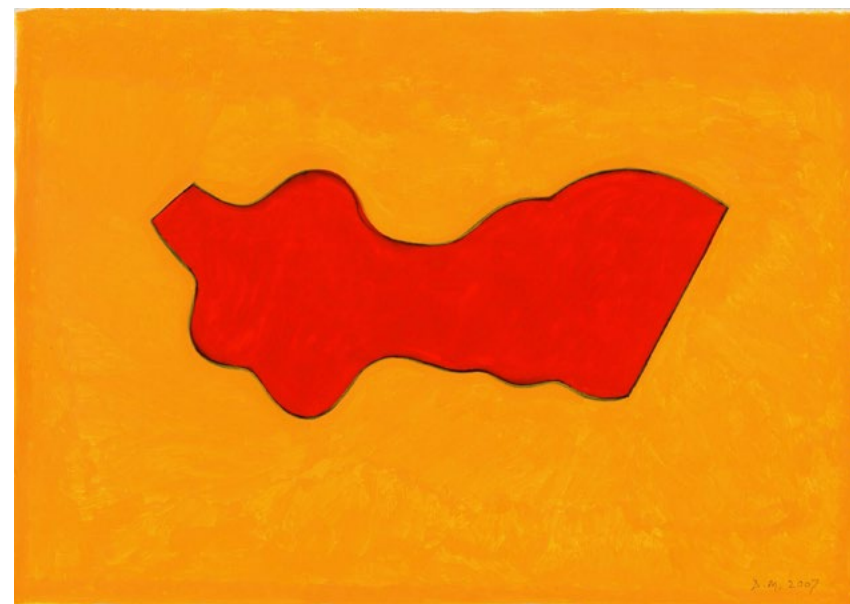
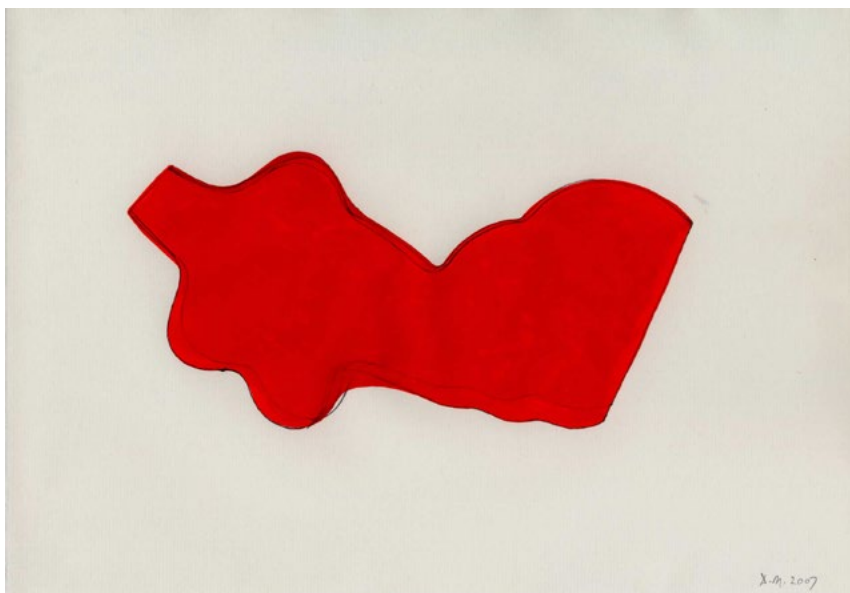
Left/Right: 26 x 13 cm

(10 1/4 x 5 1/8 in)

£ 4,800.00







**13. DHRUVA MISTRY**

**b. 1957**

*Something Else - 2*, 2007

Gouache on paper

Signed and dated lower right

21 x 29.7 cm

8 1/4 x 11 3/4 in

£ 450.00

This work is sold unframed

**14. DHRUVA MISTRY**

**b. 1957**

*Something Else - 3*, 2007

Gouache on paper

Signed and dated lower right

21 x 29.7 cm

8 1/4 x 11 3/4 in

£ 450.00

This work is sold unframed

**15. DHRUVA MISTRY**

**b. 1957**

*Torso-17, 2007*

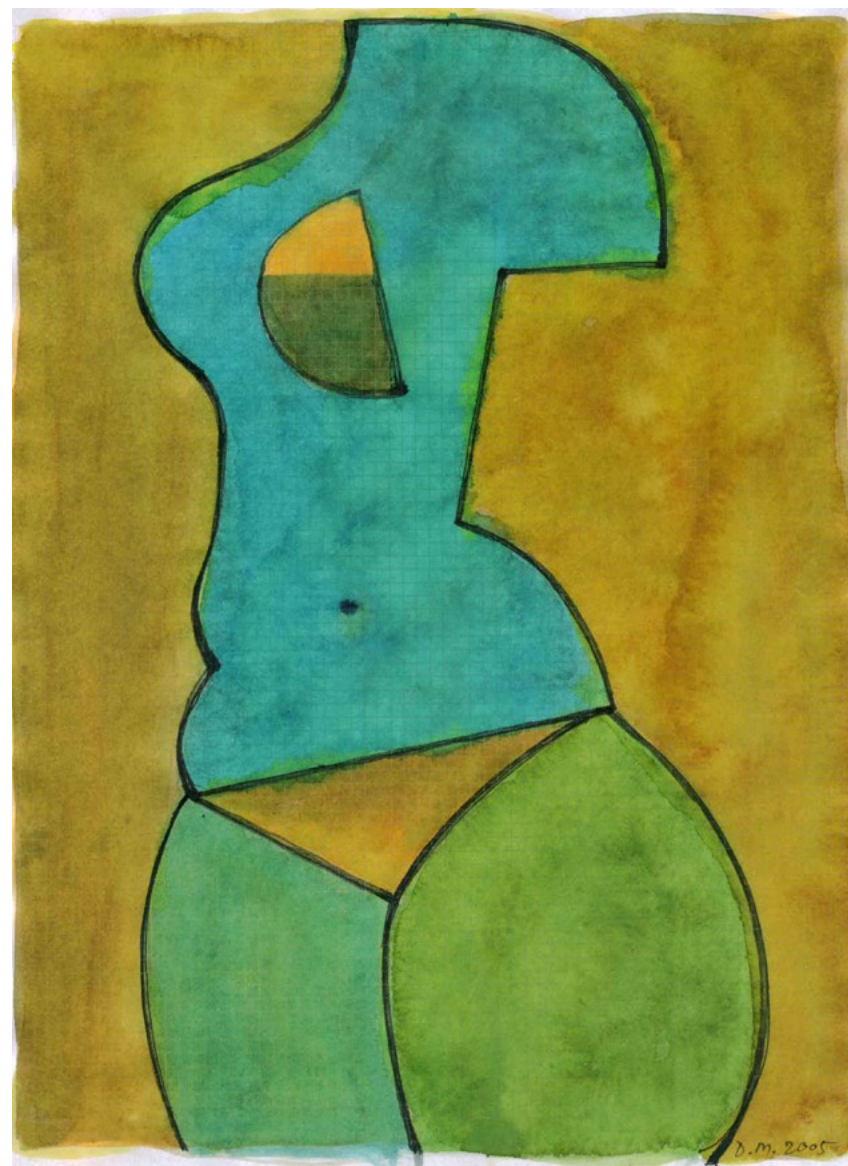
Gouache on paper

Signed and dated lower right

29.7 x 21 cm

11 3/4 x 8 1/4 in

£ 450.00



This work is sold unframed

**16. DHRUVA MISTRY**

**b. 1957**

*Maya Medallion II, 2010*

Acrylic and varnish on board

Signed and dated on the reverse

Width 54 cm (21 1/4 in)

**EXHIBITIONS**

*Royal Academy Summer Show, London, 2010*

£ 1,800.00



17.

**SHIBU NATESAN**

b. 1966

*Kilchoan, Adnamurchan, Scotland, 2019*

Oil on panel

Signed, dated and titled on the reverse

29 x 39 cm

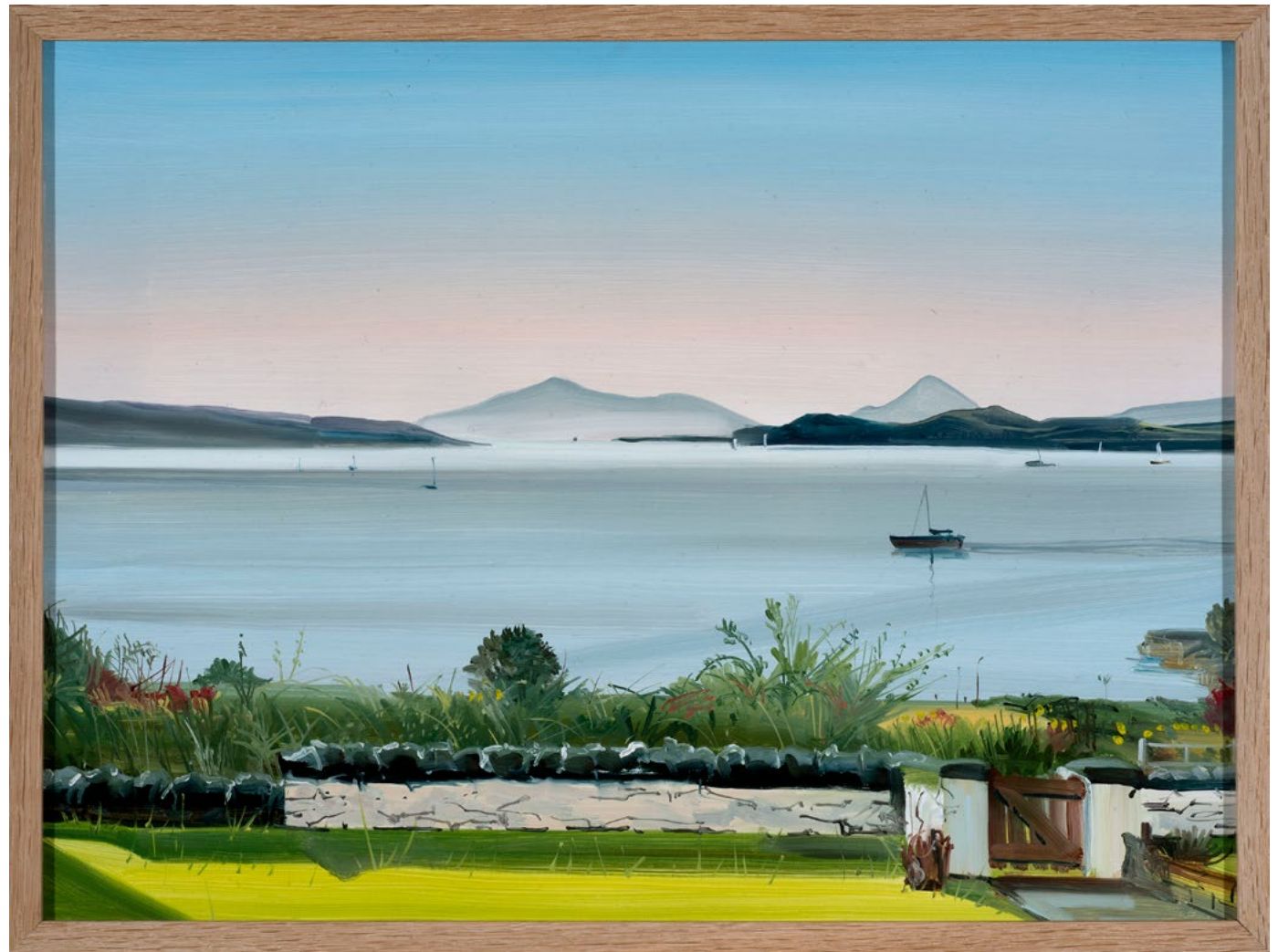
11 3/8 x 15 3/8 in

**EXHIBITIONS**

*Landscape, Grosvenor Gallery, London,*

7 - 20 March 2020

£ 5,000.00



**18.**  
**SHIBU NATESAN**

**b. 1966**

*A Tailor on Rooftop, Srikalahasti, Andhra Pradesh, India, 2019*

Oil on panel

Signed, dated and titled on the reverse

29 x 39 cm

11 3/8 x 15 3/8 in

**EXHIBITIONS**

*Landscape, Grosvenor Gallery, London,  
7 - 20 March 2020*

£ 5,000.00



19.  
**SHIBU NATESAN**

b. 1966

*Sahastralinga, Karnataka, 2019*

Watercolor on paper

Signed, dated and titled on the reverse

15 x 30 cm

5 7/8 x 11 3/4 in

£ 1,600.00



20.

**SHIBU NATESAN**

b. 1966

*Varkala Beach, 2019*

Watercolor on paper

Signed, dated and titled on the reverse

15 x 30 cm

5 7/8 x 11 3/4 in

£ 1,600.00



**21. ELISABETH DEANE**

**b. 1985**

*Petals and Water*, 2020

Italian gold leaf, natural pigments and Arabic  
gum on handmade Indian hemp paper

50 x 52 cm

19 3/4 x 20 1/2 in

£ 1,800.00



**22. ELISABETH DEANE**

b. 1985

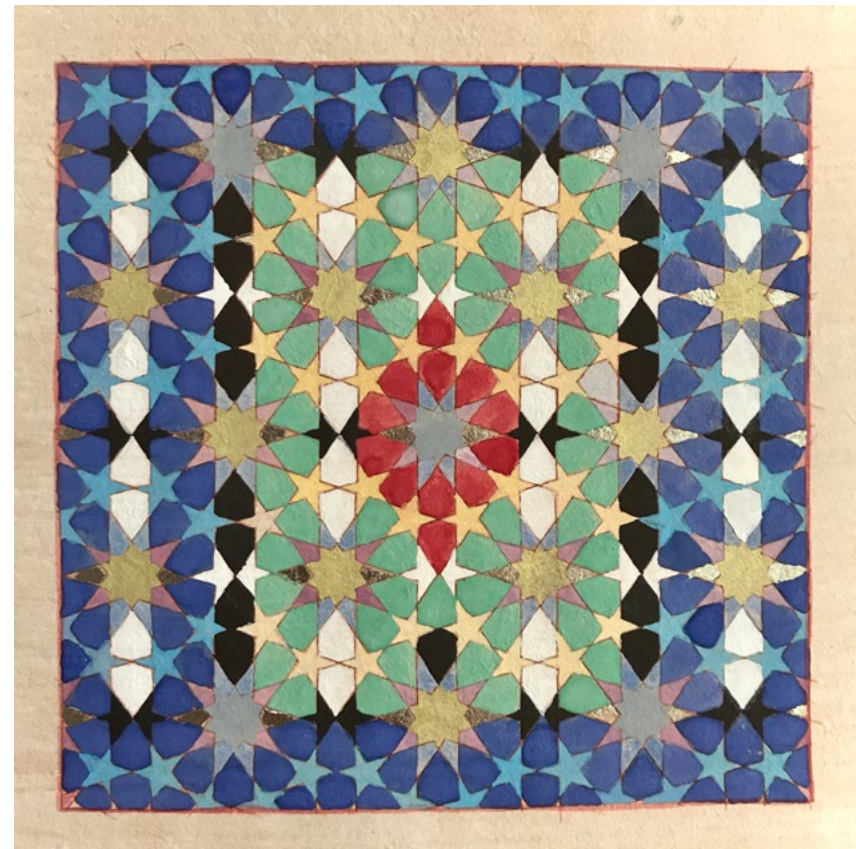
*Diamond Rose*, 2020

Gold leaf, platinum leaf, natural pigments  
and Arabic gum on antique Indian paper

11.1 x 11.3 cm

4 3/8 x 4 1/2 in

£ 650.00



**23. ELISABETH DEANE**

b. 1985

*Anastasi*, 2020

Italian gold leaf, platinum leaf,  
natural pigments and Arabic gum  
on handmade Indian hemp paper

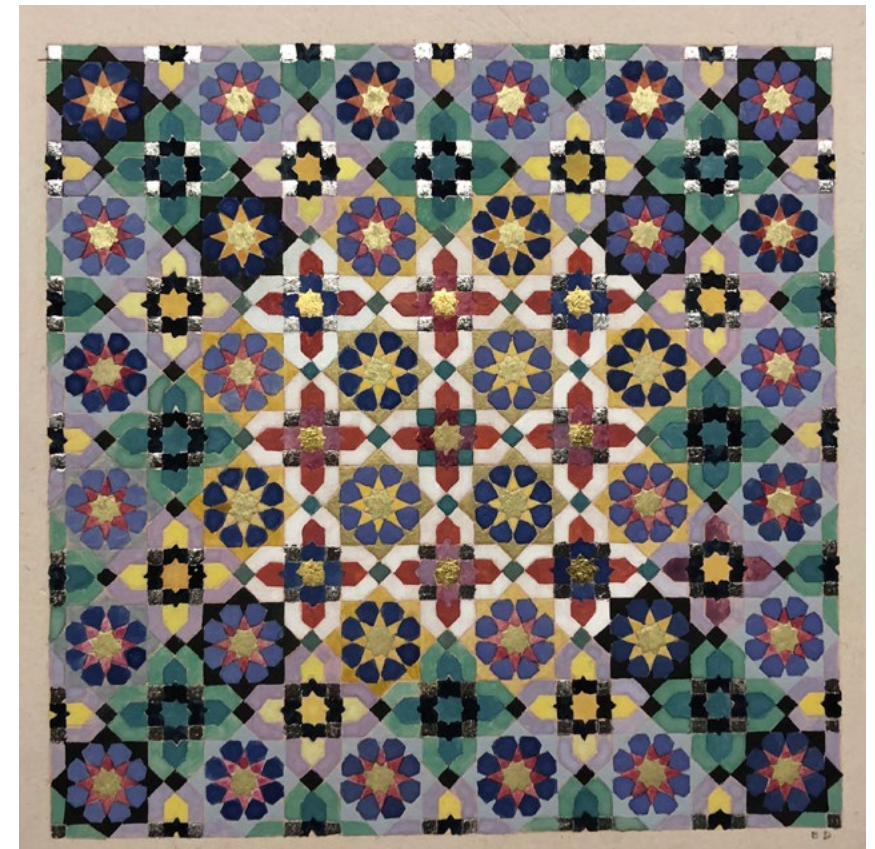
15 x 15 cm

5 7/8 x 5 7/8 in

**EXHIBITIONS**

*Aspects of Geometry*, Grosvenor  
Gallery, London, 23 March - 17  
May 2020

£ 850.00





**24. ELISABETH DEANE**

**b. 1985**

*Stars of Mount Noor*, 2019

Italian gold leaf, platinum leaf, natural  
pigments and Arabic gum on handmade  
Indian hemp paper

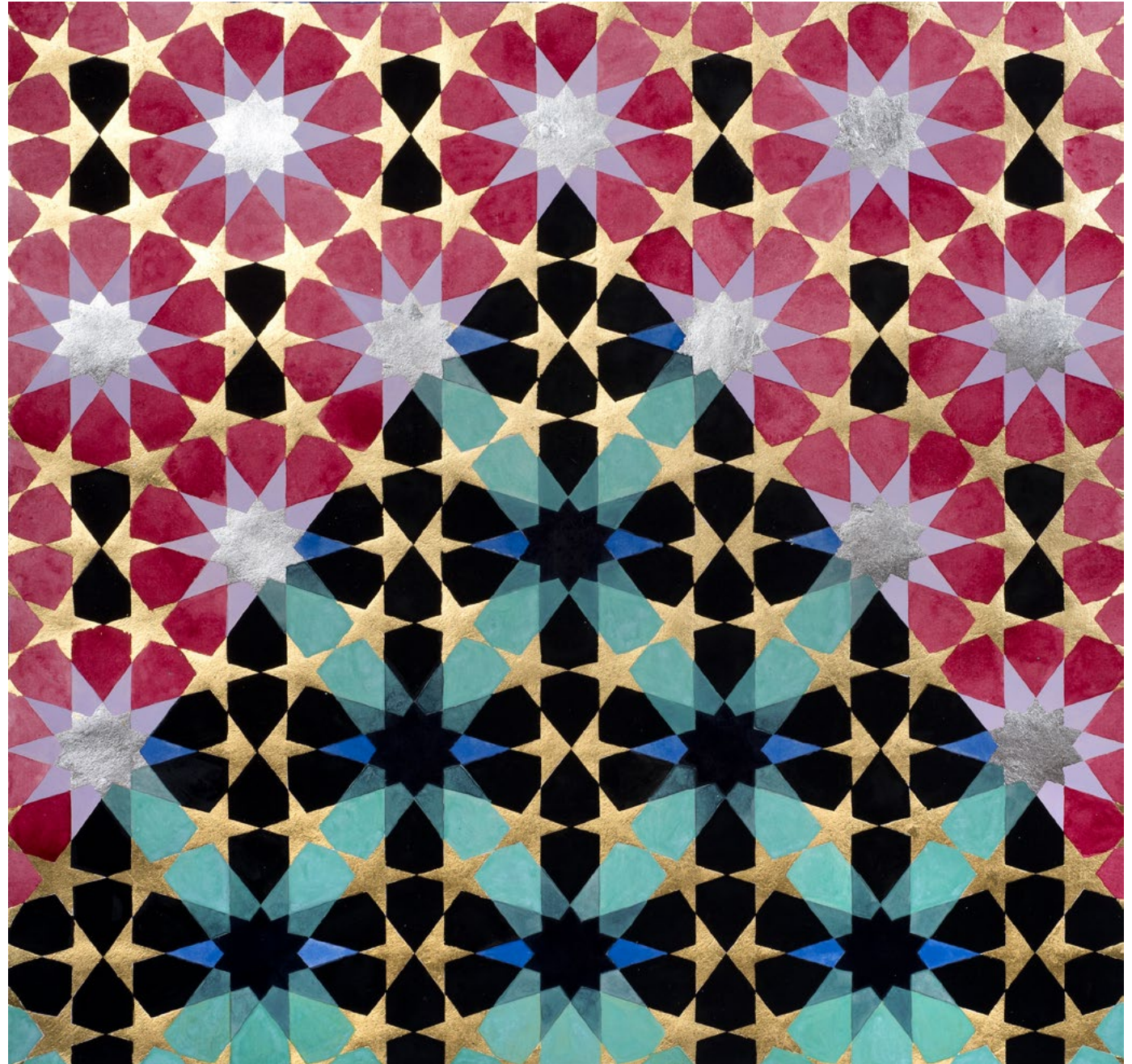
50 x 49.2 cm

19 3/4 x 19 3/8 in

**EXHIBITIONS**

*Rhythmic Measures*, Grosvenor Gallery,  
London, 28 November - 20 December  
2019

£ 1,500.00



**25. ANGELI SOWANI**

**b. 1960**

*Sepoy Chatta Singh VC*, 2019

Acrylic on canvas

Titled on the reverse

60 x 60 cm

23 5/8 x 23 5/8 in

£ 2,000.00

*“Chatta Singh, No 3398, Sepoy, 9th Bhopal Infantry, Indian Army. For most conspicuous bravery and devotion to duty in leaving cover to assist his commanding officer, who was lying wounded and helpless in the open. Sepoy Chatta Singh bound up the officer’s wound, and then dug cover for him with his entrenching tool, being exposed all the time to very heavy rifle fire. For five hours until nightfall he remained beside the wounded officer, shielding him with his own body on the exposed side. He then, under cover of darkness, went back for assistance, and brought the officer into safety.”*

Chatta Singh was born in Tilsanda, Cawnpore, India, in 1887, son of a Ishu Singh, cultivator. He was educated at Tilsanda Village School, and joined the army on 5 July 1911, as a sepoy in the 9th Bhopal Infantry. He serves in the European War, and was awarded the Victoria Cross. He died on 28th March 1961.



**26. ANGELI SOWANI**

**b. 1960**

*Lance Naik Lala VC, 2019*

Acrylic on canvas

Titled on the reverse

60 x 60 cm

23 5/8 x 23 5/8 in

£ 2,000.00

*“His Majesty the King has been graciously pleased to confer the Victoria Cross on No. 510, Lance-Naik Lala, 41st Dogras, Indian Army for most conspicuous bravery. Lala was 33 years old... when he dragged a British officer to a shelter and bandaged his wounds. Then, hearing the cries of his adjutant, who was also lying wounded only 100 yards from the enemy, he crawled to him; staying with him until nightfall, he used his own clothes to keep him warm. After dark he carried first one man then the other to safety.*

*“Lala was born in the village of Parol in the district of Hamirpur, Kangra, Punjab, son of Dinga (Maila caste), Zamindar, 1st Grade. He had no schooling, but could read and write Hindi. Joined the Indian Army in 1901 and served in the European War from 1914.”*

He died from polio on 23 March 1927. His last words were ‘We fought true’.



**27. MOHAMMAD ALI TALPUR**

**b. 1976**

*Untitled - 9, 2017*

Acrylic on canvas

63.5 x 53.3 cm

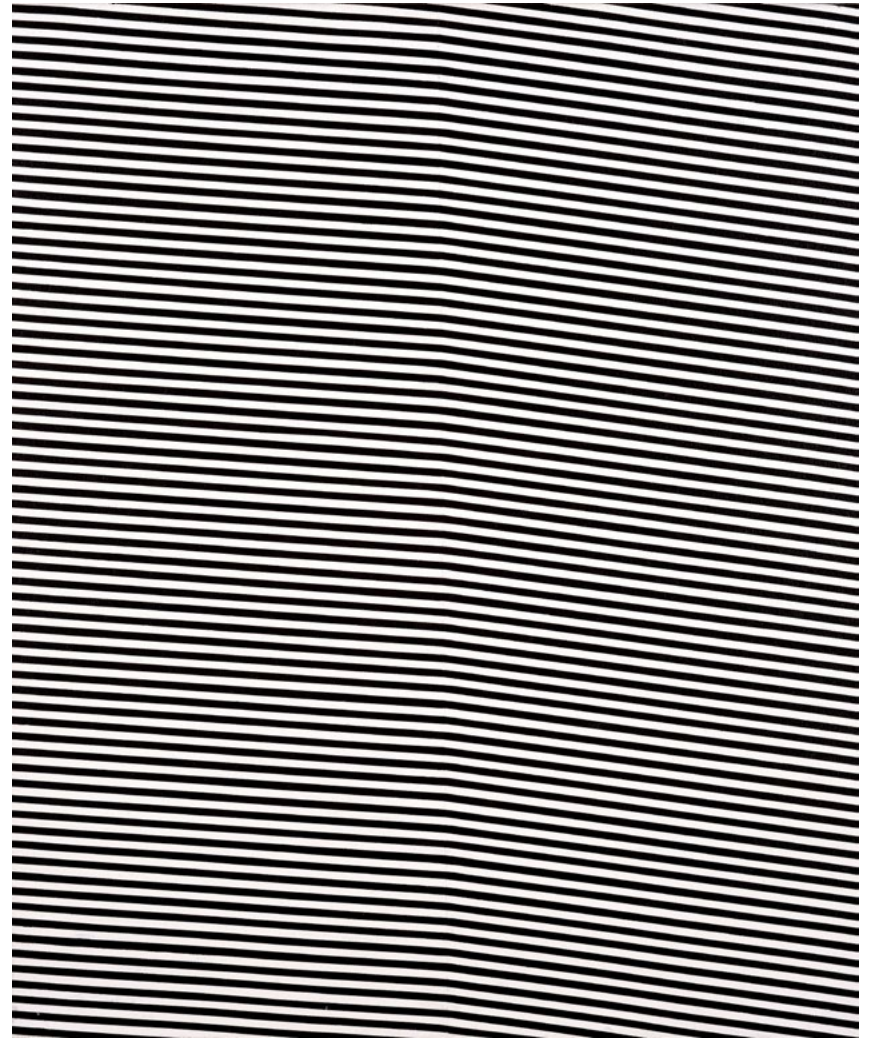
25 x 21 in

**EXHIBITIONS**

*Mohammad Ali Talpur, Site Specific,*

Austin Desmond, London, Jan. - Feb. 2018

£ 5,000.00



**28. MOHAMMAD ALI TALPUR**

**b. 1976**

*Untitled - 10, 2017*

Acrylic on canvas

63.5 x 53.3 cm

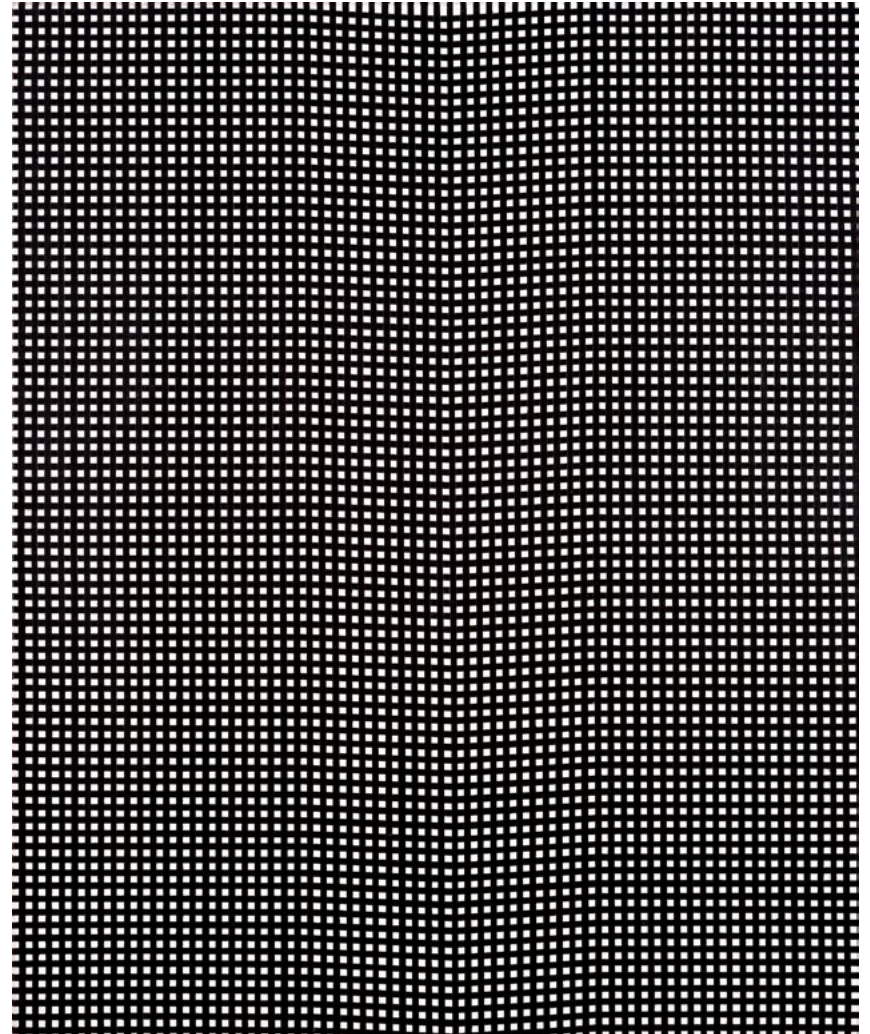
25 x 21 in

**EXHIBITIONS**

*Mohammad Ali Talpur, Site Specific,*

Austin Desmond, London, Jan. - Feb. 2018

£ 5,000.00



**29. MOHAMMAD  
ALI TALPUR**

**b. 1976**

*Untitled (Alif Series,  
11), 2020*

Ink on paper

42 x 29 cm

16 1/2 x 11 7/16 in

£ 1,500.00



**30. MOHAMMAD  
ALI TALPUR**

**b. 1976**

*Untitled (Alif Series,  
10), 2020*

Ink on paper

42 x 29 cm

16 1/2 x 11 7/16 in

£ 1,500.00



**31. MOHAMMAD  
ALI TALPUR**

**b. 1976**

*Untitled (Alif Series,  
1), 2020*

Ink on paper

37.5 x 27.5 cm

14 3/4 x 10 7/8 in

£ 1,500.00



**32. MOHAMMAD  
ALI TALPUR**

**b. 1976**

*Untitled (Alif Series,  
2), 2020*

Ink on paper

37.5 x 27.5 cm

14 3/4 x 10 7/8 in

£ 1,500.00



**33. PRIYANTHA UDAGEDARA**

**b. 1975**

*Garden of Earthly Delight XI*, 2016  
Acrylic and collage  
on paper  
32.5 x 50 cm  
12 3/4 x 19 3/4 in

**EXHIBITIONS**

*Priyantha Udagedara, Garden of Earthly Delights*, Grosvenor Gallery, London, 16 – 30 September 2016

£ 375.00



**34. PRIYANTHA UDAGEDARA**

**b. 1975**

*Garden of Earthly Delight III*, 2016  
Acrylic and collage on canvas  
160 x 120 cm  
63 x 47 1/4 in

**EXHIBITIONS**

*Priyantha Udagedara, Garden of Earthly Delights*, Grosvenor Gallery, London, 16 – 30 September 2016

£ 2,500.00



**35. Zimbiri**

**b. 1991**

*Head in a Box*, 2020

Saa-tshen on Rhay-shing  
(Earth paint on canvas)

Signed on the reverse

60.9 x 60.9 cm

24 x 24 in

£ 1,800.00

**EXHIBITIONS**

*Zimbiri*, Grosvenor Gallery, London,

30 October - 20 November 2020





**36. OLIVIA FRASER**  
**b. 1965**

*Blue Lotus*, 2020  
Giclée print on epon  
enhanced matt paper  
Signed, dated, titled  
and numbered from  
an edition  
of 100  
Image size:  
63.5 x 63.5 cm  
(25 x 25 in)

£350.00 (unframed)



**37. OLIVIA FRASER**  
**b. 1965**

*Golden Lotus*, 2018  
Giclée print on  
310gsm Hahnemühle  
German Etching  
Paper  
Signed, titled and  
numbered from an  
edition of 100  
Image size:  
63.5 x 63.5 cm  
(25 x 25 in)

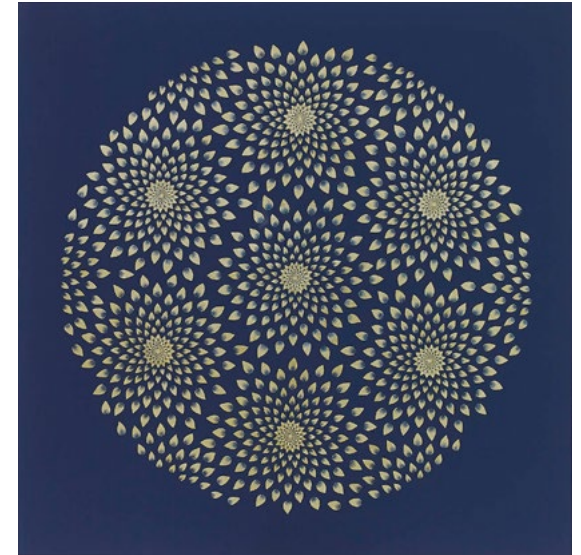
£400.00 (unframed)



**38. OLIVIA FRASER**  
**b. 1965**

*Sun*, 2013  
Giclée print on  
308gsm Hahnemühle  
Photo Rag  
Signed, titled and  
numbered from an  
edition of 50  
Image size:  
54 x 54 cm  
21 1/4 x 21 1/4 in

£400.00 (unframed)

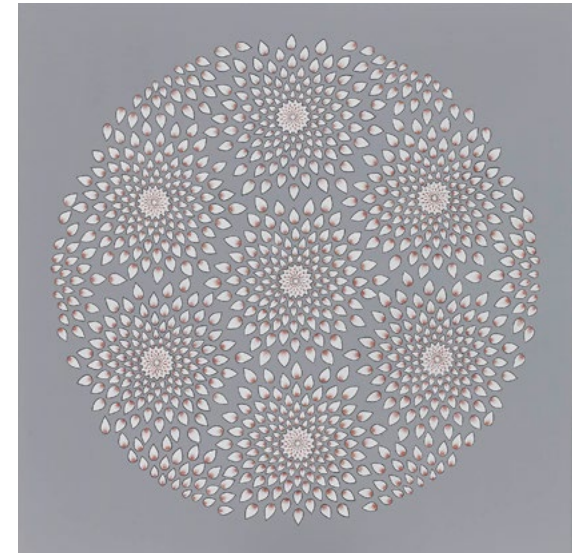


**39. OLIVIA FRASER**  
**b. 1965**

*Moon*, 2013  
Giclée print on  
308gsm Hahnemühle  
Photo Rag  
Signed, titled and  
numbered from an  
edition of 50  
Image size:  
54 x 54 cm  
21 1/4 x 21 1/4 in

£ 400.00 (unframed)

As a diptych:  
£ 750.00 (unframed)



**40. OLIVIA FRASER**  
**b. 1965**

*Blue and Red Dawn,*  
2012

Screenprint on  
410gsm Somerset tub  
size paper

Signed, dated, titled  
and numbered from  
an edition of 100  
Image size (each):  
77.4 x 75.8 cm  
30 1/2 x 29 7/8 in

As a diptych:  
£ 750.00 (unframed)



**41. OLIVIA FRASER**  
**b. 1965**

*Krishna I, II & III,* 2010

Giclée print on paper  
Signed, dated, titled & numbered  
from an edition of 100

Image size (each):  
68.5 x 45.7 cm  
27 x 18 in

As a triptych: £ 500.00 (unframed)

£ 200.00 each (unframed)  
Individual editions of Krishna I  
& III (red/blue) available



**42. OLIVIA FRASER**  
**b. 1965**

*Banyan Tree*, 2010  
Giclée print on paper  
Signed, dated, titled  
and numbered from  
an edition of 100  
Image size:  
68.5 x 45.7 cm  
27 x 18 in

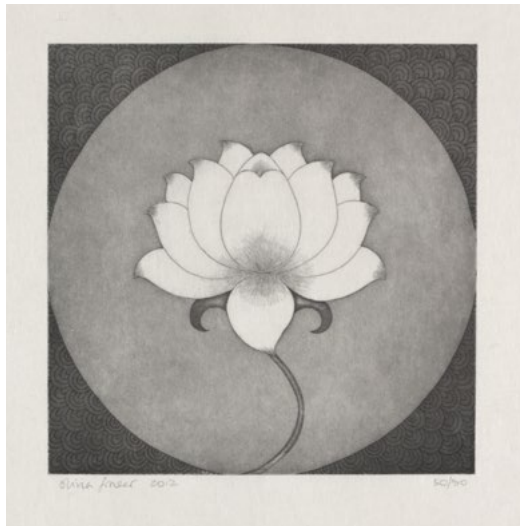
£200.00 (unframed)



**43. OLIVIA FRASER**  
**b. 1965**

*Lotus*, 2012  
Etching on Japanese  
rice paper  
Signed, dated and  
numbered from an  
edition of 50  
Image size:  
38 x 36.5 cm  
15 x 14 3/8 in

£300.00 (unframed)



**44. SAYED HAIDER RAZA**  
**1922-2016**

*Untitled (Bindu)*, 1982  
Silkscreen on paper  
Signed and dated lower right  
and numbered 11/120 lower left  
Print produced by the Noblet  
workshop in Grenoble  
Image: 49 x 48.5 cm, 19 1/4 x 19  
1/8 in  
Sheet: 64.5 x 48.5 cm, 25 3/8 x  
19 1/8 in

£ 2,000.00 (unframed)

*“With the Bindu, I discovered  
that a whole series of different  
climates of thought can be  
created. Bindu Panchtatva  
demonstrates the five elements of  
earth, water, fire, air and ether.  
I have interpreted the universe  
in terms of five primary colours:  
black, white, red, blue and yellow.”*

S.H. Raza, quoted in; Geeti Sen,  
*Bindu, Space and Time in Raza's  
Vision*, New Delhi, 1997



**45. SAYED HAIDER RAZA**

**1922-2016**

*Germination, 1987*

Serigraph on white vellum paper

Signed, dated and titled in pencil  
along lower margin

Unnumbered, from an edition of 100

Image: 50 x 50 cm, 20 5/8 in

Sheet: 75 x 53 cm, 29 1/2 x 20 7/8 in

£ 2,000.00 (unframed)

**LITERATURE**

Geethi Sen, *Bindu, Space and Time in  
Raza's Vision*, New Delhi, 1997, p. 108

(Another edition illustrated)



**46. ARPITA SINGH**

**b. 1937**

*This Could be Us, You, Or Anybody Else*, 2007

Signed, dated, titled and editioned along lower margin

Etching on paper

From an edition of 50

+5 AP

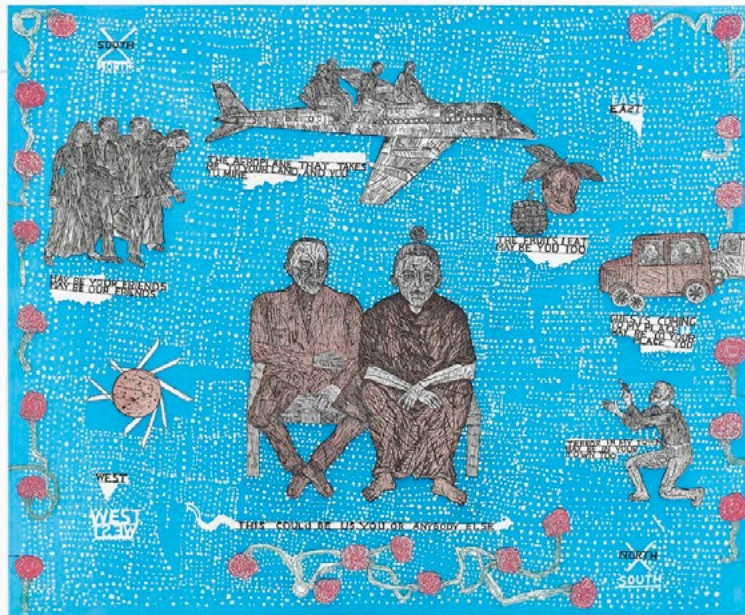
Image size:

63.5 x 73.7 cm

25 x 29 in

£ 1,000.00

(unframed)



**47. ARPITA SINGH**

**b. 1937**

*I Could See London Through the Clouds*, 2007

Signed, dated, titled and editioned along lower margin

Etching on paper

From an edition of 50 +5 AP

Image size:

71.1 x 58.4 cm

28 x 23 in

£ 1,000.00 (unframed)



45. SENAKA  
SENANAYAKE

b. 1951

*Ganesha*, 2015

Hahnemühle German

Etching on 310 gsm

Fine Art Paper

From an edition of

100 +20 AP

76 x 76 cm

29 7/8 x 29 7/8 in

£ 400.00 (unframed)



**Grosvenor  
Gallery**

**U P C O M I N G**

**E X H I B I T I O N S**

**2 0 2 1**

L'Etranger, Sadequain's  
Masterpiece, Spring

Rasheed Araeen, Spring

Modern South Asian Art, Summer

Wardha Shabbir, Autumn

Elisabeth Deane, Winter

More TBC

‘ESSENTIAL’ LISTENING

MORE TO COME...

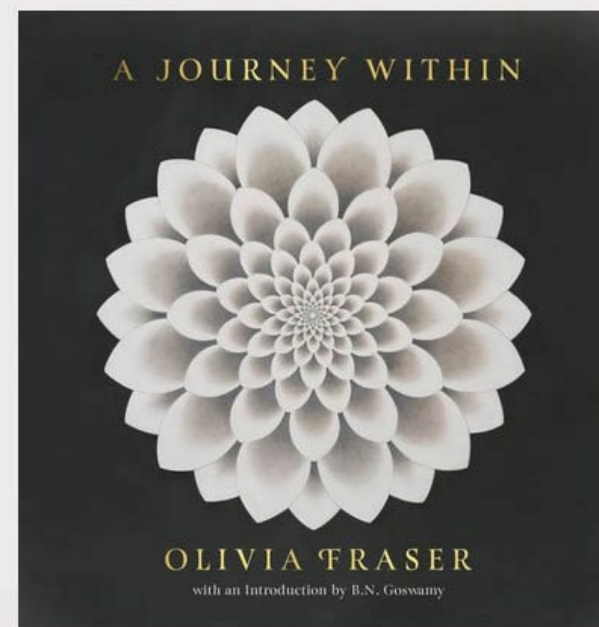


CLICK TO LISTEN NOW

**EPISODES NOW AVAILABLE**

where you listen to your podcasts.

Featuring talks with Wardha Shabbir, Elisabeth Deane, Faiza Butt, Olivia Fraser and Zimbiri.



## OLIVIA FRASER: A JOURNEY WITHIN

2019 Hardback

Publisher: Harper Collins India

£35.00

A limited number of signed copies available

*A Journey Within* documents Olivia Fraser’s acclaimed paintings over the last decade, which reflect her remarkable inner quest towards elaboration by simplification. Following her induction into Indian miniature painting in a traditional Jaipur atelier, Fraser’s focus shifted from painting the world around her to depicting a landscape more metaphysical in nature. Trained by her Jaipuri gurus, she learned to grind and mix mineral pigments to their correct consistency. She is especially influenced by Nathdwara pichwai paintings and early

nineteenth-century Jodpuri Mansingh-period imagery, produced by the Nath yogis, whose visual language reaches back to an archetypal iconography rooted in India’s deepest and most philosophical artistic heritage – complex abstract thoughts captured in seemingly simple visual language. The work Fraser has produced inspired by these twin muses is nevertheless profoundly contemporary, breaching both temporal and geographical borders, emerging as it does from her twin life between East and West.

# T W E L V E T W E N T Y

## **Grosvenor Gallery**

35 Bury Street  
London SW1Y 6AY

+44(0)20 7484 7979  
art@grosvenorgallery.com

[grosvenorgallery.com](http://grosvenorgallery.com)