

STEPHEN COX

**Grosvenor
Gallery**



STEPHEN COX

6 - 30 JUNE, 2025

**Grosvenor
Gallery**

35 Bury Street
London SW1Y 6AU

+44(0)20 7484 7979
art@grosvenorgallery.com

We are delighted to be exhibiting the work of renowned artist Stephen Cox RA (b.1940). The exhibition features a selection of historical sculptures and works on paper, largely made in India during the 1980s and '90s.

To view full details of the works in the exhibition, [please follow this link](#).

Stephen's work can also be seen at Houghton Hall in Norfolk. This major retrospective exhibition spans the grounds and house until 28 September 2025.



Stephen Cox at work in Mahabalipuram, India 1988



Yatra, Installation image at Jamali Kamali Gardens
New Delhi, 1996

Siva Parvati, 1987

Bronze

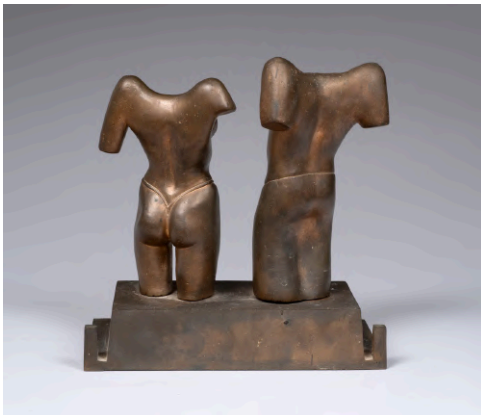
22 x 24 x 10 cm

8 5/8 x 9 1/2 x 4 in

Edition of 7

Publications

Bann, Stephen, *The Sculpture of Stephen Cox*, Lund
Humphries, 1995, p.127 (illustrated)





Diver II, 1987

Bronze, solid cast in Indian method

16.5 x 14 x 13 cm

6 1/2 x 5 1/2 x 5 1/8 in

Edition of 7

Publications

Bann, Stephen, *The Sculpture of Stephen Cox*, Lund Humphries, 1995, p.127 (illustrated)





Uma, 1987

Bronze, solid cast in Indian method

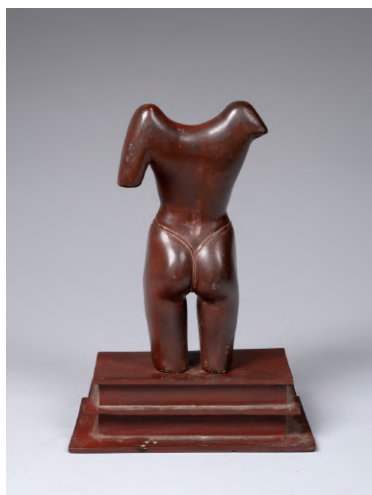
24 x 17 x 10 cm

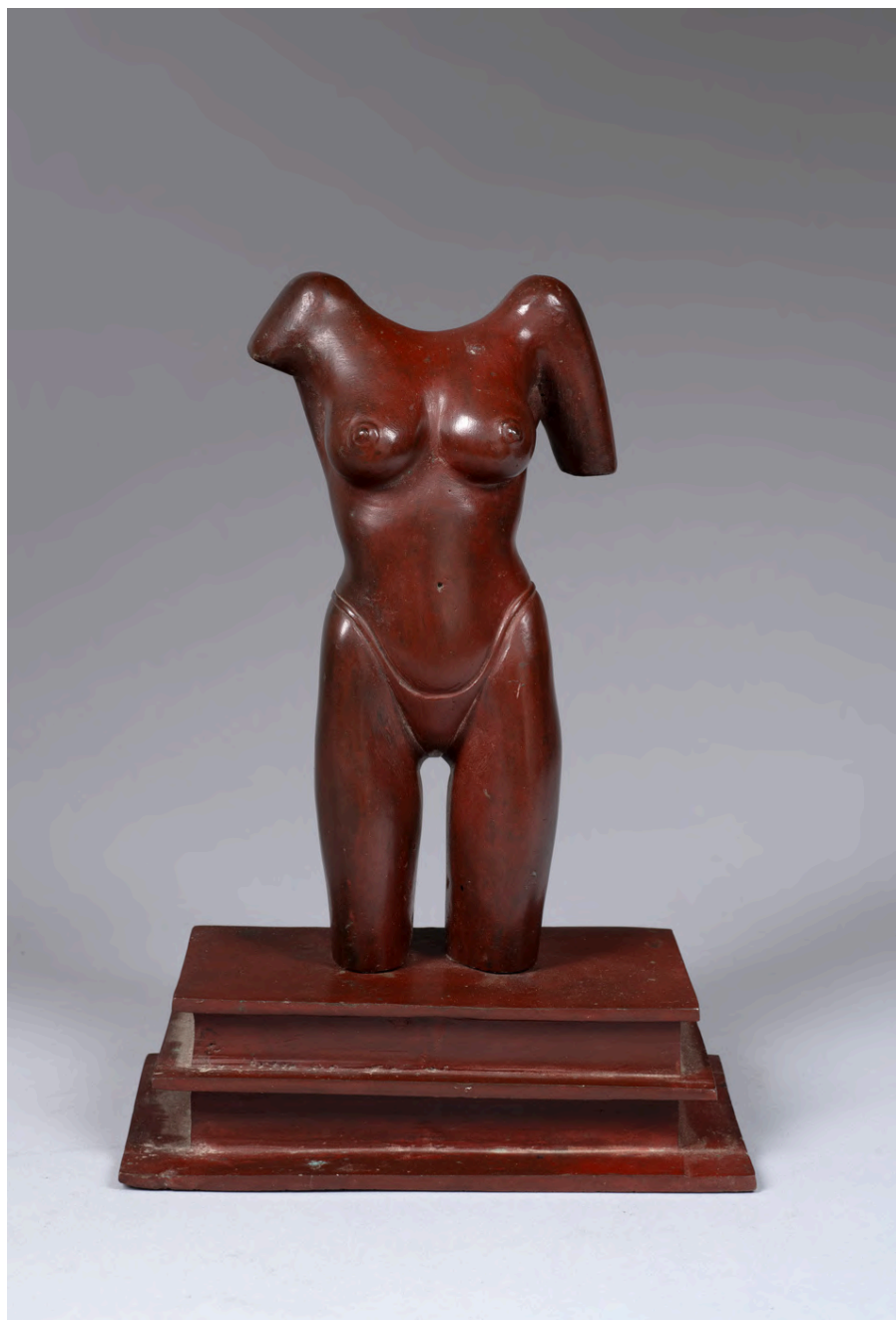
9 1/2 x 6 3/4 x 4 in

Edition of 7

Publications

Bann, Stephen, *The Sculpture of Stephen Cox*, Lund
Humphries, 1995, p.126 (illustrated)





Gendi, 1988

Black Indian granite with oil, triptych

Each: 120 x 50 x 30 cm

47 1/4 x 19 3/4 x 11 3/4 in

Publications

Bann, Stephen, *The Sculpture of Stephen Cox*, Lund
Humphries, 1995, p.129 (illustrated)

*For me art is a metaphor for
the things that religion, as a
domain, actually gives man -
the spiritual*

Stephen Cox







Gift II, 1993

Signed and dated lower right

Oil pastel on Pondicherry paper

75 x 55.5 cm

29 1/2 x 21 7/8 in

Exhibited

New Delhi, Ajanta Gallery, *Stephen Cox, An Indian Decade*, 1996

Publications

Bann, Stephen, *The Sculpture of Stephen Cox*, Lund Humphries, 1995, p.51 (illustrated in b&w)



Ajanta Gallery, 1996









Hermaphrodite 1,
Circa 1986

Charcoal on paper
38.5 x 14 cm
15 1/8 x 5 1/2 in



Hermaphrodite 2,
Circa 1986

Charcoal on paper
38.5 x 14 cm
15 1/8 x 5 1/2 in



Hermaphrodite 3,
Circa 1986

Charcoal on paper
38.5 x 14 cm
15 1/8 x 5 1/2 in



Hermaphrodite 4,
Circa 1986

Charcoal on paper
38.5 x 14 cm
15 1/8 x 5 1/2 in



Hermaphrodite 5, Nude, Circa 1986
Circa 1986

Charcoal on paper
38.5 x 14 cm
15 1/8 x 5 1/2 in

Charcoal on paper
38.5 x 14 cm
15 1/8 x 5 1/2 in



Ladder Heads Up, 1993

Black Indian granite and oil

22 x 15 x 7 cm each

8 5/8 x 5 7/8 x 2 3/4 in each

Published

Bann, Stephen, *The Sculpture of Stephen Cox*, Lund
Humphries, 1995, No. 461, p.140 (illustrated in b&w)





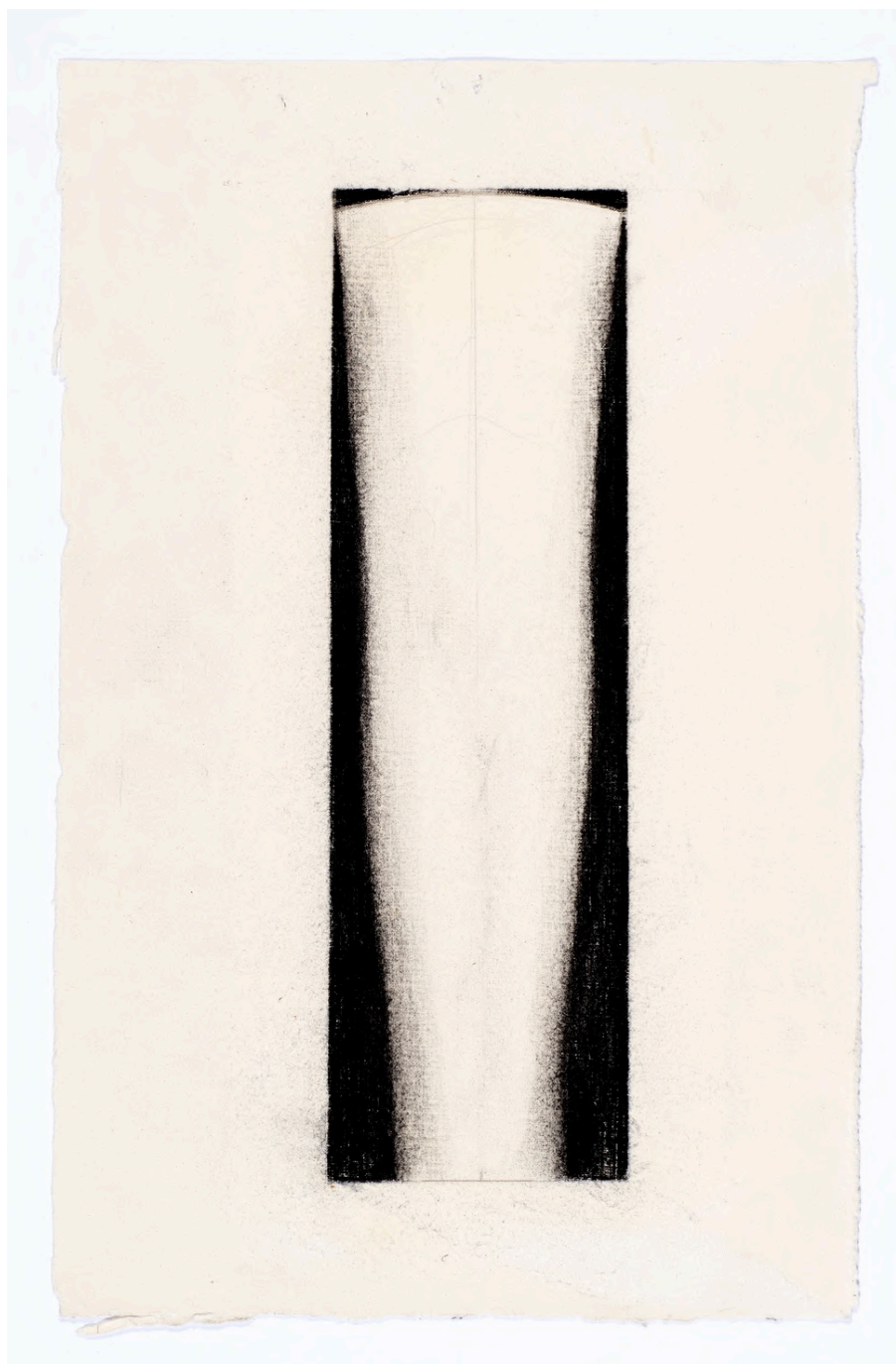


Study for an Egyptian Figure, 2004

Charcoal on paper

32 x 20.5 cm

12 5/8 x 8 1/8 in



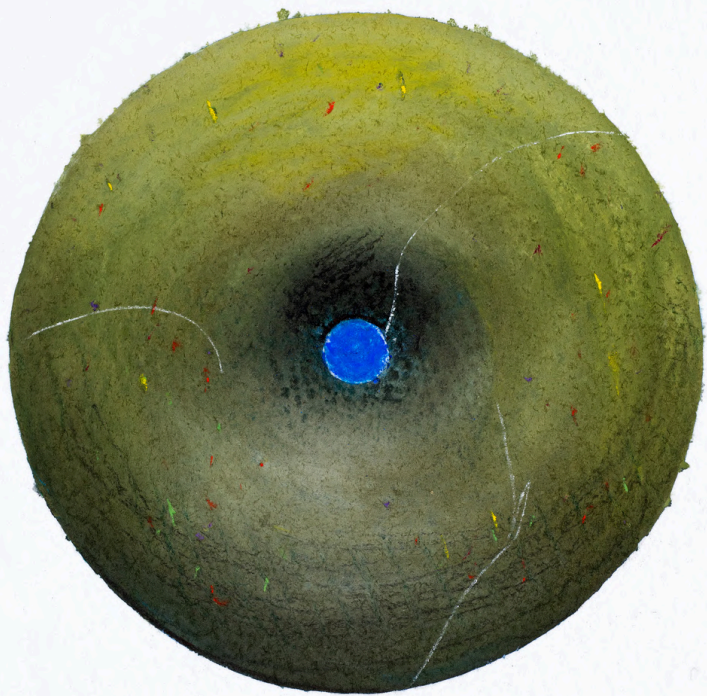
Oracle II, 2005

Signed, dated and titled

Pastel and watercolour on paper

21 x 15 cm

8 1/4 x 5 7/8 in



Oracle (iii)

Cox 2008

Elemental Head Studies I
(*One Eagle Place*), 2012

Signed and dated

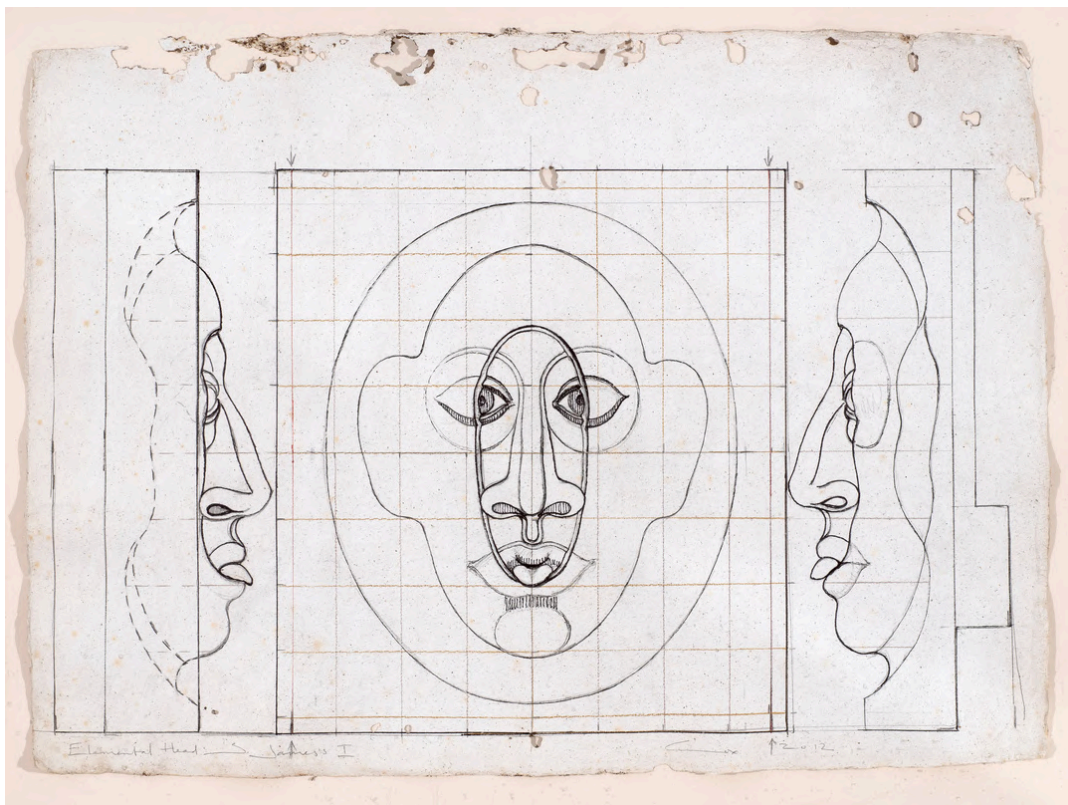
Ink, pen and crayon on Pondicherry paper

53 x 76 cm

20 7/8 x 29 7/8 in



One Eagle Place, London



*Study for sculpture at Apple Tree Yard,
London, 2018*

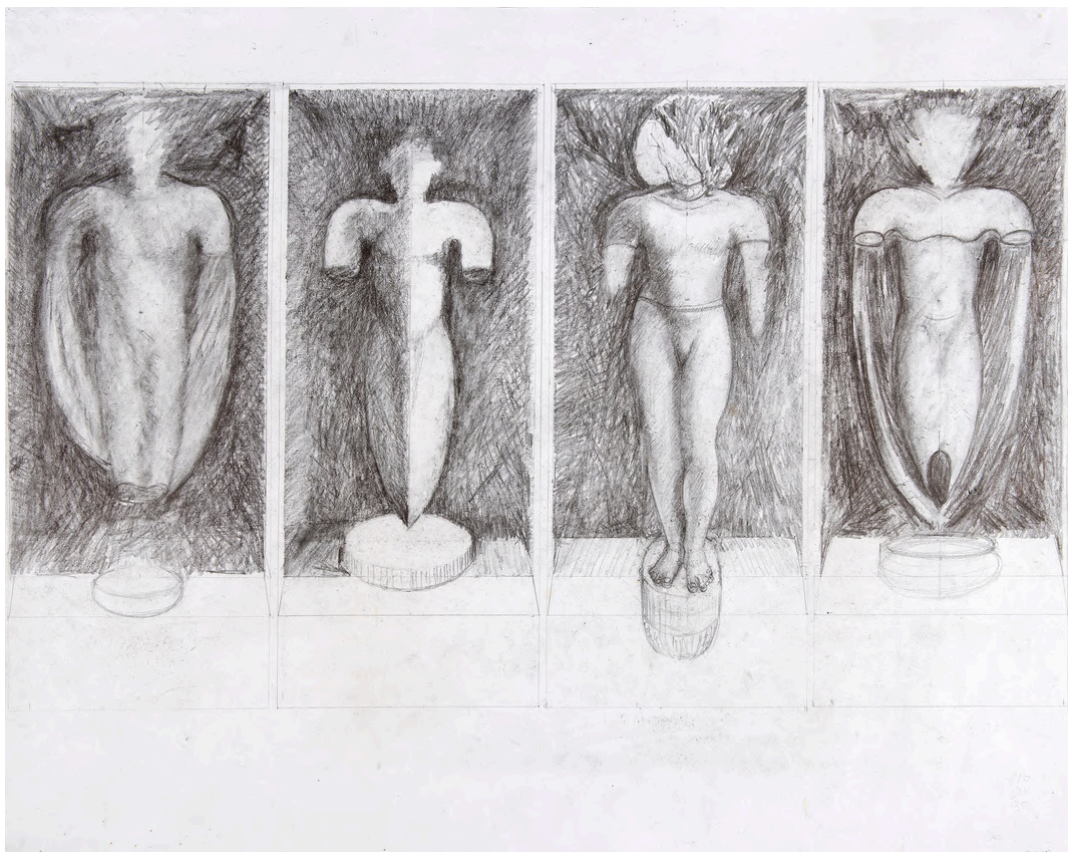
Graphite on paper

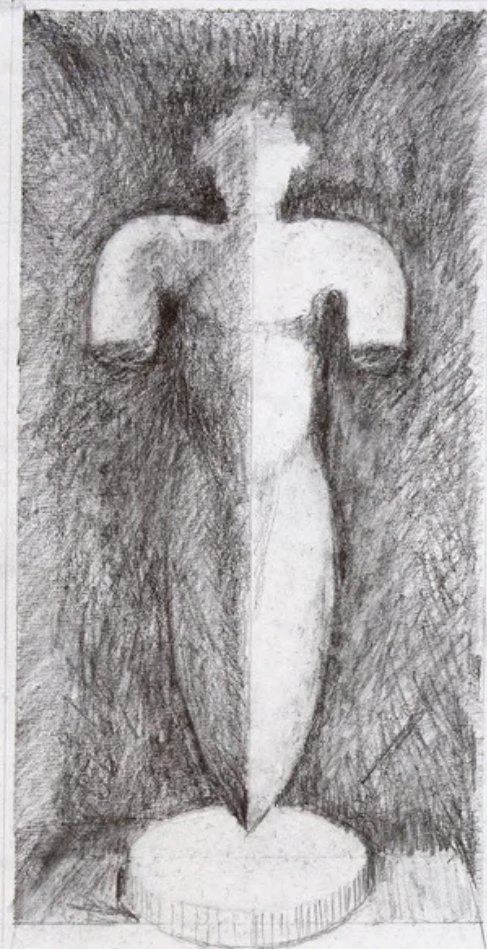
62 x 77 cm

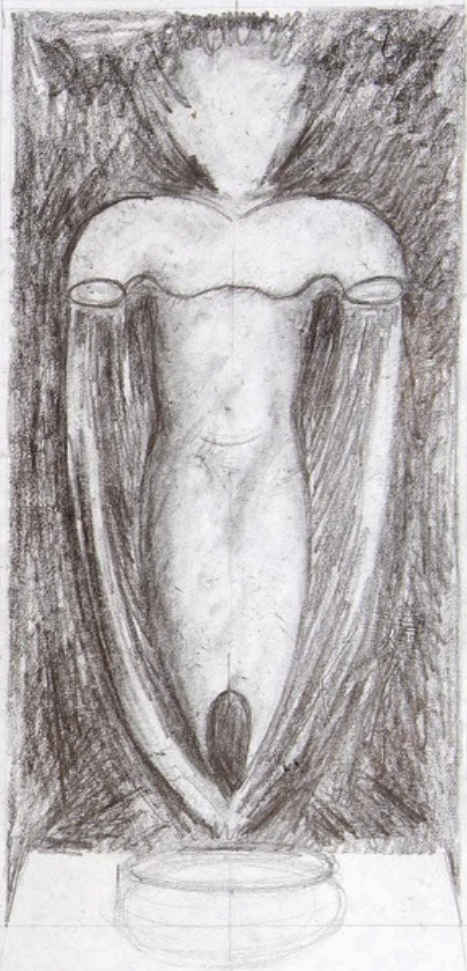
24 3/8 x 30 1/4 in



Apple Tree Yard, London







Little Kani 2024

English basalt, dolerite and Egyptian
granite

36 x 155 x 10 cm

14 1/8 x 61 x 4 in







STEPHEN COX RA (b. 1940)

Public Collections:

Amolfini Collection Trust, Bristol
Arts Council Collection, London
The British Council
British Museum, London
Centre for the Study of Sculpture, Henry Moore Institute
Leeds Cheltenham Art Gallery and Museums
Comune di Spoleto Comune di Siena, Siena
Fattoria di Celle, Pistoia
Fogg Art Museum, Harvard University, MA
Groninger Museum, Groningen
Harris Museum and Art Gallery, Preston
Hunterian Art Gallery, University of Glasgow
The John Creasey Museum, Salisbury
Leeds City Art Gallery, Leeds
Ludwig Forum fur Internationale Kunst, Aachen
South Bank Centre, London
Tate Gallery, London
Utsukushi-Ga-Hara Open Air Museum, Hakone
Uffizi Gallery, Firenze
V&A Museum, London
Villa Romana, Firenze
Walker Art Gallery, Liverpool



STEPHEN COX
MYTH

Houghton Hall

4 May - 28 September 2025

STEPHEN COX

6 - 30 JUNE, 2025

**Grosvenor
Gallery**

35 Bury Street
London SW1Y 6AU

+44(0)20 7484 7979
art@grosvenorgallery.com



