

Dilip Sur

Works: 1992–2006

Grosvenor Gallery

Dilip Sur

Works: 1992–2006

24–23 June 2006

1 Memories 1992–1994	7 Oasis 1996	13 About a Dream 1999
2 Man and Bull 1993–1996	8 Reflection 1998	14 Fire 1999–2000
3 Wanderer I 1994–1998	9 Creation 1998	15 Deluge 1999–2002
4 Shakuntala 1994–1998	10 Wanderer II 1998–1999	16 Pyre 2000
5 Lost in the Papyrus 1994–1998	11 Yudhisthira 1999	17 The Fall I 2001
6 Chandra-mallika is the name of a flower 1994–2000	12 Gail 1999	18 The Fall II 2001–2002

19 Lost Shoe 2002	20 Return of Nandini 2002	21 Mad Dog 2002–2004	22 Explosions I 2002–2004	23 Explosions II 2002–2004	24 Reverie I 2003
--------------------------------	--	-----------------------------------	--	---	--------------------------------

25 Reverie II 2003	26 The Tide 2003–2004	27 Hiranya-Kashipu 2005–2006	28 Deluge 2005	29 A Strange Darkness 2004–2005
---------------------------------	------------------------------------	---	-----------------------------	--

30 Yamuna-ke-tir 1991	31 Aparajita 1992	32 Before Dawn 1996	33 Jatayu 1998	34 Morning Tea 1999	35 By the Nile 1999	36 The Reflection 1999	37 Lotus 1999	38 Blue River 1999	39 Wild Roses 2000	40 Journey to Ur 2001	41 Reverie 2001	42 Gurudeva 2002	43 By the Golden Lake 2002
------------------------------------	--------------------------------	----------------------------------	-----------------------------	----------------------------------	----------------------------------	-------------------------------------	----------------------------	---------------------------------	---------------------------------	------------------------------------	------------------------------	-------------------------------	---

Foreword

With the mania for clarification that tends to engulf our evaluation of every cultural activity, the work of Dilip Sur would probably fall into the category of expressionism. To some extent this is true, but in his case the term needs qualifying. More than in any other culture, Indian visual arts always contain a strong current of expressionism. Contemporary painters such as M. F. Husain and the late F. N. Souza, or the splendid sculptures of Meera Mukherjee and Ramkinkar Baij, employ a forceful language based on the often violent stressing of contrasts or the deliberate dislocation of structure within a work. Immensely talented contemporary Indian artists (I am thinking for very different reasons of Tyeb Mehta or K.G. Subramanyan) employ what I would describe as a derivative type of expressionism in which psychoanalytical visual language has a strong role.

Dilip Sur's use of expressionist visual language appears to have followed a consistent trajectory since I first saw his work at his college in Delhi. The first paintings of his that greatly impressed me were to some extent narrative works based on legend, myth or perhaps folk stories. All made use of very strong colour contrasts – dense blacks and strong yellows tended to dominate the imagery. Gradually, however, the strong, even violent colour structure of the earlier paintings softened into a more vaporous language, in which objects are hinted at rather than described and sharp-edged contours give way to areas of saturated colour. This is an unusual development for an Indian artist, but one which offers great opportunities for innovatory works. Sur's recent work employs a literal vastness in the way space is unfolded and then released to extend meaning. — Peter de Francia

**Oil on
canvas**

1

Memories

1992–94

Oil on canvas

198 x 214cm (78 x 84in)



2

Man and Bull

1993–96

Oil on canvas

198 x 229cm (78 x 90in)



3

Wanderer I

1994–98

Oil on canvas

92 x 102cm (36 x 40in)



4

Shakuntala

1994–98

Oil on canvas

214 x 168cm (84 x 66in)



5

Lost in the Papyrus

1994–98

Oil on canvas

214 x 152cm (84 x 60in)



6

Chandra-mallika is the name of a flower

1994–2000

Oil on canvas

183 x 198cm (72 x 78in)



7

Oasis

1996

Oil on canvas

41 x 48cm (16 x 18in)



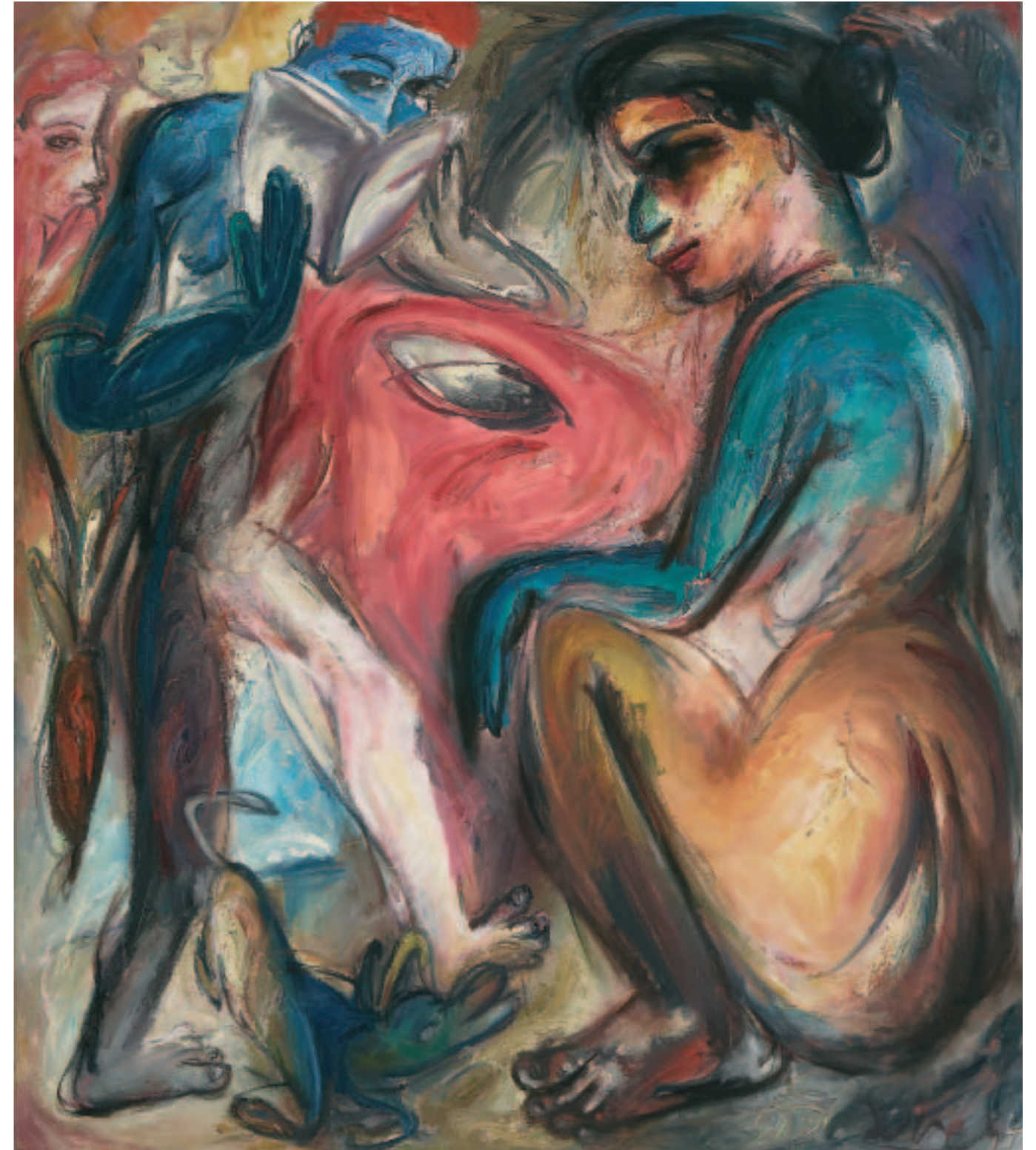
8

Reflection

1998

Oil on canvas

198 x 173cm (78 x 68in)



9

Creation

1998

Oil on canvas

92 x 102cm (36 x 40in)



10

Wanderer II

1998–1999

Oil on canvas

51 x 61cm (20 x 24in)



11

Yudhisthira

1999

Oil on canvas

51 x 56cm (20 x 22in)



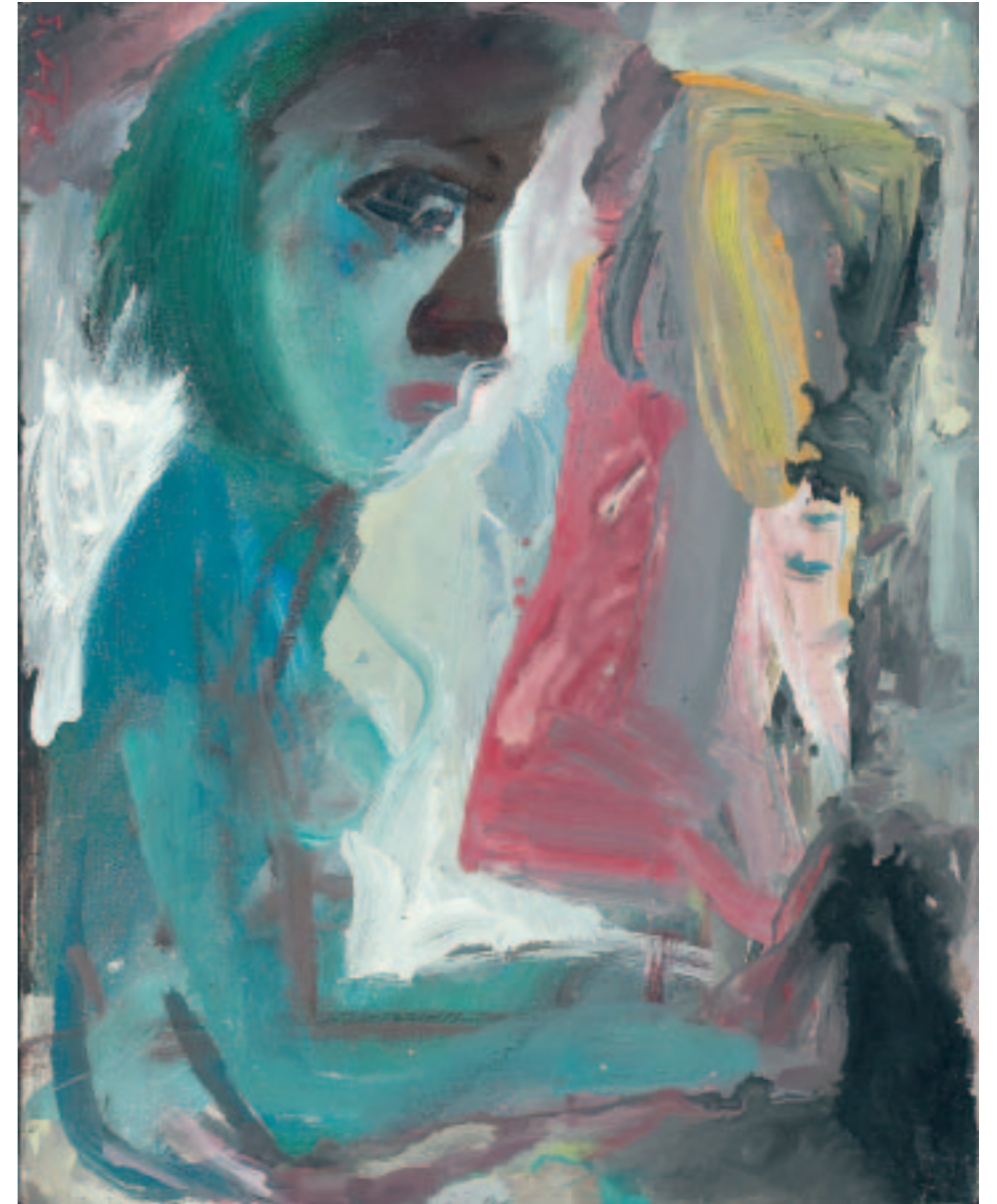
12

Gail

1999

Oil on canvas

39 x 30.5cm (15 x 12in)



13

About a Dream

1999

Oil on canvas

41 x 41cm (16 x 16in)



14

Fire

1999–2000

Oil on canvas

138 x 107cm (54 x 42in)



15

Deluge

1999–2002

Oil on canvas

138 x 107cm (54 x 42in)



16

Pyre

2000

Oil on canvas

102 x 107cm (40 x 42in)



17

The Fall I

2001

Oil on canvas

76 x 76cm (30 x 30in)



18

The Fall II

2001–2002

Oil on canvas

76 x 102cm (30 x 40in)



19

Lost Shoe

2002

Oil on canvas

76 x 76cm (30 x 30in)



20

Return of Nandini

2002

Oil on canvas

176 x 196cm (69 x 77in)



21

Mad Dog

2002–2004

Oil on canvas

107 x 122cm (42 x 48in)



22

Explosions I

2002–2004

Oil on canvas

122 x 142cm (48 x 56in)



23

Explosions II

2002–2004

Oil on canvas

122 x 142cm (48 x 56in)



24

Reverie I

2003

Oil on canvas

188 x 173cm (74 x 68in)



25

Reverie II

2003

Oil on canvas

198 x 183cm (78 x 72in)



26

The Tide

2003–2004

Oil on canvas

122 x 122cm (48 x 48in)



27

Hiranya-Kashipu

2005–2006

Oil on canvas

168 x 152cm (66 x 60in)



28

Deluge

2005

Oil on canvas

122 x 152cm (48 x 60in)



29

A Strange Darkness

2004–2005

Mixed media on canvas
3 x 5.5m (10 x 18ft)





**Works
on paper**

30

Yamuna-ke-tir

1991
Charcoal on paper
56 x 71 cm (22 x 28in)



31

Aparajita

1992
Charcoal on paper
35.5 x 40.7cm (14 x 16in)



32

Before Dawn

1996

Charcoal, pastel and gouache on paper
70 x 49.5cm (27 1/2 x 19 1/2in)



33

Jatayu

1998

Charcoal, pastel and gouache on paper
70 x 49.5cm (27 1/2 x 19 1/2in)



34

Morning Tea

1999
Charcoal, ink and gouache on paper
49.5 x 70cm (19 1/2 x 27 1/2 in)



35

By the Nile

1999
Charcoal and gouache on paper
49.5 x 70cm (19 1/2 x 27 1/2 in)



36

The Reflection

1999
Charcoal, conte and gouache on paper
66 x 48.2cm (26 x 19in)



37

Lotus

1999
Charcoal, pastel, ink and gouache on paper
70 x 49.5cm (27 1/2 x 19 1/2in)



38

Blue River

1999

Ink, pastel and charcoal on paper
30.5 x 23cm (12 x 9in)



39

Wild Roses

2000

Pastel, ink charcoal and gouache on paper
30.5 x 25.5cm (12 x 10in)



40

Journey to Ur

2001

Pastel, ink and charcoal on paper
70 x 49.5cm (27 1/2 x 19 1/2in)



41

Reverie

2001

Pencil, pastel, charcoal and gouache on paper
51 x 70cm (20 x 27 1/2in)



42

Gurudeva

2002

Charcoal, ink and gouache on paper
49.5 x 70cm (19 1/2 x 27 1/2 in)

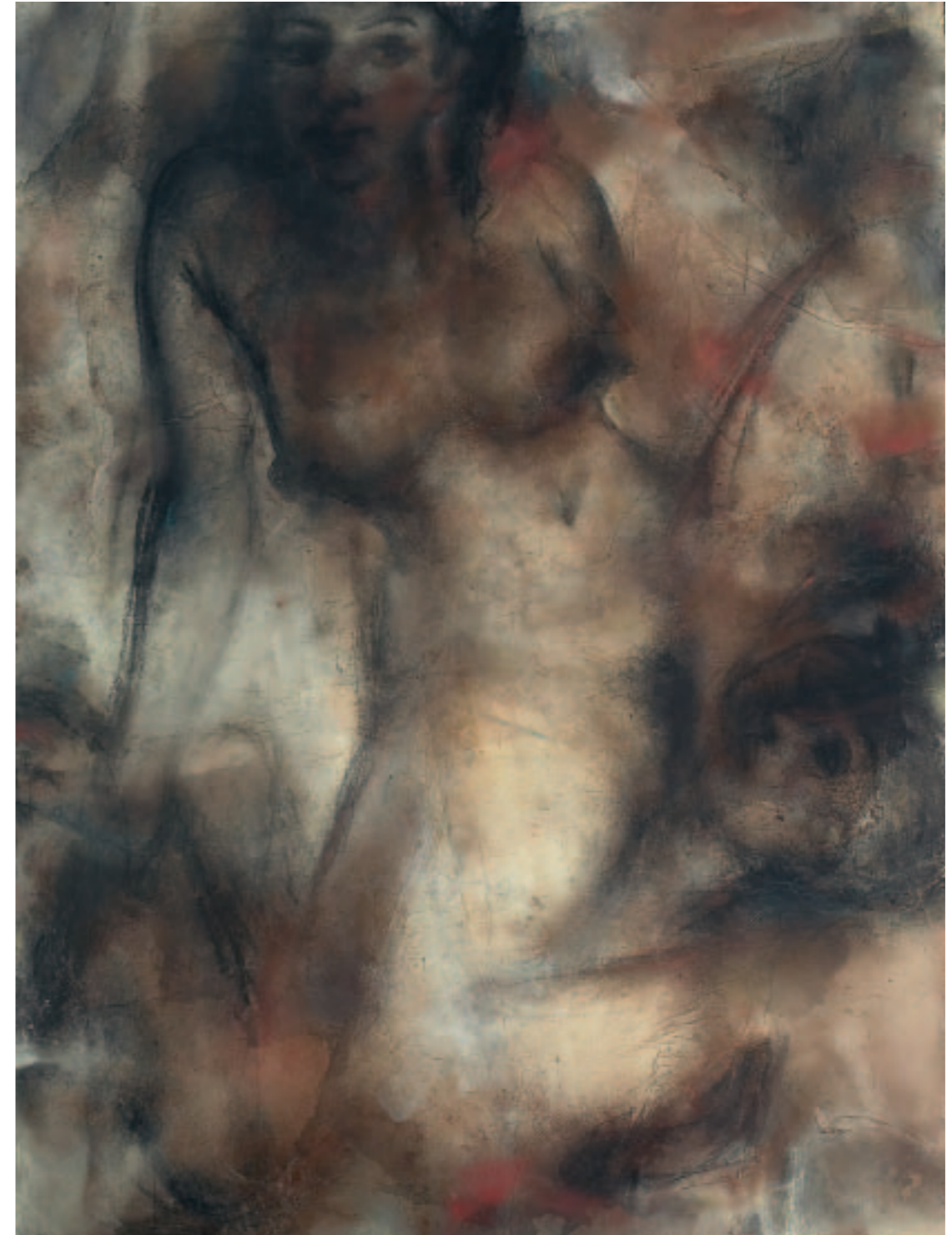


43

By the Golden Lake

2002

Mixed media on Nepalese paper
135.5 x 110cm (53 x 39 in)



Biography

	Dilip Sur		Selected Group Exhibitions
1960	Born in West Bengal, India	2001	'Expressing Exile' Jewish Cultural Centre, London
1980	Graduation in Painting from Government College of Art, Calcutta	2000	Boundary Art Gallery, London
1984	Graduation in Sculpture from Government College of Art, Calcutta	2000	Ark 2000, Dilston Grove, London
1991	MA in Painting from College of Art, New Delhi	1999	'Kunstbrücke' Galerie am Prater, Berlin, Germany
1992	Post Graduation in Painting from Byam Shaw School of Art, London	1998	'Lines of Desire' International Drawing Exhibition, Bluecoat Gallery, New Forest, England
	Awards	1997	'Marking Presence' Artsway, Mercury Gallery, Cork Street, London
2000	Evelyn Williams Fellowship, Cheltenham & Gloucester College of Art	1996	'Attitude' European Art Festival, Knooke, Belgium
1999	'Kunstbrücke' Artist Residency, Berlin	1996	Curwen Gallery, London
1994	UNESCO Fellowship, European Ceramics Centre, Holland	1995	Kapil Jariwala Gallery, London
1994	Delfina Artist Residency, Spain	1995	National Museum, Gdansk, Poland
1992	Charles Wallace Trust, British Council Post Graduate Fellowship	1994	'Works in Ceramic' Galerie Schoo, Amsterdam
	Solo Exhibitions	1994	'Works in Ceramic' European Ceramics Centre, Holland
2003	ACAVA studio project residency exhibition, London	1994	Royal Overseas League Annual Exhibition, London and Edinburgh
2000	Pittville Gallery, Cheltenham & Gloucester College of Art, Cheltenham	1993	Contemporary Arts Society Art Market, Smith Gallery, London
1999	Galerie Schoo, Amsterdam, Holland	1992	International Art Exhibition, Seoul, South Korea
1996	Galerie Schoo, Amsterdam, Holland	1992	National Art Exhibition, Lalit Kala Academy, New Delhi, India
1994	Midlands Art Centre, Birmingham, England	1992	'Imprints on our Time' Jehangir Art Gallery, Bombay, India
1994	Galerie Schoo, Amsterdam, Holland		

Credits

Collections
Works in many private and public collections around the world including the National Gallery of Modern Art, New Delhi, India; European Ceramics Centre, Holland, and the Arthur Andersen Collection, London.

Dilip Sur teaches at the Royal College of Art, London where he has been teaching since 1996.

Photography
Matt Pia

Framing
Jonathan Waller Framers

Design
Christian Küsters_CHK Design

Printing
Special Blue

Thanks to all at Grosvenor Gallery