

INNER WEAVES

**RECENT PAINTINGS BY
ANGELI SOWANI**



Pratham UK
Every child in school ... and learning well.

**Grosvenor
Gallery**

Grosvenor Gallery



INNER WEAVES

Recent Paintings by Angeli Sowani

In associations with Pratham, UK

Grosvenor Gallery

32 St James's Street
London SW1A 1HD

art@grosvenorgallery.com

+44(0)20 74847979

grosvenorgallery.com

Grosvenor Gallery is pleased to announce its upcoming exhibition '**Inner Weaves, Recent paintings by Angeli Sowani.**' The exhibition is held in association with the **UK based charity Pratham UK**, and a portion of the sales will benefit the charity. Pratham UK raises funds to provide education to children in India, and along with their partners have helped over 35 million children since 1995.

The exhibition will open with an invitation only private view on **Tuesday, 6th December 2016** from **6-8pm**. It will be open to the public from the **7th to the 23rd December**.

Angeli Sowani trained as an illustrator and graphic designer at the prestigious National Institute of Design in Ahmedabad. After leaving India in 1988, Angeli travelled extensively, living and working in Nepal, Thailand, Hong Kong and finally in England, each place presenting her with new sources of inspiration, whether it was the blood sacrifices to Hindu idols in Kathmandu; the Buddhist imagery and use of gold leaf in Thailand; the votive papers burnt in offering to the Gods in Hong Kong or the play of warm autumn sunlight pouring down through the stained glass windows on the flagstones of British Cathedrals, offering areas of abstract colour which subsequently found space in her paintings.

A keen sensitivity to current affairs is also consistently apparent in works that make reference to the Boxing Day Tsunami, the London Bombings and the terrorist attacks in Mumbai, highlighting human reactions to these tragic events.

This multitude of influences and inspiration imbibed from her upbringing and her exposure to ritual and religion in different cultures and countries are pulled together in her works into a harmonious construct of expression and meaning. This harmony runs like a scarlet thread through the body of works in *Seraphim* (2012) and *Vaahan* (2010) tying it together through the medium of fire. The repetitive use of symbols, char marks and patterns becoming a meditative and thoughtful exploration of impermanence, change and fragility, and its mystical ability to transform earthly materials into the immaterial ... in that sense, it is a continuation of her earlier show *Inner Weaves* (2007) in which she explored the complex interplay of thought and emotion, and the desire to keep in touch with your roots in the context of constant displacement.

“Painting to me is a bit of a metaphor for life itself. You start with an idea of where you want to go, using colours and palettes that are familiar but then as you work it links to your state of mind, and the moment in time and to events that influence you, and you end up somewhere you had not imagined when you started.”

Angeli Sowani, London, 2015



Inner Weaves I, (detail)

**1. Inner weaves I,
2016
Acrylic, Ceremonial
threads and
Aluminium foil on
Canvas**

**180 X 160 cm (70 7/8 X 63
in)**





2. Inner weaves II,
2016
Oil & Ceremonial
threads on canvas¹
150 X 140 cm (59 1/8 X 55
1/8 in)



Inner Weaves III, (detail)

3. Inner Weaves III, 2016
Acrylic and ceremonial
threads on canvas

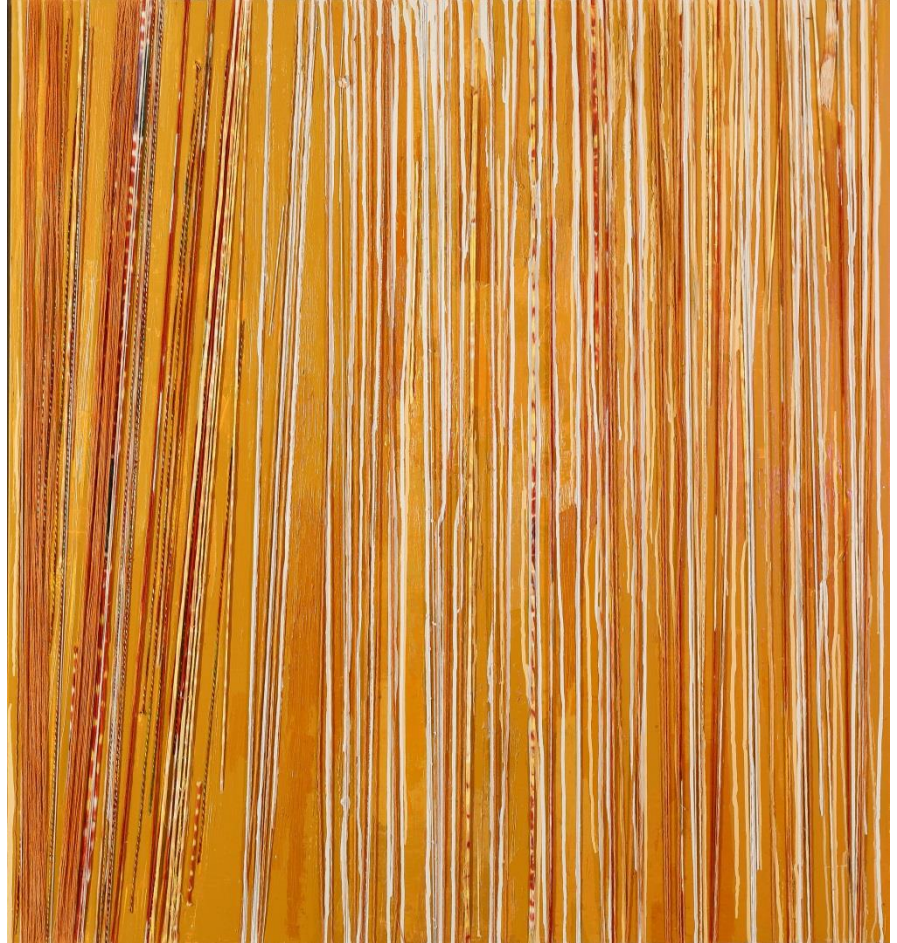
140 X 120 cm (55 1/8 X 47 1/4
in)





Inner Weaves IV, (detail)

4. Inner Weaves IV,
2016
**Acrylic and
ceremonial threads on
canvas**
150 X 140 cm (59 1/8 X 55 1/8
in)



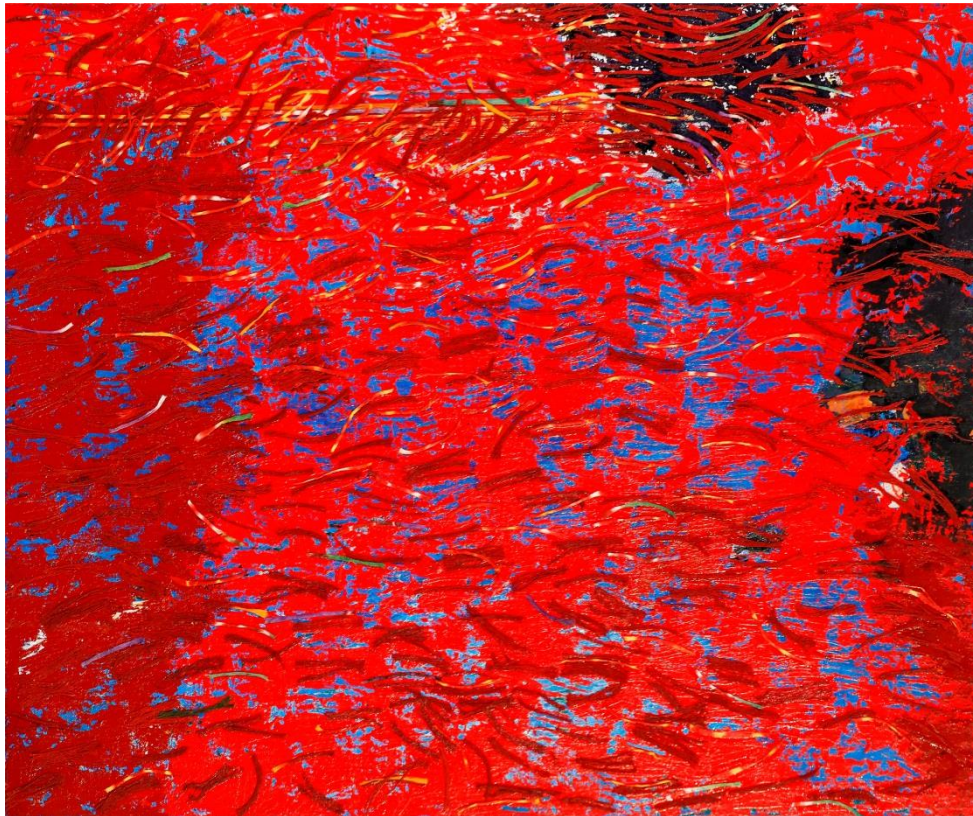


5. Inner Weaves V,

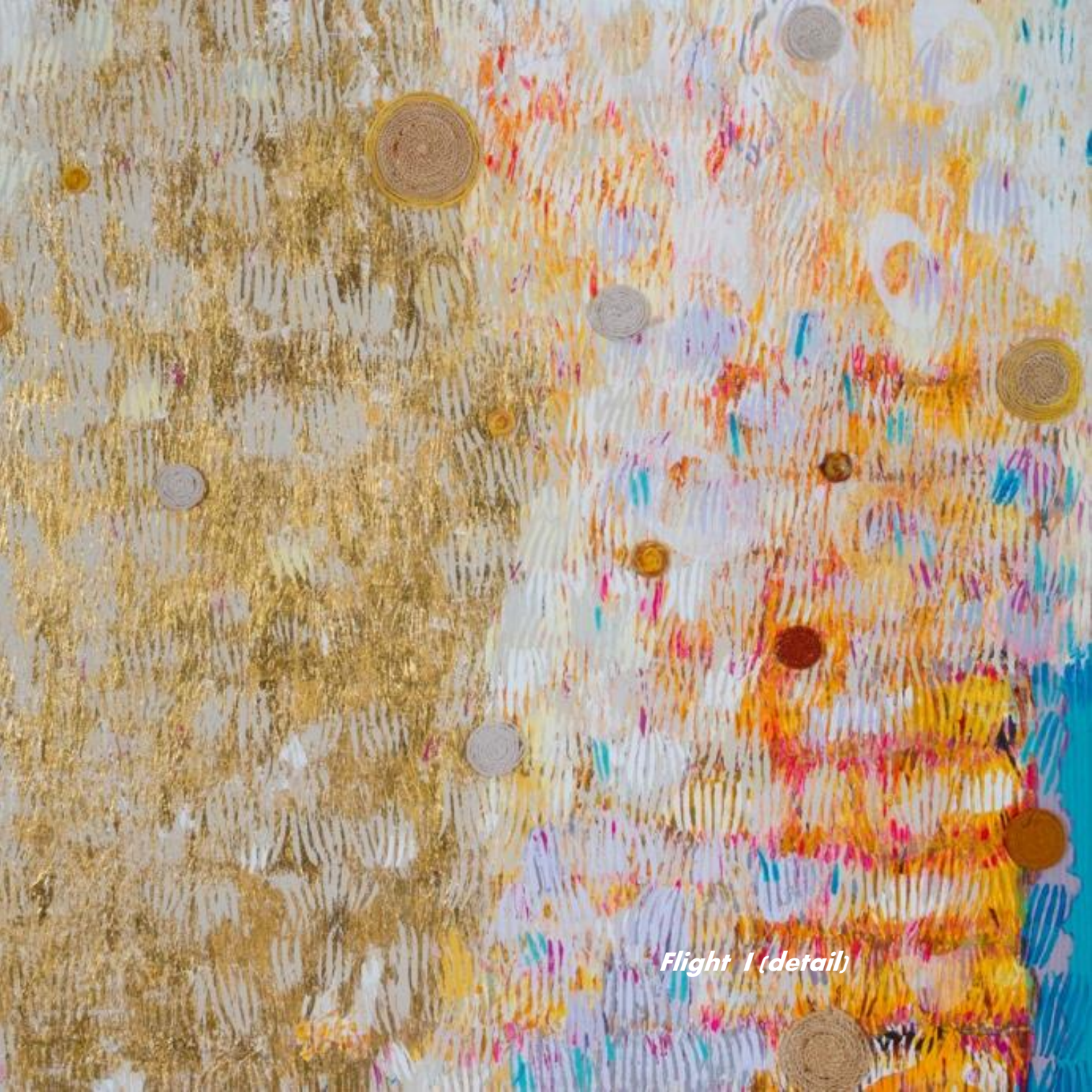
2016

Collage on canvas

**60 x 60 cm (23 5/8 x 23
5/8 in)**



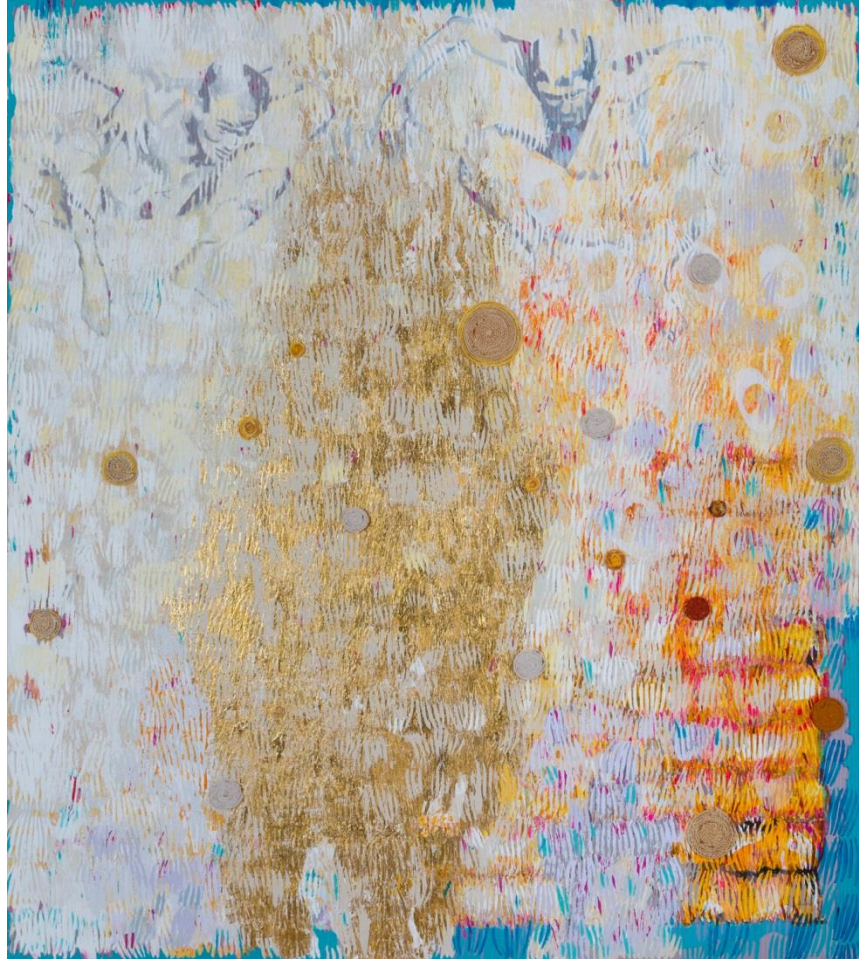
**5A. Inner Weaves
VI, 2016
Acrylic on
Canvas**

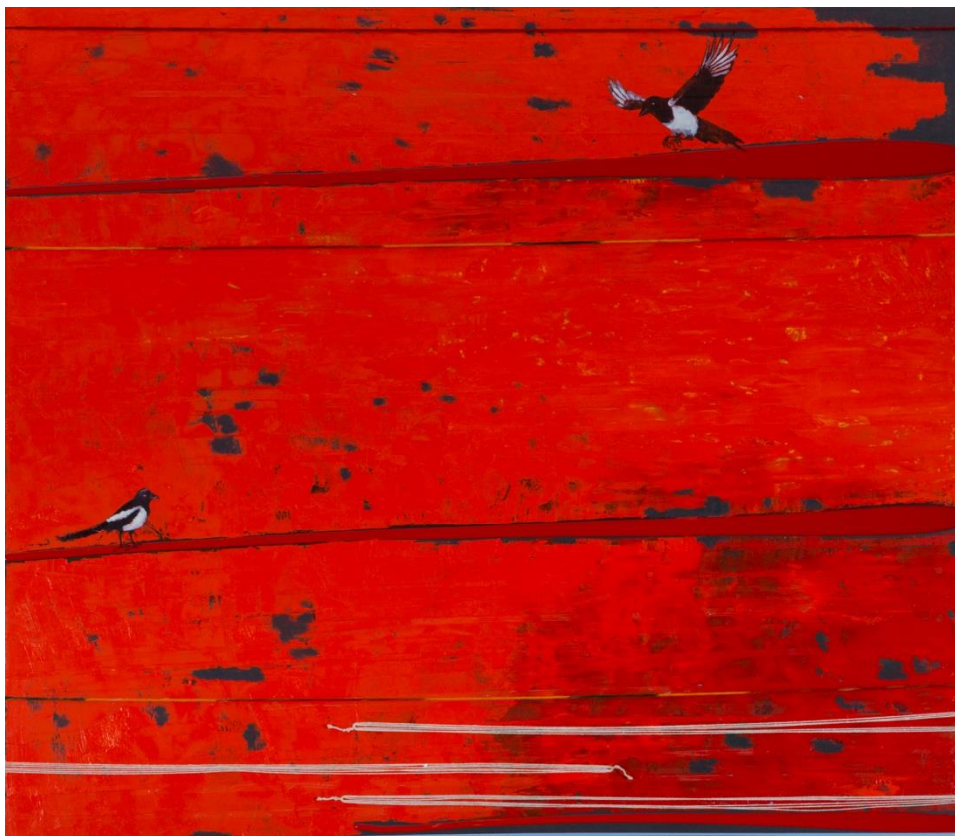


Flight I (detail)

6. Flight I, 2015
Acrylic, Gold leaf,
Mauli threads on
Canvas

180 x 160 cm. (70 ³/₄ x 62
7/8 in.)





7. **Flight III**, 2015
**Oil and Maui
threads on canvas**
102 X 116 cm. (40 X 45 ½
in.)



9. Flight V, 2015

Ink on canvas

**75 x 75 cm. (29 ½ x 29 ½
in.)**

10. **Flight VI**, 2015
**Mixed media on red
canvas**

46 X 40 cm. (18 X 15 7/8 in.)





11. **Flight VII**, 2015
**Mixed media on red
canvas**

46 x 40 cm. (18 x 15 7/8 in.)



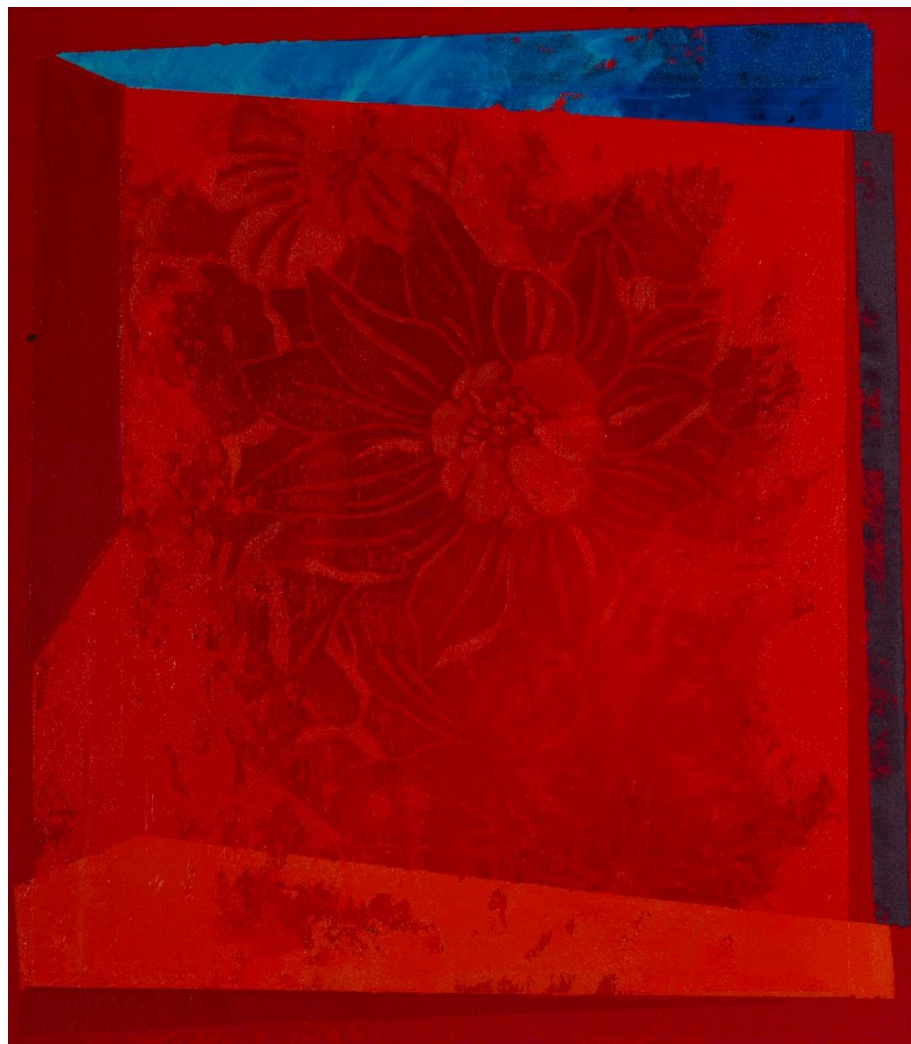




12. **Flight IX**, 2015
**Mixed media on red
canvas**
46 X 40 cm. (18 X 15 7/8 in.)

13. Flight X, 2015
Mixed media on
red canvas

46 x 40 cm. (18 x 15 7/8
in.)





14. Flight XI, 2015
Mixed media on
red canvas

46 X 40 cm. (18 X 15 7/8
in.)



15. **Nomad III**, 2015
**Burn and mixed
media on canvas**

48 X 40 cm. (18 7/8 X 15 7/8
in.)



Nomad IV (detail)

16. **Nomad IV**, 2015
**Burn and mixed
media on canvas**
80 x 80 cm. (31 ½ x 31 ½
in.)







17. Nomad V, 2015
Burn and mixed
media on canvas
40 X 40 cm. (15 7/8 X 15 7/8
in.)



Installation shot



Installation shots



Installation shots



Grosvenor Gallery

32 St James's Street

London SW1A 1HD

art@grosvenorgallery.com

+44(0)20 74847979

grosvenorgallery.com



**Grosvenor
Gallery**