

sculpture

From the Human Form

29 April – 23 May 1968



Grosvenor Gallery

30 Davies Street London W1
telephone 01-629 0891
telegrams Sevenartz London



12

BUTLER Reg b.1913 *inches*
 8 Figure in Space 1957/8 *Bronze* 36 H

CASCELLA Andrea b.1920
 9 Embracing Figures 1961 *White marble* 33 H
 10 Reclining 1961 *White marble* 20×34×21

CESAR b.1921
 11 Hommage a Léon 1964 *Bronze* 35 H

CHAUVIN Louis b.1889
 12 Mother and Child *Bronze* 20½ H

DEGAS Edgar 1834–1917
 * 13 Le Tub 1886 *Bronze* 25 H

DOBSON Frank 1888–1956
 14 Reclining Girl 1926 *Bronze* 10×16
 15 Awakening 1943 *Marble* 18½ H

ADZAK Roy b.1927 *inches*
 1 Split Negative Forms 1966 *Plastic on canvas* 34×39

ARCHIPENKO Alexander 1887–1964
 2 Statuette 1914 *Bronze* 30 H
 3 Woman Standing 1916 *Bronze* 24½ H

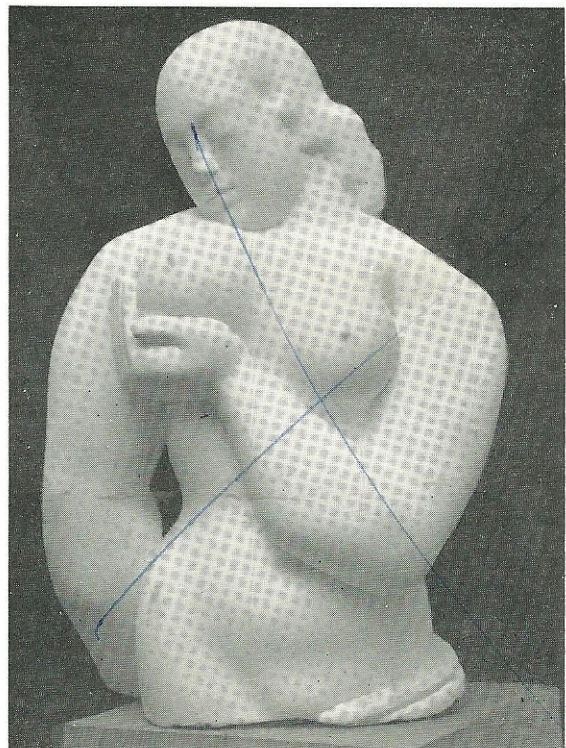
ARP Jean 1887–1966
 * 4 Torso c.1953 *Bronze* 12 H

AYRTON Michael b.1921
 5 Slender Sentinel 1963 *Bronze* 24 H

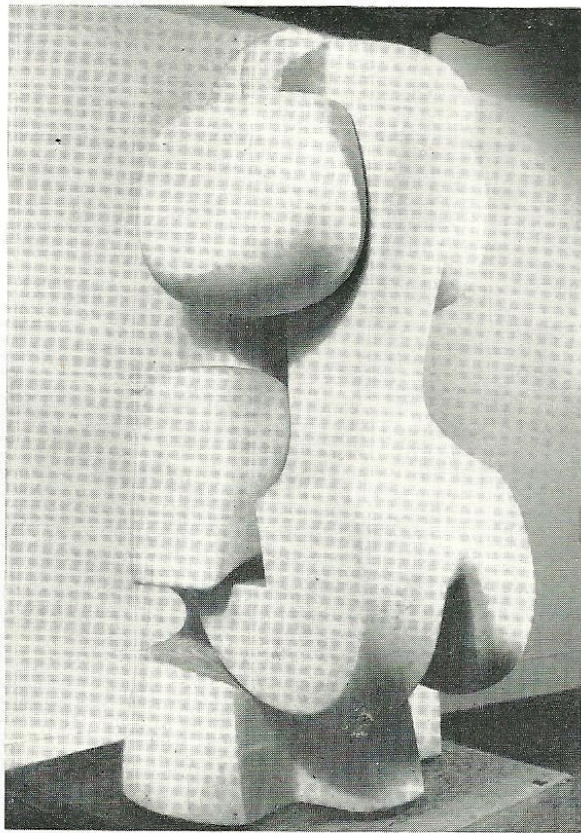
BERROCAL b.1933
 6 David 1966 *Bronze* 12 H
 (22 elements)

BULLMORE Edward b.1937
 7 Astroform Descending 1967 *Canvas & wood* 62 H×46

*Private Collection



15



- EPSTEIN Jacob** 1880–1959 *inches*
- 16 Relief of W.H. Hudson 1924 *Bronze* 13×17½
- ERNST Max** b.1891
- * 17 Apaisement 1961 *Bronze* 27 H
- EVENSEN Björn Erling** b.1924
- 18 Figure 1967 *Bronze* 4×4¾
- 19 Arms III 1967 *Bronze* 6 L×4
- FRINK Elizabeth** b.1930
- 20 Man with Goggles 1968 *Bronze* 19½ H
- FULLARD George** b.1924
- 21 Striding Woman with Child *Bronze* 32½ H

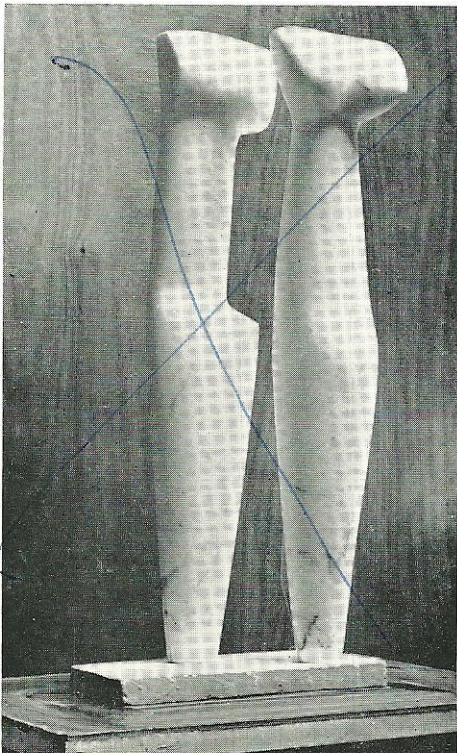
*Private Collection



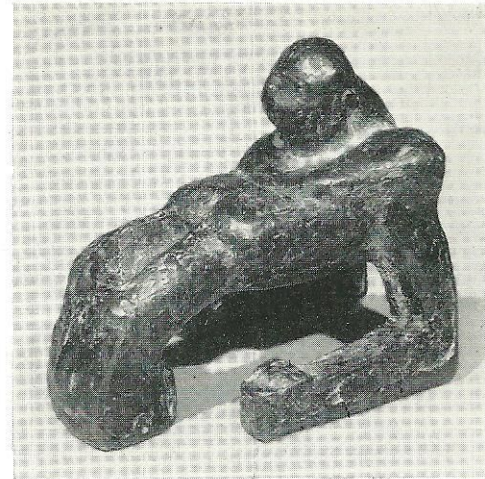
37

- GAUDIER-BRZESKA Henri** 1891–1915 *inches*
- * 22 Maternity 1913 *Bronze* 14×9
- 23 Women Carrying Sacks *Bronze relief* 14×11
- GIACOMETTI Alberto** 1901–1966
- * 24 Donna 1953 *Bronze* 19½ H
- GRECO Emilio** b.1913
- 25 Crouching Figure 1956 *Bronze* 26 H
- GUTFREUND Ota** 1889–1927
- 26 Lovers 1925 *Bronze* 5×13
- 27 Reclining Nude 1927 *Bronze* 5½×11
- HENGHES Heinz**
- 28 Male and Female 1956 *White marble* 33½ H
- 28a Image *Bronze* 41 H
- HOFLEHNER Rudolf** b.1916
- 29 Standing Figure 1958 *Iron* 43¼ H
- 30 Standing Figure 1958 *Iron* 32¼ H
- JAMES Kim** b.1928
- 31 Torso 1967/8 *Wood* 26 H
- JANECEK Ota** b.1919
- 32 Standing Figure c.1960 *Bronze* 11 H
- 33 Standing Figure c.1960 *Bronze* 5⅛ H

JONZEN Karin b. 1914			<i>inches</i>
34 Torso	1964	Plaster for casting	38 H
KALLEM Herbert b. 1909			
35 The Virgin	c. 1950	Bronze	14½ H
KOENIG Gisha b. 1922			
36 Seated Child	1968	Bronze	19 H
KUMALO Sidney b. 1936			
37 Reclining Nude I	1966	Bronze	12 L
38 Seated Woman	1966	Bronze	22½ H
LAURENS Henri 1885–1954			
* 39 Lying Nude	c. 1920	Bronze	20 L
LEHMBRUCK Wilhelm 1881–1919			
40 Female Torso	1913	Cast stone	27½ H



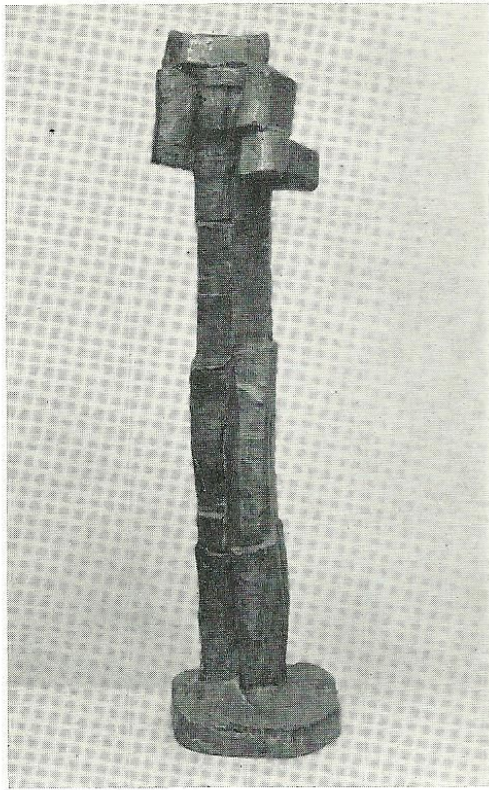
28



47

MARINI Marino b. 1901			<i>inches</i>
* 41 Pomona	1948	Bronze	11½ L
MATISSE Henri 1869–1954			
* 42 Reclining Nude II	c. 1929	Bronze	19½ L
MERLIER Pierre b. 1931			
43 La Toilette de Madame		Wood	39½ H
44 The Dream		Wood	23½ L
MOORE Henry b. 1898			
* 45 Seated Figure Against Curved Wall	1956/7	Bronze	36 L
NEIZVESTNY Ernst b. 1925			
46 Torso	c. 1954	Bronze	12½ H
47 Figure Leaning on Elbows	c. 1954	Bronze	6½ H
NEWTON Ferris b. 1934			
48 Figure	1967	Polystyrene	14 H
PICASSO Pablo b. 1881			
* 49 Standing Figure	1926	Bronze	7 H
* 50 Dancing Faun	c. 1936	Wire	7¾ H
PLAZZOTTA Enzo b. 1921			
51 Nadia Nerina—Arabesque II	1967	Bronze	23½ H
52 Nadia Nerina—Rehearsal II	1967	Bronze	35 H

*Private Collection



66

TURNBULL William b. 1922 *inches*
60 Standing Figure *Bronze* 62 H

UNDERWOOD Leon b. 1890
61 The Birth of Eve c. 1925 *Chased brass* 8×10×8
62 Water Rhythm 1953 *Bronze* 6×20×9

VIANI Alberto b. 1906
63 Torso *White marble* 52 $\frac{3}{4}$ H

WERNER Michael b. 1912
64 Reclining Torso *Ciment fondu* 32 L×20 W
65 Reclining Torso *Ciment fondu* 12 L

WOTRUBA Fritz b. 1907
66 Figure With Raised Arms 1956/7 *Bronze* 32 $\frac{3}{4}$ H

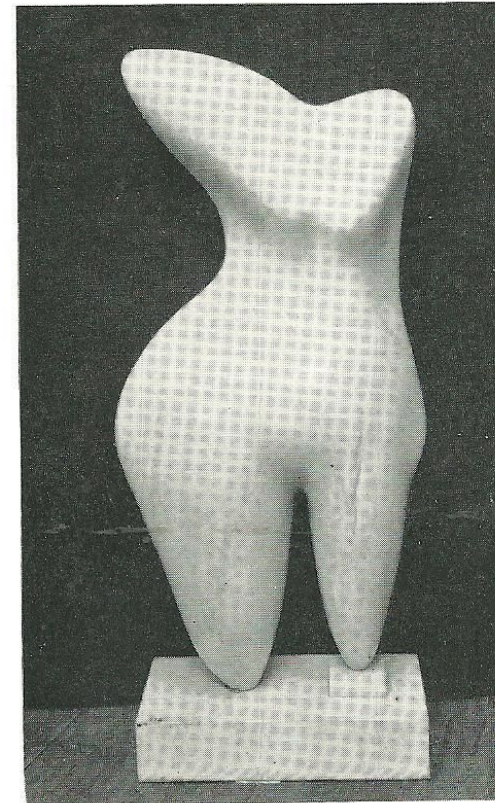
RENOIR Auguste 1841–1919 *inches*
* 53 Petit Venus Debout 1913 *Bronze* 23 $\frac{5}{8}$ H
54 Danseuse au Voile *Bronze* 25 $\frac{3}{8}$ H

RODIN Auguste 1840–1917
* 55 La Jeunesse Triomphante 1894 *Bronze* 22 $\frac{1}{2}$ H
56 L'Éternel Printemps c. 1900 *Bronze* 26×33 $\frac{1}{2}$

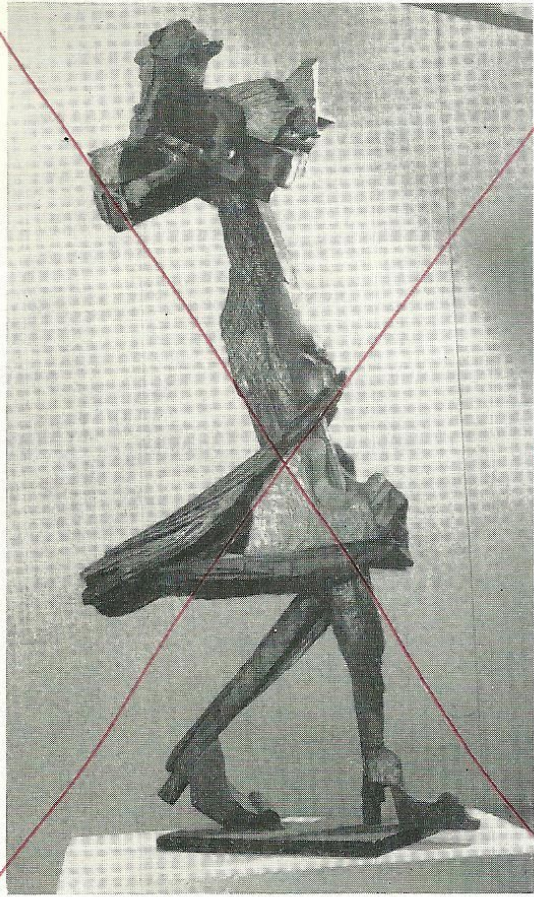
SCALINI Guiditta 1912–1966
57 The Lovers 1950 *Bronze* 23 H

SILVESTRI Lydia b. 1929
58 Torso of P.C. 1961 *Bronze* 28 L
59 Torso of H.W. 1963 *Saltino marble* 22 $\frac{1}{2}$ H

*Private Collection



63



Sold

21



56

3



26

