



8 Bourdelle 1889



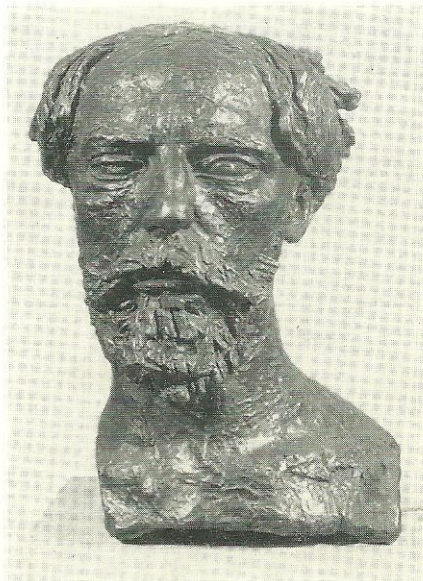
35 Rosso 1893



11 Brancusi 1908



1 Archipenko 1913



15 Epstein 1916



17 Gutfreund 1919

Sculpture

21 October - 21 November 1969

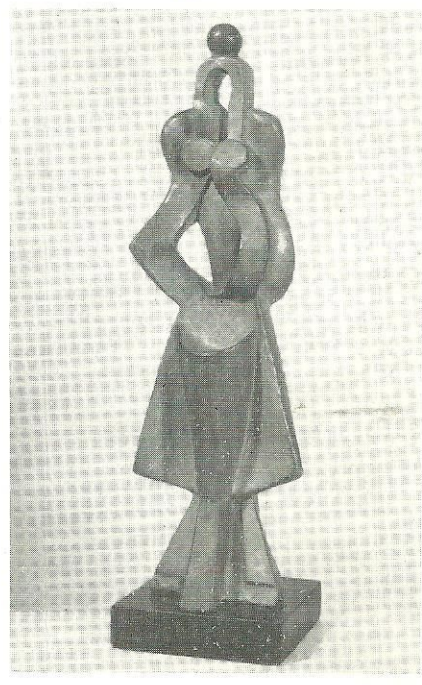
Powice

Grosvenor Gallery

30 Davies Street London W1Y 2JU
telephone 01-629 0891
telegrams Sevenartz London W1

£

	ARCHIPENKO Alexander	1887-1964		inches	STOCK NO.
3335	1	Head illustrated $\frac{3}{6}$	1913	bronze	15½ H (4)
1000	2	Woman Standing illustrated $\frac{2}{6}$	1916	bronze	24½ H (3)
512	3	Standing Figure ●	1917	bronze	14 H (9)
AYRTON Michael b. 1921					
1000	4	Restless Minotaur $\frac{4}{4}$	1963	bronze	12 H (381)
700	5	Pythia $\frac{5}{6}$	1963	bronze	13 H (511)
720	6	Slender Sentinel $\frac{3}{6}$	1963	bronze	24 H (595)
BISTOLFI Leonardo 1859-1933					
250	7	Portrait of a Woman illustrated		bronze	19 (82)
BOURDELLE Emile-Antoine 1861-1929					
3000	8	Beethoven aux Grands Cheveux illustrated $\frac{2}{10}$	1889	bronze	18¾ H (1606)
2000	9	Venus a sa Toilette $\frac{5}{10}$ illustrated	1906	bronze	10⅝ H (1588)
2250	10	Autoportrait $\frac{4}{10}$	1908	bronze	22¾ H (1609)
720 - "CAT" "MAGIScope Box" by Feliciano Boffari					
950 - " " "Ive" by Bourdelle - 21908 ed. $\frac{7}{10}$ stock (1587) 11" R. 32					

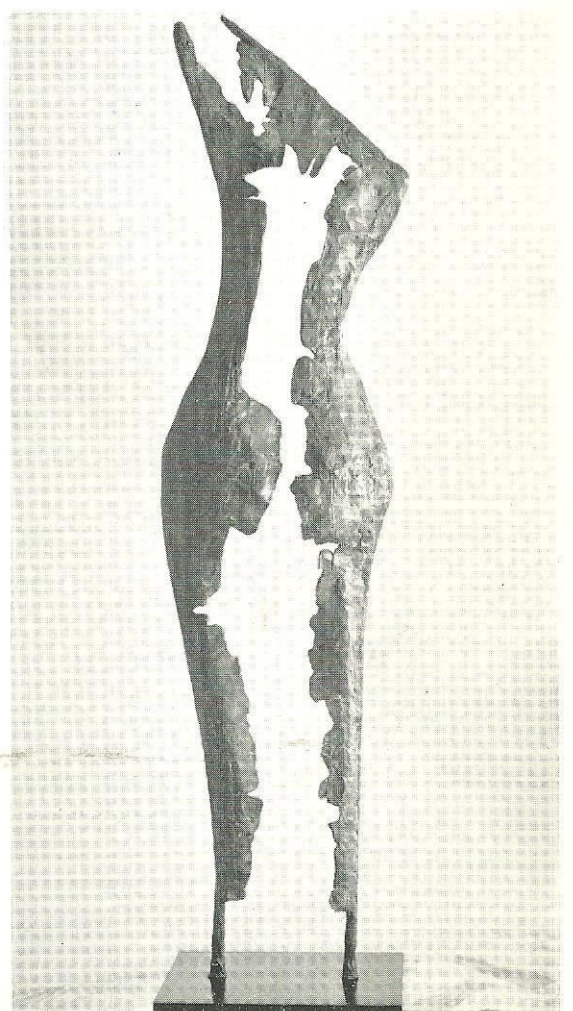


- 9150
BRANCUSI Constantin 1876-1957 *left signed dated B 22, 1908 stock no.* inches
 11 Head of Child *illustrated* ~~1908~~ *1908* bronze (1389) 5 H
- 4200
CASCELLA Andrea b. 1920
 12 Embracing Figures *illustrated* 1961 white marble (519) 33 H
 1750 13 Two part Sculpture marble & stone (1516) 17 L
- 2500
DUMILE b. 1942
 14 In Memoriam *ed.* 1969 bronze relief 23 H



18

- 1500
EPSTEIN Jacob *stock no.* (975) inches
 15 Augustus John *illustrated* 1916 bronze 14 1/2 H
- 5450
FULLARD George b. 1924 (1379)
 16 Striding Woman with Child *illustrated* bronze 32 1/2 H
- 1250
GUTFREUND Otto 1889-1927 (579)
 17 Relief Head *illustrated* 1919 bronze 10 3/4 H
 2500 18 Sailor & Girl *illustrated ed. of 6* 1919 bronze (457) 13 3/4 H



20

HORNER Rudolf b. 1916

700 19 Standing Figure iron 38 1/2 (68)

JOFFRE WHITE Anne

400 20 Earth Form II illustrated bronze 78 3/4 H

250 21 A & E IV ed. 7 no 1/2 bronze 30 1/8 H

350 22 Anticipation only one in this colour polyester 41 3/8

KUMALO Sidney b. 1936

225 23 Reclining Nude I illustrated bronze 12 L (489)

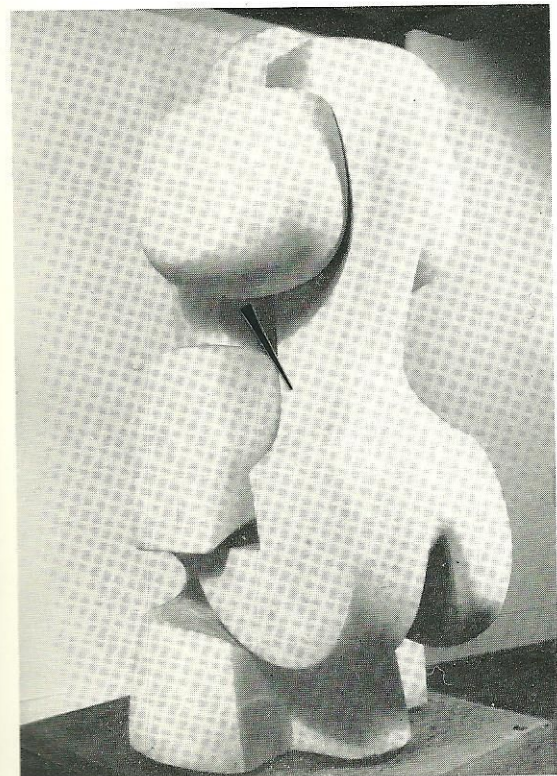
375 24 Standing Figure bronze 32 1/2 H

600 25 Head of King Feisal illustrated 1919 bronze 23 1/2 H (613)

5 MOORE Henry b. 1898 1 of 8 26 Animal Head illustrated 1951 bronze 10 1/2 H (67)

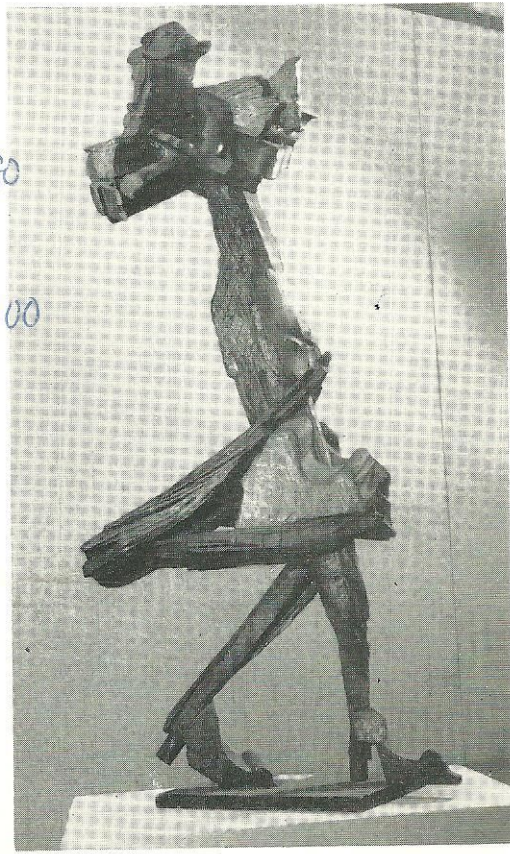


23



Anne Joffre White
excat.
"Togetherness" 11 1/2" H of 80
Bronze
"DONNA" - 25" H of 100
on marble base
Earth Form I
ed. of 5 - 15 out of 100
no. 2/5 - BRONZE
of 80

12



16

NEIZVESTNY Ernst b. 1925

- | | | | | | | | |
|-----|----|--------------------------|-------------|--------|--------|-------|----|
| 250 | 27 | Figure leaning on Elbows | illustrated | c.1954 | bronze | 6½ H | 43 |
| 325 | 28 | Suicide | | c.1954 | bronze | 13½ H | 41 |

PANAMA Marcia

- | | | | | | | | |
|-----|----|----------------|--------|--|-----------------|-------|--|
| 200 | 29 | Figure Study I | 7/6 | | Polished bronze | 11½ L | |
| 250 | 30 | Figure Study 2 | unique | | white marble | 12 L | |
| 175 | 31 | Figure Study 3 | unique | | alabaster | 8½ L | |

PLAZZOTTA Enzo b. 1921

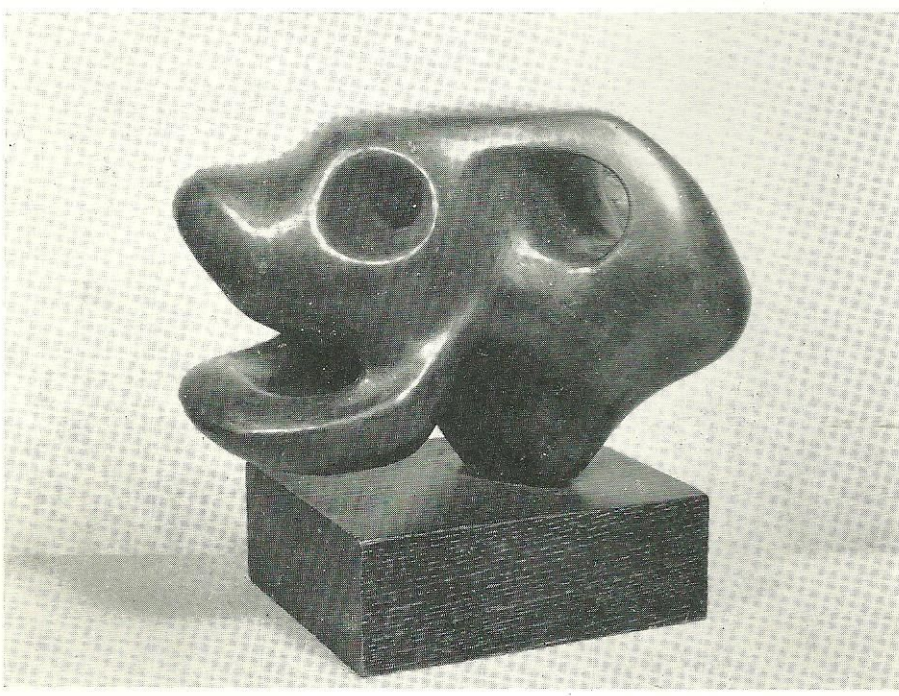
- | | | | | | | | | |
|-----|----|------------------------------|-------------|------|--------|-----------|------------------------------------|---------------------------------------|
| 450 | 32 | The Downfall | illustrated | 8/12 | 1967 | bronze | 22¾ H | one more available of "Downfall" 8/12 |
| 375 | 33 | Hylette | 10/12 | 1968 | bronze | 37 H | no more available of Hylette 12/12 | |
| 350 | 34 | Portrait of Harriet Sergeant | 3/6 | 1968 | bronze | life size | | |

ROSSO Medardo 1858-1928

- | | | | | | | | |
|-------|----|----------------|-------------|------|---------------|-----|------|
| 25000 | 35 | Woman with Hat | illustrated | 1893 | Wax & plaster | 26¾ | 1619 |
|-------|----|----------------|-------------|------|---------------|-----|------|



25



26

27



~~15~~ 150 EX. CAT. "ALUMINIUM MOBILE" by JACOBS

2d. of 6 Copper 115 pesos 55
ed 10 ed 10

SILVESTRI Lydia b. 1929
800 36 Torso of N.N. *illustrated*
750 37 Torso of G.F.A.

1963 Porfirico 20 L
1963 pink marble 18 L

stock no.
(107)
(111)

39

~~100~~ **VANGI Giuliano** b. 1931
38 Due Figure nel Plexiglas

1968 bronze & 19 3/4 x 16 1/2 plexiglas

(1618)

~~650~~ **VILLA Eduardo** b. 1920
39 Head *illustrated*

1965 bronze 27 H

WOTRUBA Fritz b. 1907
2750 40 Figure with raised arms *illustrated*

1956 bronze 33 1/2 H

(304)

~~550~~ EX. CAT. Portrait of Henry Cooper by Wm. Redgrave ~~550~~ of 5

~~650~~ ex cat **Kim James** marble of 650
Jennifer III

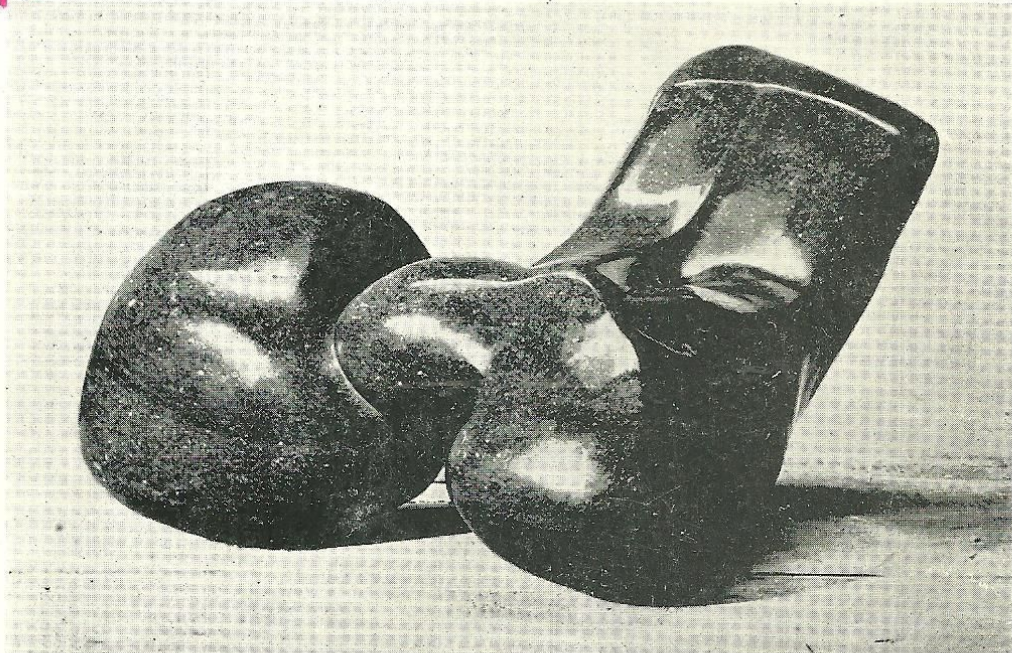
160 - EX. CAT. pol. bronze
"GIRL IN A ROOM" of 160
By Kim James

- 18 3/4" H
including base

- 25 1/2" H
including base



~~R~~³⁶ EX. CAT. Paulk Uezelay 2 part sculpture of 315 2/6



of 250 - EX. CAT. "Sewing Shop IV" - 1967 Gush A Kosmug ed. 2/3 stock. 1687 - Bronze

DRAWINGS EX. CATALOGUE - SCULPTURE EXHIBITION
 October 21st to November 21st. - 1969

Prices.

S Kumalo drawing for sculpture	---£ 45		6741 Stockno.
Dunile "Theme for Bloke" large drawing	---£250	---	14637
" " "Two Seated Nudes"	£100	---	14608
" " "Right The Moon"	£100	---	14611
" " "Double Bass Player"	£ 90	---	14616
" " "Standing Nude"	£ 90	---	14614
" " "String Player"	£ 70	---	14622
" " "Stompie"	£ 80	---	14620
NEIZVESTNY Drawings for sculpture	£100 EACH		2543- <i>Sold 62</i>
S EPSTEIN Watercolour <i>Sold</i>	£ 275		2549
" Pencil and charcoal drawing	→ £ 800		4423 1249
GUTFREUND, Oto - Abstract Drawing	£400	---	5518
" - "Standing Nude"			
	charcoal	£750	---
" - "Study for sculpture"			3319
	Pencil, pen and ink	£700	---
			6568
CASCELLA, Andrea - Pencil and charcoal	£80	---	1454
	Blue ink on paper	£80	---
			2761
S <i>Sold</i> AYRTON, Michael - "Study for Emerging Figure III"			
	Black ink wash	£80	---
			13290