



Plate 4
Cave
1999
2ft 6ins x 4ft
Oil



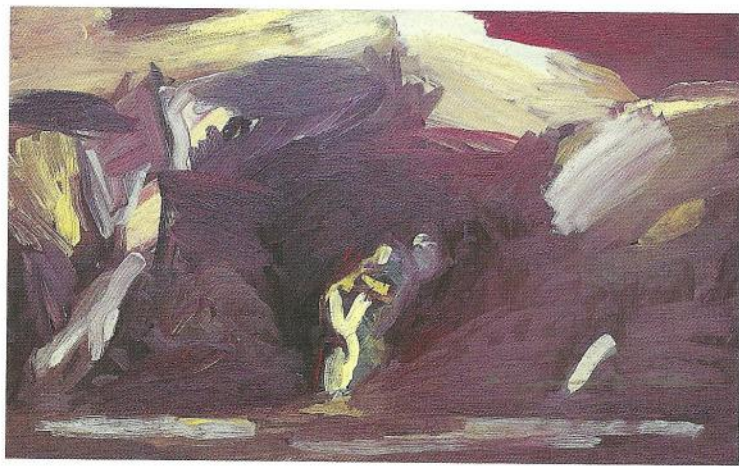
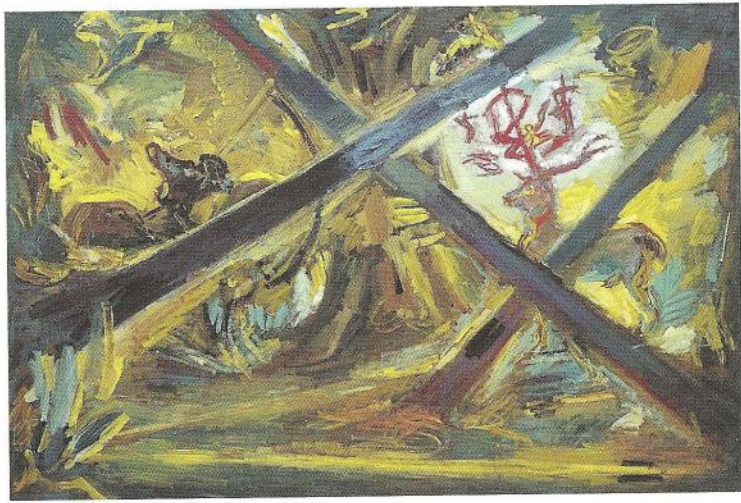


Plate 5
Stag
2000
6ft x 9ft
Oil





Thomas Newbolt

- 1951** Born in London
- 1970-74** Camberwell School of Art and Crafts
- 1974-75** Italian Government Scholarship, Florence, to paint and study frescoes
- 1979-81** Artist in Residence (Fellow Commoner in Creative Arts) Trinity College, Cambridge
- 1981-83** Harkness Fellow. Two years to paint and travel in the United States

Teaching Drawing unless otherwise stated

- 1975-76 & 1978-81** Camberwell School of Arts & Crafts
- 1982** Visiting Artist, McIntire Dept. of Art, University of Virginia, Charlottesville, USA
- 1983** Visiting Artist, School of Fine Arts, University of Wisconsin-Milwaukee, Milwaukee, USA.
Drawing & Painting
- 1990** Two week drawing marathon at the Studio School of Drawing, Painting and Sculpture, New York, USA
- 1993-96** City and Guilds of London Art School
- 1985-2000** Cambridge College of Arts and Technology now Anglia Polytechnic University, Drawing, Painting, Printmaking and Art History (Art History Field Trips to Italy 1990 and 1999, Germany 1996, Belgium 1996 and 2000 and Holland 2000)

One person e

- 1986** Brow
- 1988** Brow
Tatis
- 1990** Brow
- 1991** Brow
- 1992** Brow
- 1994** Brow
- 1996** Brow
- 1997** Brow
by Ju
- 1998** Brow
- 2000** Brow

Group exhibi

- 1974-77** Rolan
- 1977-2000** Brow
- 1983** Foru
- 1984** Tatis
- 1988** Tatis
- 1989-97** Brow
- 1992** Tatis
- 1995** Bell
- 1996** Disc
(Mar

One person exhibitions

- 1986 Browse and Darby, London
- 1988 Browse and Darby, 40 aquatints
Tatistcheff, New York, Browse and Darby
- 1990 Broughton House, Cambridge, aquatints
- 1991 Browse and Darby
- 1992 Broughton House, aquatints
- 1994 Broughton House
- 1996 Broughton House
- 1997 Browse and Darby, catalogue with introduction
by Julian Bell
- 1998 Broughton House
- 2000 Broughton House

Group exhibitions

- 1974-77 Roland Browse and Delbanco, London
- 1977-2000 Browse and Darby
- 1983 Forum Gallery, New York, Drawings with Peter de Francia
- 1984 Tatistcheff, New York, Drawings
- 1988 Tatistcheff, Los Angeles, Paintings
- 1989-97 Browse and Darby at Chicago Art Fair
- 1992 Tatistcheff, New York, Paintings with Helen Napper
- 1995 Belloc Lowndes, Chicago, Paintings and Prints
- 1996 Discerning Eye, Mall Galleries, London, Critic's Choice
(Martin Gayford) and Prizewinner

Thomas Newbolt

28 November – 20 December 2000

Price List

	£		£
1.	12,500	9.	5,000
2.	15,000	10.	5,000
3.	15,000	11.	4,000
4.	8,000	12.	6,000
5.	12,500	13.	6,000
6.	9,000	14.	6,000
7.	9,000	15.	8,000
8.	4,500		

Grosvenor Gallery (Fine Arts) Limited

18 Albemarle Street, London W1S 4HR Tel: (0044) 020 7629 0891 Fax: (0044) 020 7491 4391
E-mail: ggfa@dial.pipex.com website: www.grosvenorgallery.com

THOMAS NEWBOLT

**MARY ANN PRIOR IN ASSOCIATION WITH
GROSVENOR GALLERY (FINE ARTS) LIMITED**

2000

THOMAS NEWBOLT

Recent Paintings

**MARY ANN PRIOR IN ASSOCIATION WITH
GROSVENOR GALLERY (FINE ARTS) LIMITED**
18 Albemarle Street, London W1X 3HA
Telephone: 0171 629 0891
Facsimile: 0171 491 4391
e-mail: ggfa@dial.pipex.com

Plate 1
Nude
2000
5ft 6ins x 5ft
Oil

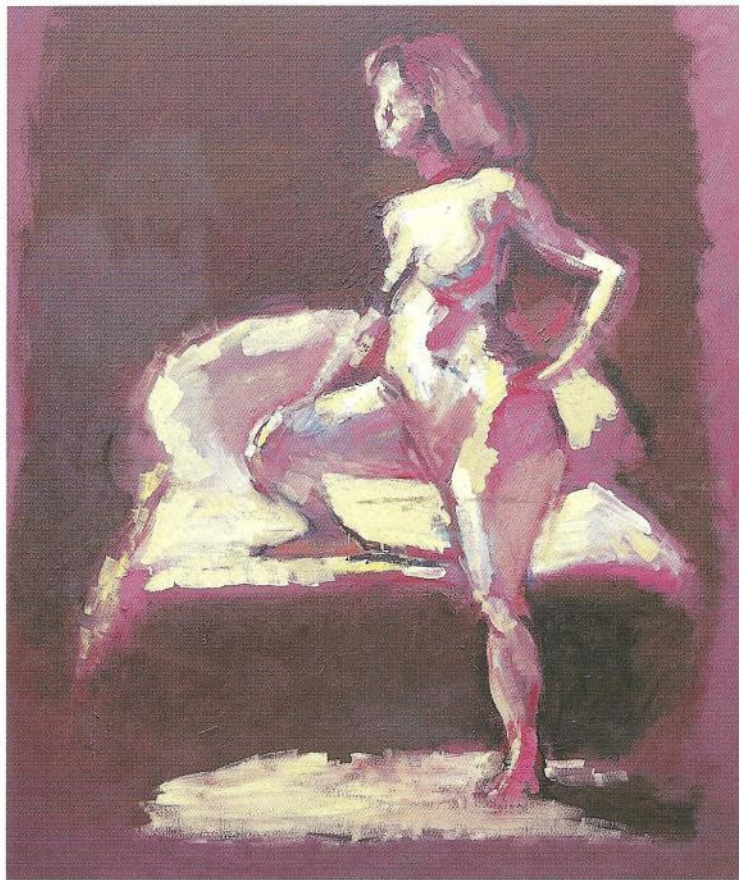


Plate 2

Trees

2000

3ft 6ins x 5ft

Oil





Plate 3

Stag

1998

6ft 6ins x 7ft 6ins

Oil

