

PRICED

# CERVELLI

20 January - 12 February 1966



## Grosvenor Gallery

28, 30 Davies Street London W1  
telephone  
Mayfair 0891  
telegrams  
Sevenartz London

The tragic death of Enrico Cervelli, in a motor car accident, at the age of 34, cut off a brilliant talent. It is impossible to predict where the many roads he traversed would have led to, or whether he would have concentrated his gifts in any of the media he explored.

Born in Rome in 1927, he originally studied architecture and stage designing. He immersed himself in the arts and techniques of the past, which gives his work a strange evocative character, the combination of an essentially modern spirit identified with the long history of visual expression. In the probing, vigorous, sophisticated personality evident in all his work, Cervelli is a Renaissance figure. He worked at great pace, fascinated by unusual materials and ancient techniques, often seeking inspiration from such diverse sources as Africa, Byzantium, Catacomb graffiti and the personal excavation of Etruscan sites.

This exhibition includes wooden sculpture-carved totems pitted with nails, reminiscent of African fetish-art; carved and painted cork reliefs, again with nails or repoussée copper details, some related to primitive art or Byzantine mosaics; paintings on canvas and board in which an encaustic wax technique is used with gold leaf to decorative effect; and the series entitled *Lettera Magica*, an amalgam of many techniques.

In all of Cervelli's work there is evidence of his formative roots. The dramatic brilliance which springs from his theatrical training is controlled by taste and discretion. From his architectural training he retained a precise sense of form and balance, particularly strong in the *Lettera Magica* series. The result is a personal mixture of directness and mystery, of gaiety and solemnity, of simplicity and complexity.

#### ENRICO CERVELLI

Born Rome 1927. Died in motor car accident in 1961. Studied architecture and stage-design at the Accademia di Belle Arti, Rome.

One-man exhibitions:

1954, 56 and 59	Schneider Gallery, Rome
1955	Numero Gallery, Florence
1956	O'Hana Gallery, London
1957	L'Incontro Gallery, Rome
1960	Savage Gallery, London
1961	Poghani Gallery, Rome

#### SCULPTURE AND CORK RELIEFS

			ins.
300	1 Totem	wood and copper	52½ h.
300	2 Totem	wood and copper	53 h.
450	3 Uomo e Donna (Illustrated on front cover)	painted cork and copper	36 × 34
200	4 Compositione	painted cork and copper	28 × 13
250	5 Harar	painted cork and copper	37½ × 14½
250	6 Nozze di Caanan 1959	painted cork and copper	18½ × 39
400	7 Grande Rito 1959	painted cork and copper	35 × 21½
250	8 San Francesco	painted cork and copper	34½ × 15½
250	9 L'Erede di un Trono 1959	painted cork	44 × 18¼
580	10 Una Dea (Minerva) Tra gli Apostoli 1959	painted cork	32 × 49
600	11 Una Grande Religione	painted cork	32 × 48
250	12 Mose Faraone e Il Vitello D'oro 1959	painted cork and copper	18½ × 31½

#### ENCAUSTIC PAINTINGS

100	13 Magico	canvas	12 × 12
175	14 Cattedrale	board	27 × 19
100	15 Compositione	canvas	11½ × 13½

			ins.			ins.	
130	16	Sinfonia Astratta	canvas	15½ × 23½	130	36 Lettera Magica	13½ × 27½
130	17	Segui Magici 1959	canvas on board	13½ × 17½	130	37 Rito Magico con Ariete	17¾ × 26
125	18	Sigillo Solare 1959	board	15 × 21½	80	38 Sigillo Magico	9 × 21½
400	19	Ovale Magico 1959 (Illustrated on back cover)	board	28 × 39	100	39 Lettera Magica	12½ × 16
400	20	Composizione Astratta 1959	canvas	36 × 55	150	40 Grande Lettera Magica con Rito	27¾ × 39½
500	21	Grande Pagina Biblica 1959	board	39½ × 59	150	41 Lettera Magica e Oro	27½ × 39¾
400	22	Pagina Magica 1959	canvas	39½ × 59¼	150	42 Grande Lettera Magica	27½ × 39¾
200	23	Pagina di Guerra 1959	board	39¼ × 39	140	43 Grande Lettera Magica con Sigillo	25¼ × 39
200	24	Pagina di Guerra 1960	board	39¼ × 39¼	150	44 Grande Lettera Magica	27½ × 39½
175	25	Composizione	board	27¼ × 37½	140	45 Lettera Magica	30 × 19¼
185	26	Composizione	canvas	39½ × 29½	150	46 Grande Lettera Magica	27¼ × 39¾
175	27	Pagina di Pace 1959	board	27½ × 39¼	140	47 Lettera Magica	22¾ × 32
150	28	Oro e Sensibilita 1959	board	23¾ × 31½	140	48 Lettera Magica	22½ × 32
150	29	Legge Sul Mar Morto 1958	board	23½ × 31¼	150	49 Lettera Magica	23½ × 33½
					150	50 Lettera Magica	23½ × 34
					150	51 Lettera Magica – Unico Originale	25½ × 34
					150	52 Lettera Magica	24½ × 35½
					150	53 Lettera Magica – Primo Originale	25½ × 36
					160	54 Grande Testamento <i>Sold.</i>	38½ × 28¼

and a group of small encaustic paintings

#### LETTERA MAGICA SERIES 1960

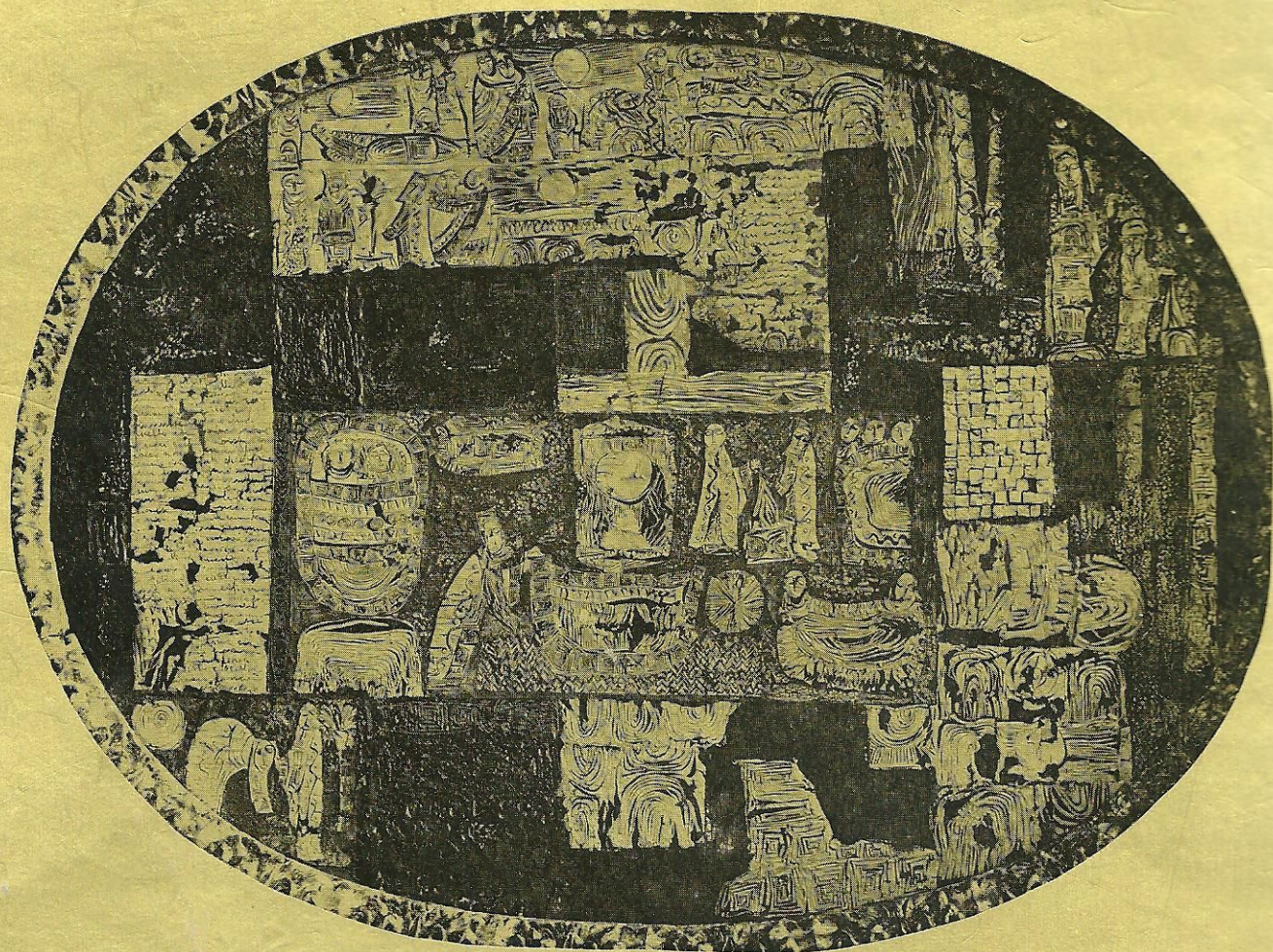
mixed media – paper on canvas

80	30	Lettera Magica	14½ × 20
120	31	Lettera Magica	19 × 27
150	32	Lettera Magica con Rito	28 × 40
100	33	Lettera Magica	16 × 20
120	34	Lettera Magica	19 × 27
150	35	Lettera Magica con Rito	13 × 16¼

#### ARCHITECTURAL STUDIES

75	55	Composizione	encaustic on paper	13¾ × 19¾
75	56	Composizione	oil on waxed paper	13½ × 18¾
75	57	Composizione	oil on waxed paper	13½ × 18¾
75	58	Composizione	mixed media	19¾ × 13¾

*small en. cat. paintings: top row (x) fso ed all else fso ed*



### FORTHCOMING EXHIBITIONS

- |             |  |          |  |
|-------------|--|----------|--|
| 1 February  | HARTMANN - paintings   | 29 March | KARL WESCHKE - paintings                 |
| 15 February | Two Sculptors and Two Painters<br>KOENIG                      KENETT<br>DOLENEC                    LORRI | 13 April | BRIAN WALL - sculpture                   |
| 1 March     | GUTFREUND - Cubist sculpture   | 26 April | FLEUR COWLES - paintings                 |
| 15 March    | DAVID BURLIUK - paintings  | 10 May   | SOUZA - paintings Retrospective          |
|             |  | 7 June   | MICHAEL AYRTON - paintings and sculpture |