



Goncharova: Les Femmes Espagnoles 1916

*Sold.*

## 20th Century Paintings and Sculpture

Part I 2 July – 27 July

Part II 28 August – 21 September 1968

## Grosvenor Gallery

28/30 Davies Street London W1

telephone 01-629 0891

telegrams Sevenartz London W1



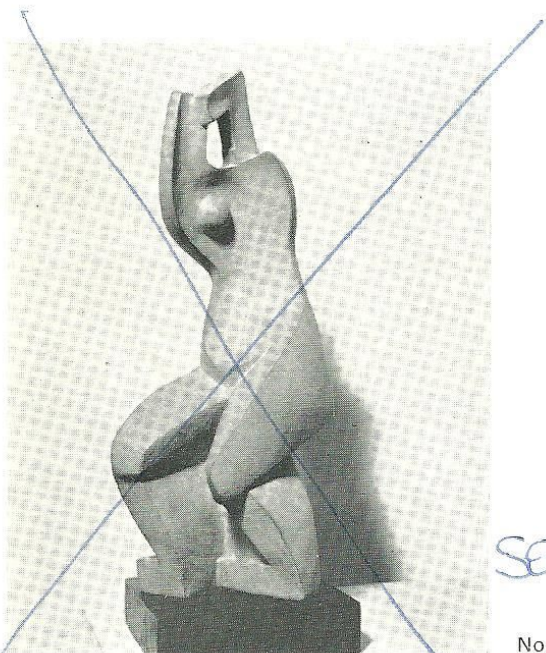
**APPEL b.1921**

1 Head 1956 oil on canvas 39 inches  $\times 27\frac{1}{4}$

**ARCHIPENKO 1887-1964**

2 Standing Figure 1916 bronze 12 high

3 Woman Combing Her Hair 1913 bronze  $19\frac{1}{2}$  high  
*illustrated*



No. 3

**BAJ b.1924**

4 Furniture with Three Drawers fabric and wood collage on canvas 38  $\times$  51

5 Portrait oil on canvas 47  $\times$   $38\frac{3}{4}$

**BAUCHANT 1873-1958**

6 Figure with Lyre 1933 oil on canvas  $23\frac{1}{2}$   $\times$   $28\frac{3}{4}$

7 French Landscape 1930 oil on canvas 27  $\times$  39

**BAUMEISTER 1889-1955**

8 Blue-Green Composition oil on board 12  $\times$   $15\frac{3}{4}$

**BISSIERE b.1888**

9 Composition 1957 oil on canvas  $7\frac{1}{4}$   $\times$   $8\frac{1}{2}$

**BOCCIONI 1876-1957**

10 Study for 'Those Who are Going' 1911 oil on board  $14\frac{1}{2}$   $\times$   $21\frac{1}{2}$

11 Two Sleeping Heads c.1910 pencil  $6\frac{1}{2}$   $\times$   $9\frac{1}{2}$

**BRANCUSI 1876-1957**

12 Head of a Child 1908 bronze 5 high  
*illustrated*

No. 12

**BURLIUK 1882-1967**

13 Nude on Horse oil on board  $11\frac{1}{2}$   $\times$   $15\frac{1}{2}$



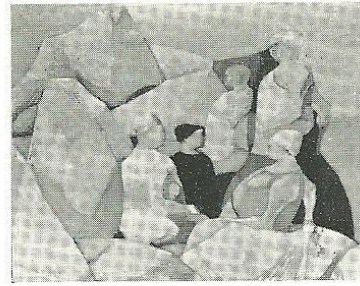
**CAMPIGLI b.1895**

14 Diabolo 1953 oil on canvas 40 × 52 $\frac{1}{2}$

**CASCELLA Andrea b.1920**

15 3 part Sculpture 1961 marble 28 long

16 Auschwitz Link bronze 26 high



No. 20

**CHAGALL b.1887**

17 Girl Riding Cockerell 1955/6 mixed media 39 × 29

**CH'I PAI-SHIH 1861-1957**

18 Lotus watercolour 44 × 16

**CONSAGRA b.1920**

19 Leaf Abstraction 1959 bronze 15 high

**CREMONINI b.1925**

20 Women on the Rocks 1955 oil on canvas 43 × 52  
*illustrated*

21 l'Albero oil on canvas 21 $\frac{1}{4}$  × 28 $\frac{3}{4}$

**DERAIN 1880-1954**

22 Design for Tapestry pen 24 $\frac{1}{4}$  × 46

23 Three Figures wood relief 24 × 45  
*illustrated*



No. 23





No. 25

**ETROG b.1933**

24 Bird That Does Not Exist II 1965 bronze  $10\frac{1}{2} \times 18\frac{1}{2}$

**FALK 1886-1958**

25 Trees oil on canvas 21  $\times$  32  
*illustrated*

**FRIESZ 1879-1949**

26 Two Women in Landscape 1935 oil on canvas  $21\frac{1}{4} \times 25\frac{1}{2}$

**GONCHAROVA 1881-1962**

27 Femmes Espagnoles  
5 fold screen oil on canvas 96  $\times$   $30\frac{1}{2}$   
*illustrated on cover* (each)

**GRECO b.1913**

28 Ritratto bronze 20 high

29 Nude pen  $17\frac{3}{4} \times 11\frac{3}{4}$

**GRUBER 1912-1948**

30 Studio Interior 1946 oil on canvas  $63\frac{1}{2} \times 51$



No. 31

**GUTFREUND 1889-1927**

31 Sailor and Girl *illustrated* 1919 bronze  $13\frac{3}{4}$  high  
32 Standing Nude charcoal  $17\frac{1}{4} \times 11\frac{3}{4}$   
33 Still Life chalk  $10\frac{3}{4} \times 9\frac{1}{2}$

**GUTTUSO b.1912**

34 Landscape with Lovers chalk 19  $\times$  27

**HARTUNG b.1904**

35 Black and Blue Abstract 1958 chalk  $19\frac{1}{2} \times 25$

**HEPWORTH b.1903**

36 Stringed Figure (Crucible) 1956 bronze 13 high

**HOFLEHNER b.1916**

37 Standing Figure bronze 36 high

**JAWLENSKY 1864-1941**

38 Landscape with Gate 1914 oil on canvas  $14\frac{1}{2} \times 10\frac{3}{4}$

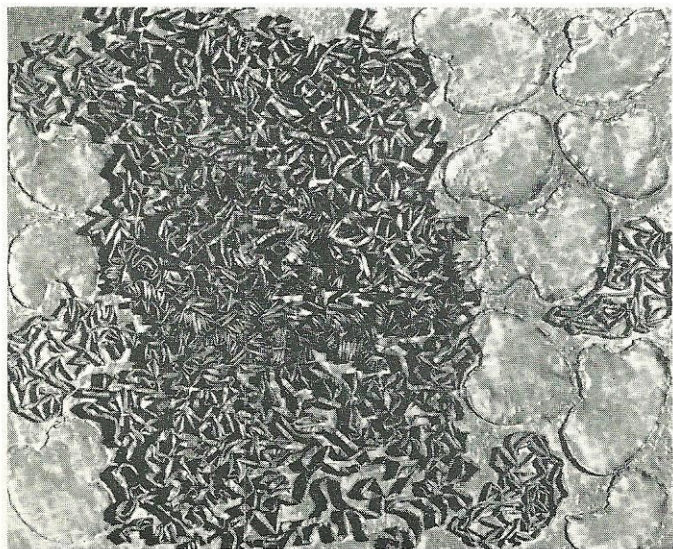




No. 39

**KANDINSKY 1866-1944**

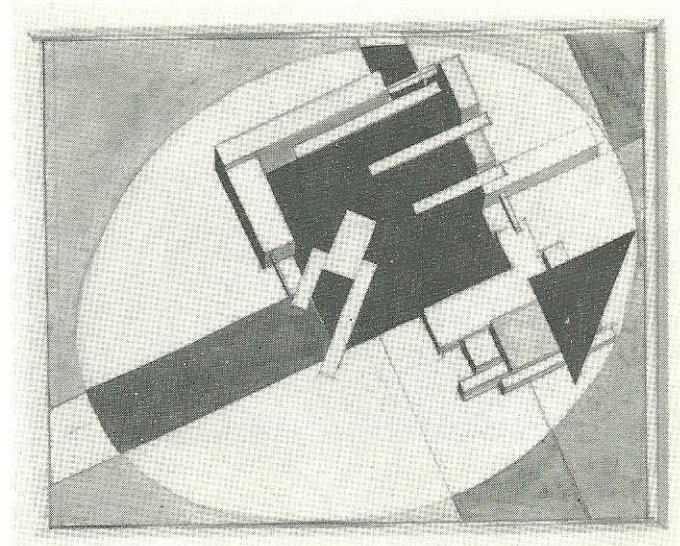
39 Abstract Landscape 1915/16 watercolour 18½ × 25  
*illustrated*



No. 40

**KEMENY 1907-1965**

40 Air and Air 1956 copper 39 × 47  
*illustrated*



No. 42

**LISSITZKY 1896-1941**

41 Proun Study 1A (Proun S.K.) 1919 pencil, gouache 6 × 7⅝

42 Proun Study 1E c.1920 pencil, gouache 7⅞ × 9  
*illustrated*

**MAGRITTE 1898-1967**

43 La Femme du Fantome 1946 oil on canvas 45 × 64  
*illustrated*

44 Le Corps Humain 1927/8 oil on canvas 28½ × 21

**MARINI b.1901**

45 Abstract Horse bronze 16¾ high

**MATTA b.1912**

46 Fantasia oil on canvas 25¾ × 31½

**MOHOLY-NAGY 1895-1946**

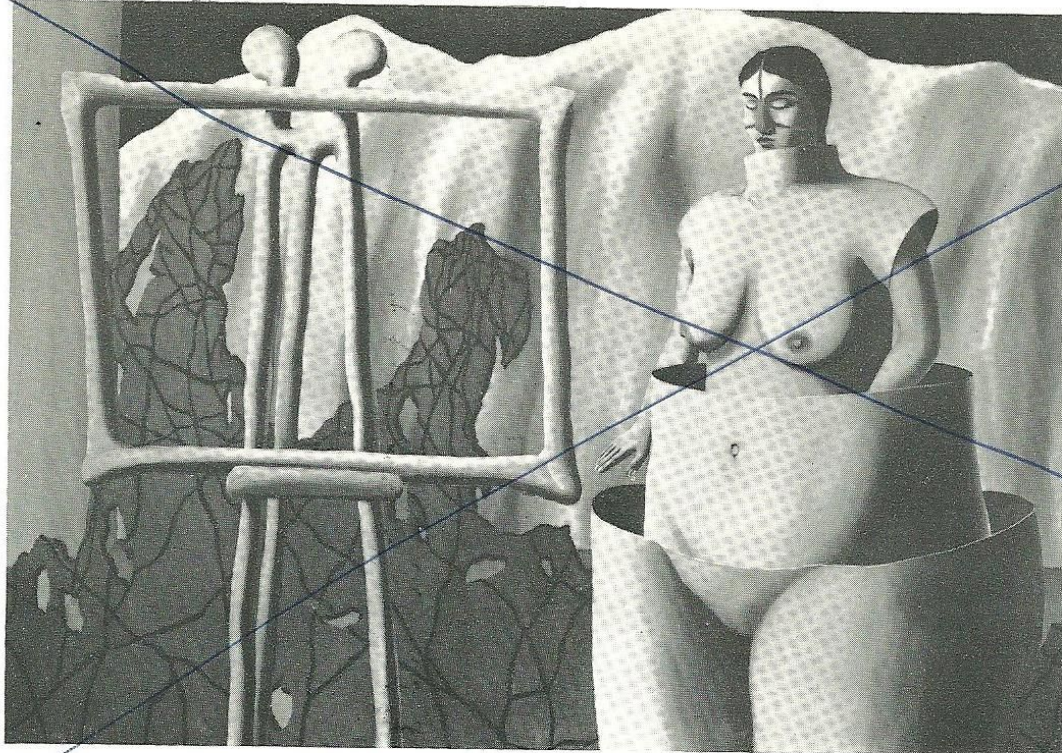
47 A.15 1932 oil on metal 25¾ × 19¾

**MOORE b.1898**

48 Animal Head 1956 bronze 10½ high

49 Upright Motive: Maquette No. 11 1955 bronze 12½ high





*Sold.*

No. 43

- |    |                                   |      |        |         |
|----|-----------------------------------|------|--------|---------|
| 50 | Upright Motive:<br>Maquette No. 3 | 1955 | bronze | 10 high |
| 51 | Leaf Figure No. 1                 | 1952 | bronze | 10 high |
| 52 | Leaf Figure No. 2                 | 1952 | bronze | 10 high |

**MUCHA 1860-1939**

- |    |        |      |        |           |
|----|--------|------|--------|-----------|
| 53 | Hamlet | 1899 | poster | 80½ × 29½ |
|----|--------|------|--------|-----------|

**MUSIC b.1909**

- |    |                      |      |               |          |
|----|----------------------|------|---------------|----------|
| 54 | Horses and Landscape | 1951 | oil on canvas | 31½ × 39 |
|----|----------------------|------|---------------|----------|

**NEIZVESTNY b.1925**

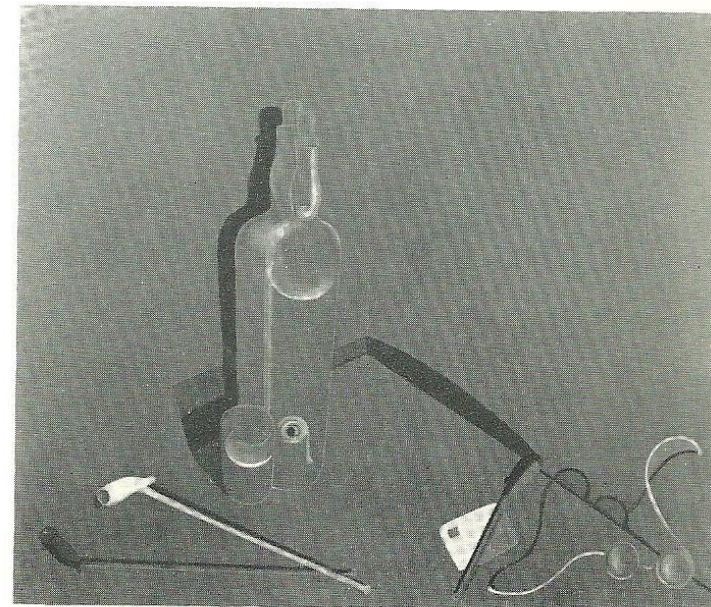
- |    |             |  |        |           |
|----|-------------|--|--------|-----------|
| 55 | Suicide     |  | bronze | 13¾ high  |
| 56 | Electricity |  | ink    | 23½ × 35½ |

**NICHOLSON b.1894**

- |    |                |         |              |         |
|----|----------------|---------|--------------|---------|
| 57 | Painted Relief | 1943/44 | oil on board | 32 × 39 |
|----|----------------|---------|--------------|---------|

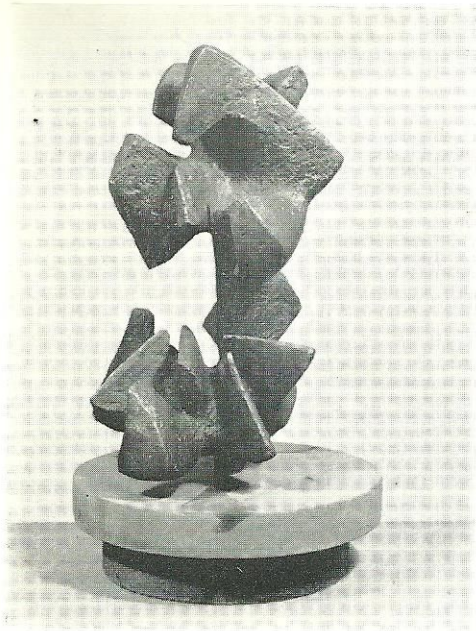
**OZENFANT 1886-1966**

- |    |  |      |               |         |
|----|--|------|---------------|---------|
| 58 | Still Life - Bottle and Pipe<br><i>illustrated</i> | 1930 | oil on canvas | 23 × 28 |
|----|--|------|---------------|---------|



No. 58





No. 59

**PENALBA b.1918**

59 Entincella  
*illustrated*

bronze 16 high

**PERMEKE 1896-1952**

60 Jabeke

oil on canvas 15 × 17

61 Standing Nude

chalk 57 × 29½

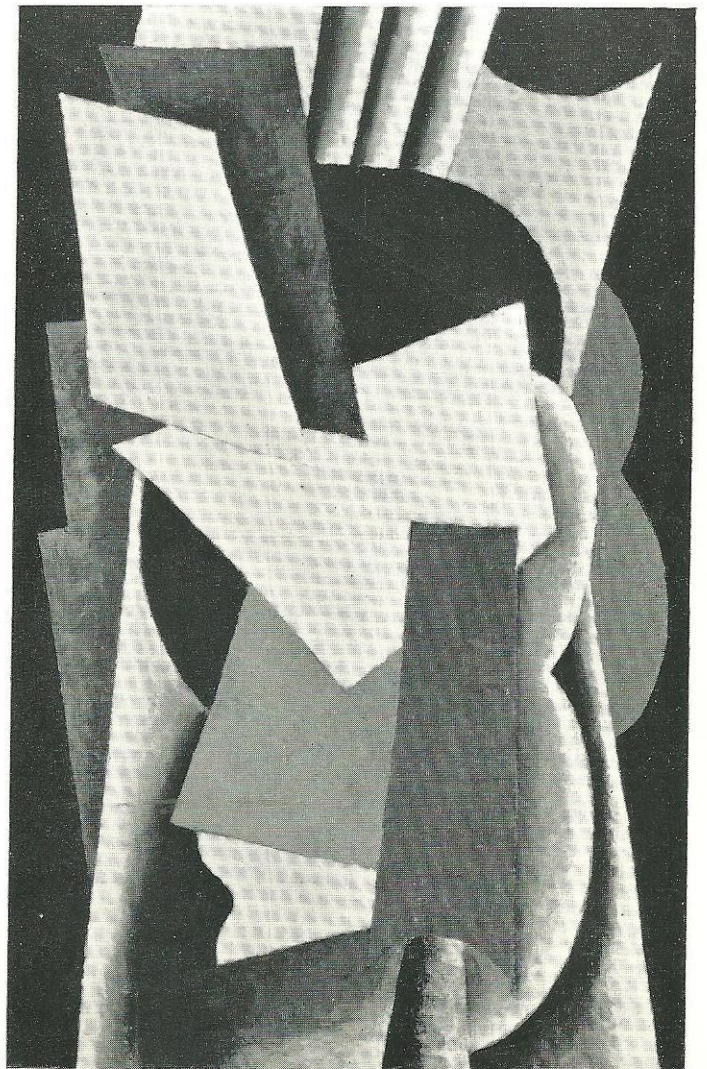
**POPOVA 1889-1924**

62 Still Life

c. 1916 oil on canvas 41½ × 27½

*illustrated*

No. 62





**RABIN b.1928**

63 Georgia I

1962 oil on canvas  $27\frac{1}{2} \times 19\frac{3}{4}$

64 London

1962 oil on canvas  $39 \times 31\frac{1}{2}$

**RILEY Briget b.1931**

65 Twist

oil on board  $48 \times 46\frac{1}{2}$

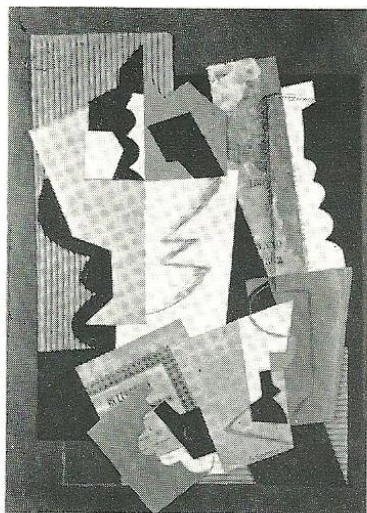
66 Broken Rings

oil on board  $45 \times 44$

**RUBIN b.1893**

67 Three Figures

1924 oil on canvas  $43\frac{1}{2} \times 38$



No. 68

**SEVERINI 1883-1953**

68 Still Life  
*illustrated*

collage  $30 \times 21\frac{1}{2}$

**SCHWITTERS 1887-1948**

69 Composition

collage  $31 \times 26\frac{1}{2}$

**SIRONI 1885-1961**

70 Moltiplicazione

1947 oil on canvas  $39\frac{1}{2} \times 37$



No. 71

71 Composition  
*illustrated*

1956 oil on canvas  $43 \times 35$

**de SMET Gustave 1877-1943**

72 Landscape with Cottages

oil on canvas  $33 \times 39\frac{1}{4}$





No. 73

**de SMET Leon 1881-1966**

73 Still Life with Doll 1919 oil on canvas 25 × 30  
*illustrated*



No. 74

74 Still Life with Flowers 1919 oil on canvas 25 × 30  
*illustrated*

**TAJIRI b.1923**

75 Abstract Form bronze 15 high

**TCHELITCHEW 1898-1957**

76 Figure c.1926 oil on canvas 36½ × 25¾

**TOBEY b.1890**

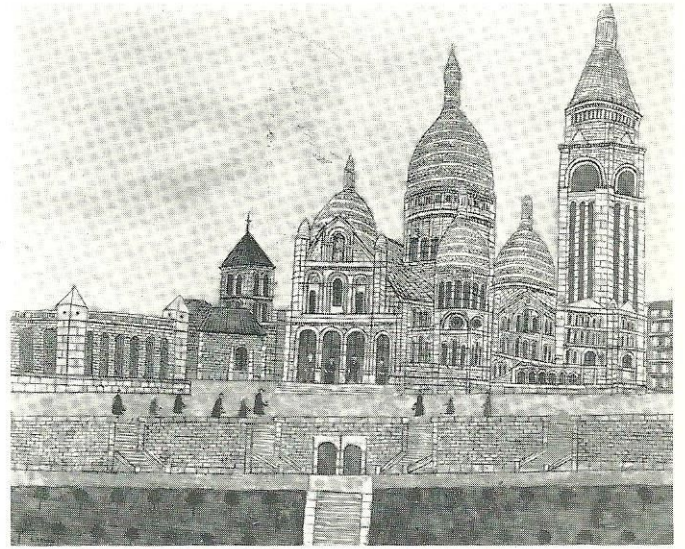
77 Abstract 1957 ink 24 × 18

78 Abstract 1957 gouache 17 × 11½

**VAN DEN BERGHE 1883-1939**

79 House by the Lake oil on canvas 19 × 22

80 Artist and Wife seated at Table oil on canvas 54 × 43½



No. 81

**VIVIN 1859-1935**

81 Sacre Coeur oil on canvas 28 × 25¼  
*illustrated*

**WINTER Fritz b.1905**

82 Mit Blau 1955 oil on paper 28¾ × 38¾



Future Exhibitions

30 July – 24 August      FRIENDS AND FAMOUS PEOPLE  
Portraits in sculpture, painting  
and drawing

24 September – 19 October      BRIAN WALL  
Recent Sculpture

Works available by

|            |              |               |                |
|------------|--------------|---------------|----------------|
| Afro       | Chi-Pai Shih | Hofflehner    | Ozenfant       |
| Appel      | Clavé        | Jawlensky     | Permeke        |
| Archipenko | Clough       | Kandinsky     | Pignon         |
| Ayrton     | Consagra     | Kaplan        | Popova         |
| Baj        | Cremonini    | Kemeny        | Oskar Rabin    |
| Barnabe    | Derain       | Kremagne      | Medardo Rosso  |
| Bauchant   | Epstein      | Larionov      | Schwitters     |
| Baumeister | Erté         | Wyndham Lewis | Segonzac       |
| Biasi      | Falk         | Lissitzky     | Severini       |
| Blatas     | Goncharova   | Magritte      | Viera da Silva |
| Boccioni   | Greco        | Manzu         | Tajiri         |
| Bombois    | Grigoriev    | Marini        | Tchelitchew    |
| Brancusi   | Gruber       | Mesens        | Viani          |
| Burliuk    | Gutfreund    | Moore         | Vivin          |
| Campigli   | Hamaguchi    | Mucha         | Vlaminck       |
| Carra      | Hepworth     | Music         | Wall           |
| Cascella   | Hitchens     | Neizvestny    |                |
| Chagall    | Hoffmeister  | Nicholson     |                |