



VICTOR NEWSOME

Grosvenor Gallery

Victor Newsome

Recent Paintings
& Drawings

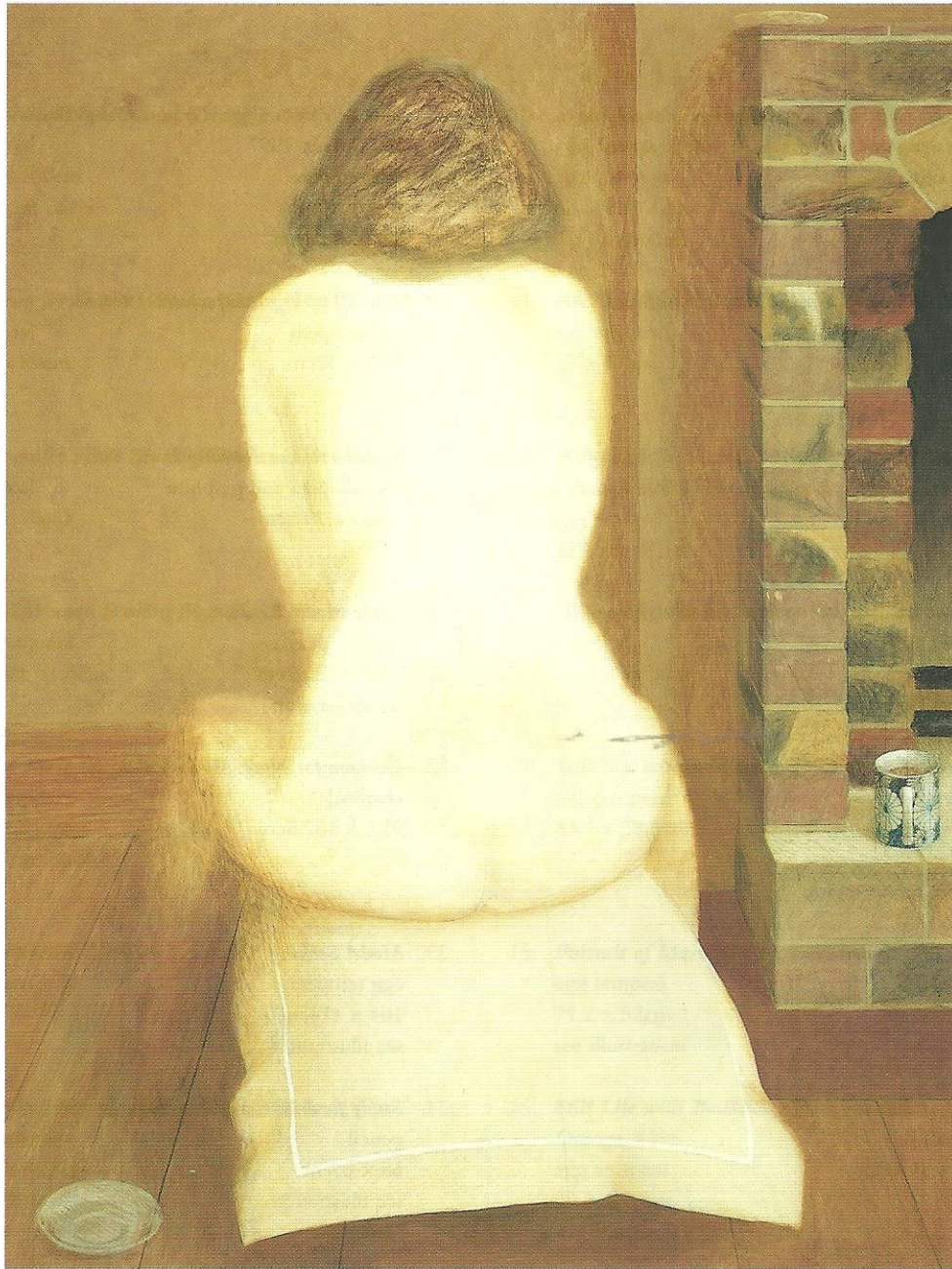
1 - 24 April 1998

Victor Newsome

Recent Paintings & Drawings 1 – 24th April 1998

1. *Cartoon of Nude Model Relaxing*, 1995
charcoal
122 x 160cm
see front cover
2. *Cartoon for Seated Woman Bathing Feet II*, 1998
charcoal
145 x 87cm
3. *Cartoon for Nude Seated Woman*, 1998
charcoal
138 x 90cm
4. *Seated Woman Bathing Feet II*, 1998
egg tempera
152.5 x 91.5cm
5. *Seated Nude (Back View)* 1998
egg tempera
122 x 91.5cm
see illustration
6. *Nude Seated Woman*, 1998
egg tempera
106.7 x 73.7cm
7. *Anne Summers Kneeling Among Books*, 1998
egg tempera
92.7 x 122cm
see illustration
8. *Cartoon for Anne Summers Kneeling Among Books*, 1997
charcoal
85 x 122cm
9. *Seated Woman Bathing Feet*, 1992
egg tempera
77.7 x 38.7cm
10. *Still Life with a Chrysanthemum Mug, Bottle and Saucer*, 1998
egg tempera
68.5 x 49.5cm
see illustration
11. *Reclining Nude, Rear View Fragment*, 1986
egg tempera
27 x 67cm
12. *Still Life, Potted Hyacinth, Egg, Pear, Glass of Red Wine and Bowl*, 1998
egg tempera
119.5 x 58.5cm
13. *Cartoon for Model Seeking Tobacco II*, 1994
charcoal
67.3 x 52.3cm
14. *Still Life with White Mug*, 1994
egg tempera
33.7 x 28.3cm
15. *Portrait of Marie Carr*, 1998
egg tempera
71.2 x 52cm
see illustration
16. *Still Life with Bowl, Saucer, Eggs and Orange*, 1998
egg tempera
29.8 x 40cm
see illustration
17. *Still Life with Orange in a Bowl, Mug of White Coffee and Egg*, 1998
egg tempera
28 x 33cm
18. *Still Life with Glazed Bowl*, 1995
egg tempera
20.3 x 20.3cm

19. *Still Life with Two Eggs, Orange, Saucer and Alabaster Bowl*, 1998
egg tempera
29.7 x 38.7cm
20. *Portrait Study of Marie Carr, left profile*, 1990
charcoal
37.5 x 27.7cm
21. *Portrait Study of Anne O'Connor, right profile*, 1990
charcoal
35.3 x 28cm
22. *Portrait Study of Anne O'Connor, right profile smiling*, 1990
egg tempera
35.3 x 28cm
23. *Portrait of Anne O'Connor*, 1998
egg tempera
40.7 x 30.5cm
24. *Study of a Seated Nude*, 1990
charcoal
57.8 x 35cm
25. *Study of a Seated Nude*, 1990
charcoal
61.6 x 51.4cm
26. *Still Life with Mug of Black Coffee and an Orange*, 1995
egg tempera
18 x 23cm
27. *Still Life with Orange in a Bowl*, 1996
egg tempera
17.5 x 17.5cm
28. *Still Life with Eggs, Orange, Pear, Bowl and Saucer*, 1997
egg tempera
23.5 x 37cm
see illustration
29. *Tilted Pot With Hyacinth*, 1996
egg tempera
33.5 x 32cm
30. *Seated Woman Bathing Feet*, 1993
egg tempera and graphite
144.5 x 79.5cm
31. *Nude Model Relaxing*, 1995
egg tempera
90.2 x 120.7cm
see illustration
32. *Cartoon for Nude Model Relaxing*, 1995
charcoal
91.5 x 152.5cm
33. *Model Seeking Tobacco*, 1997
egg tempera
104 x 114cm
see illustration
34. *Study for Model Seeking Tobacco*, 1997
pencil
58 x 65cm
see illustration
35. *Cartoon for Model Seeking Tobacco*, 1997
charcoal
105 x 113cm



5. **SEATED NUDE** (Back View)

egg tempera
122 x 91.5cm
1998

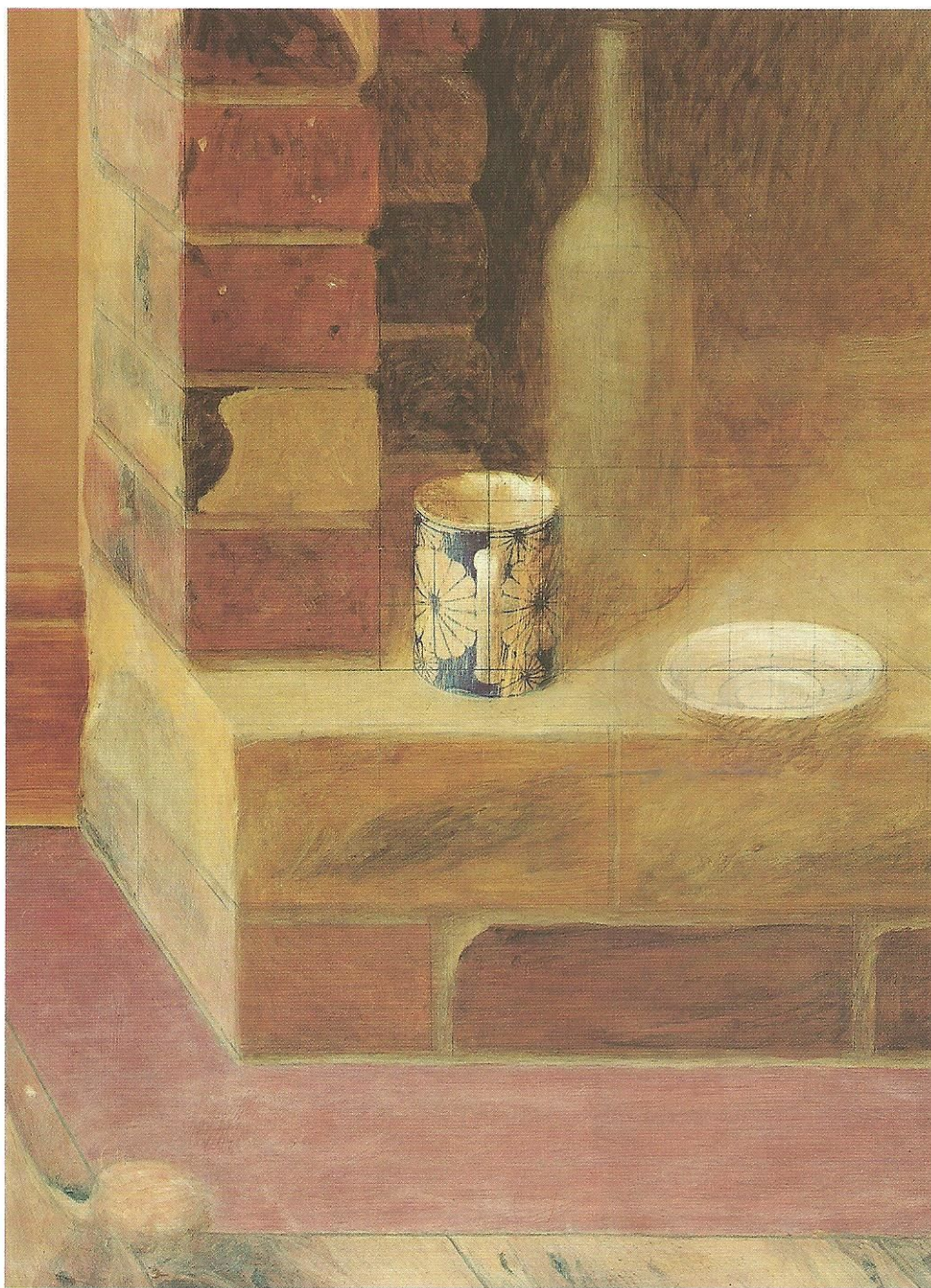


7. ANNE SUMMERS KNEELING AMONG BOOKS

egg tempera

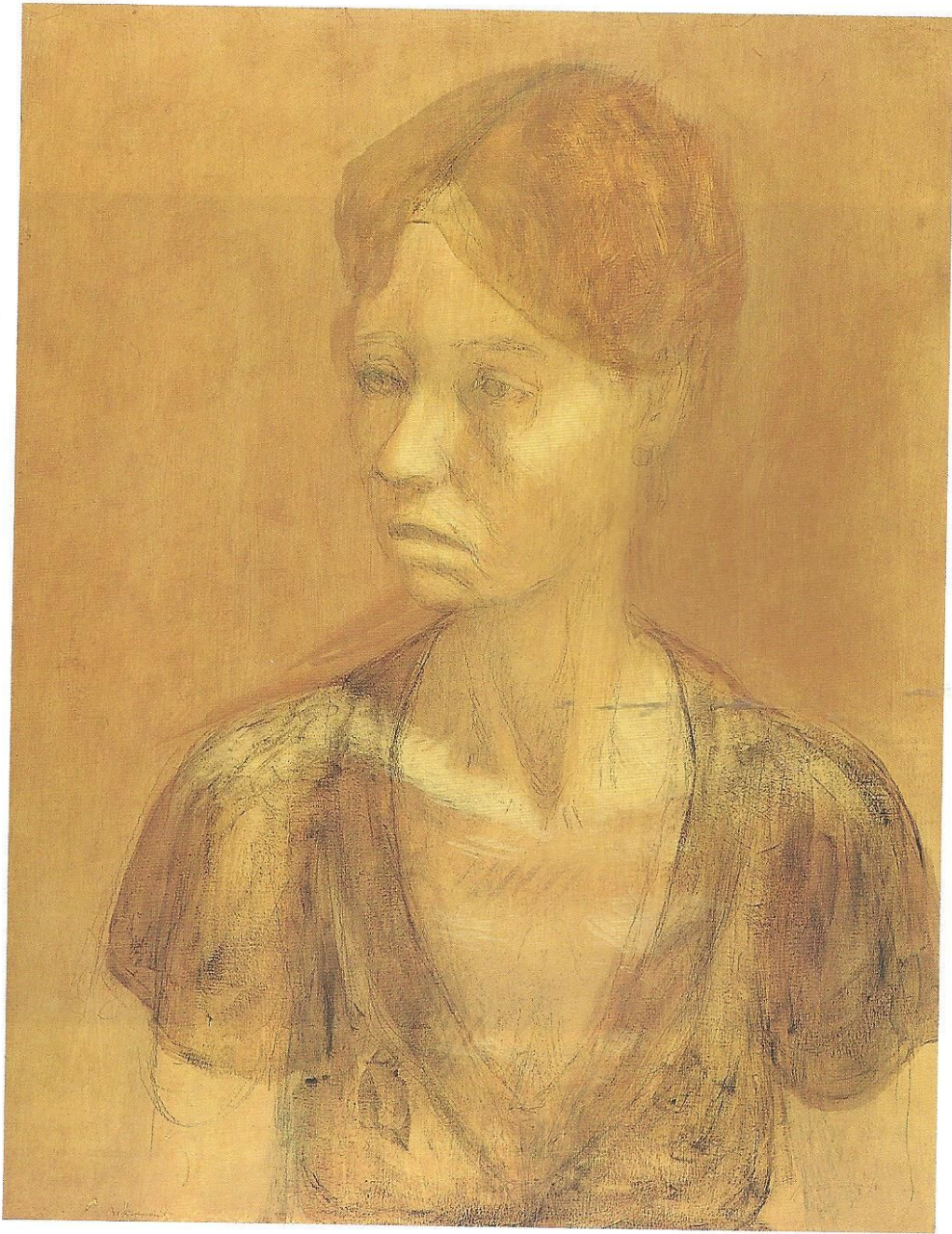
92.7 x 122cm

1998

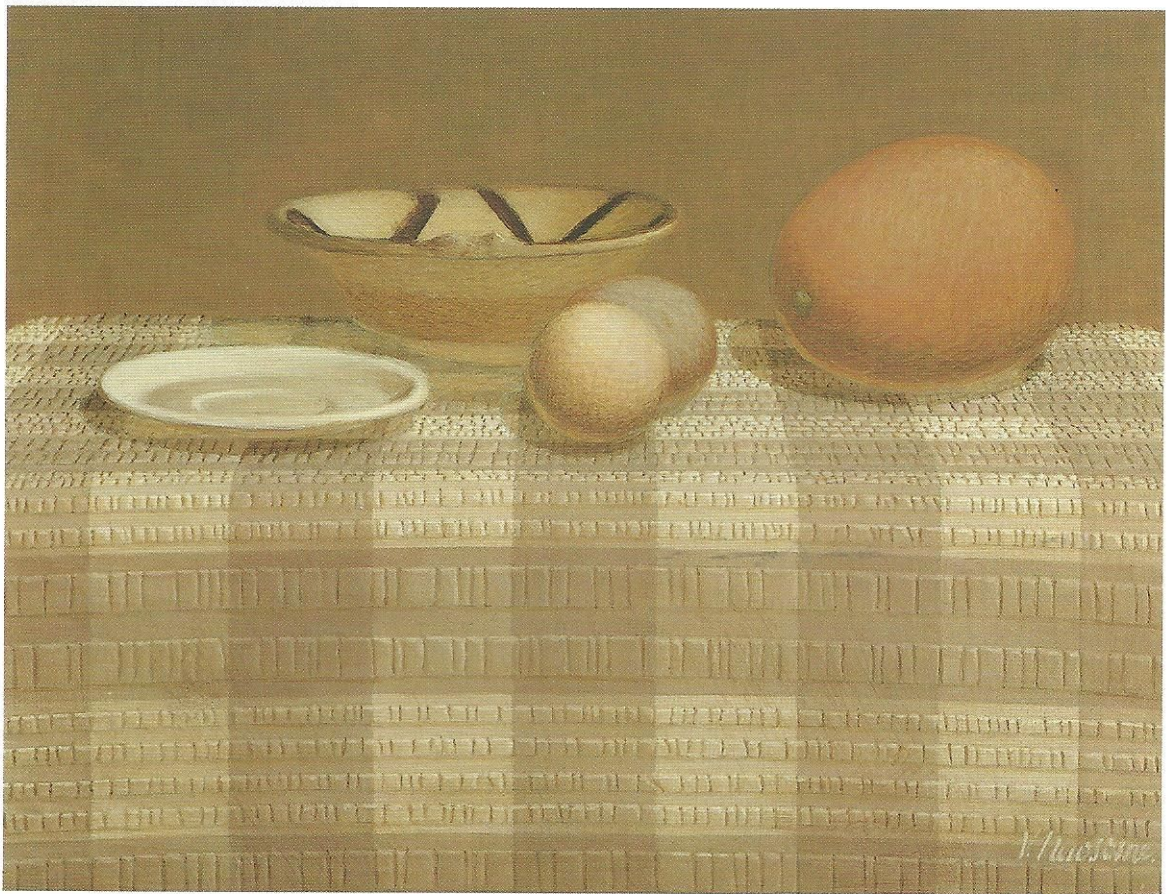


10. **STILL LIFE WITH A CHRYSANTHEMUM MUG,
BOTTLE AND SAUCER**

egg tempera
68.5 x 49.5cm
1998



15. **PORTRAIT OF MARIE CARR**
egg tempera
67 x 52cm
1998

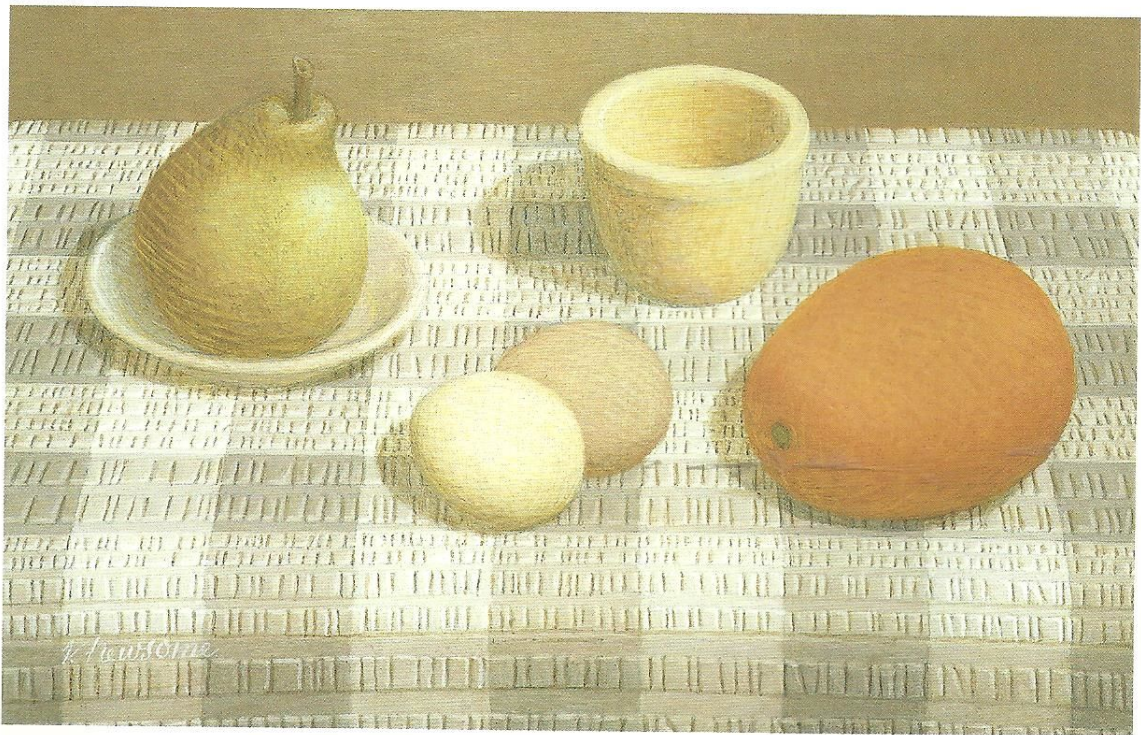


16. **STILL LIFE WITH BOWL, SAUCER, EGGS AND ORANGE**

egg tempera

29.8 x 40cm

1998



28. **STILL LIFE WITH EGGS, ORANGE, PEAR, BOWL AND SAUCER**

egg tempera

23.5 x 37cm

1997



31. **NUDE MODEL RELAXING**

egg tempera
90.2 x 120.7cm
1995



33. **MODEL SEEKING TOBACCO**

egg tempera
104 x 114cm
1997

Victor Newsome

b. 1935

- 1955-7 National service
- 1957-60 Studied painting at Leeds School of Art
- 1962-3 Taught at Leicester School of Art
- 1963-4 Taught painting & sculpture at Nottingham School of Art
- 1964-70 Taught painting & sculpture at Hull College of Art
- 1970-77 Taught at Camberwell, Goldsmiths, Brighton, Wimbledon & Chelsea

One-Man Exhibitions

- 1960 Awarded Prix de Rome
- 1966 Grabowski Gallery, London
Awarded Peter Stuyvesant Travel Bursary to America
Prizewinner 'Structure '66'
- 1976 Anthony D'Offay Gallery, London
- 1977 Joint 1st prizewinner 'Edinburgh Open 100'
- 1979 Hester van Royen Gallery, London
Ikon Gallery, Birmingham
- 1981 Anne Berthoud Gallery, London
Ferens Art Gallery, Hull
- 1987 Marlborough Fine Art, London

Selected Group Exhibitions

- 1962 'The Visual Adventure', Drian Gallery, London
- 1963 Camden Art Centre, London
Yorkshire House, Leeds
Leicester Museum
- 1964 Ferens Gallery, Hull
Grabowski Gallery, London
- 1965 Ferens Gallery, Hull
- 1966 Arts Council Welsh Committee, National Museum of Wales, Cardiff
Whitechapel Art Gallery, London
- 1967 University of Edinburgh
- 1968 Whitechapel Art Gallery, London
- 1969 Hayward Gallery, London
ICA Gallery, London
- 1973 Warehouse Gallery, London
- 1974 Arthur Tooth & Sons, London
Hayward Gallery, London
- 1975 Warehouse Gallery, London
- 1976 Warehouse Gallery, London
- 1977 'Industrial Sponsors Exhibition', London
- 1978 Warehouse Gallery, London
- 1979-80 British Council touring exhibition 'The British Art Show'
- 1981 Walker Art Gallery, Liverpool
- 1983 Marlborough Fine Art, London
- 1984 Marlborough Fine Art, London
- 1985 Canterbury College of Art touring exhibition 'British Artists in Italy 1920-1980'
- 1986-7 'The Foundation Veranneman Invites Marlborough' Kruishoutem, Belgium

A black and white photograph of a chair with a draped fabric, overlaid with a grid pattern. The chair is positioned in the center-right of the frame, with its back to the viewer. A large, light-colored fabric is draped over the chair's back and seat, creating deep folds and shadows. The background is a plain, light-colored wall. The floor is visible at the bottom, showing a dark surface. The grid pattern is a fine, light-colored grid that covers the entire image. In the bottom right corner, there is contact information for Grosvenor Gallery.

Grosvenor Gallery, 18 Albemarle Street, London W1X 3HA
Tel : 0171 629 0891 Fax : 0171 491 4391